

Front door

Front door handle Assembly overview

1. Door handle

- ◆ Remove door trim

=> General Body
Assembly, Interior:
Repair group 70

- ◆ Door sub-frame removed.
- ◆ Removal => Page 57-38.

2. Locking pin

- ◆ When installing, the hinged lever must fully engage in spring catch.

3. Front door

4. Seal for door handle

- ◆ Removing and installing => Fig.2

5. Door handle mount

- ◆ Releasing => Fig.1.

6. Connector

- ◆ Vehicles with anti-theft alarm only.

7. Door lock cover

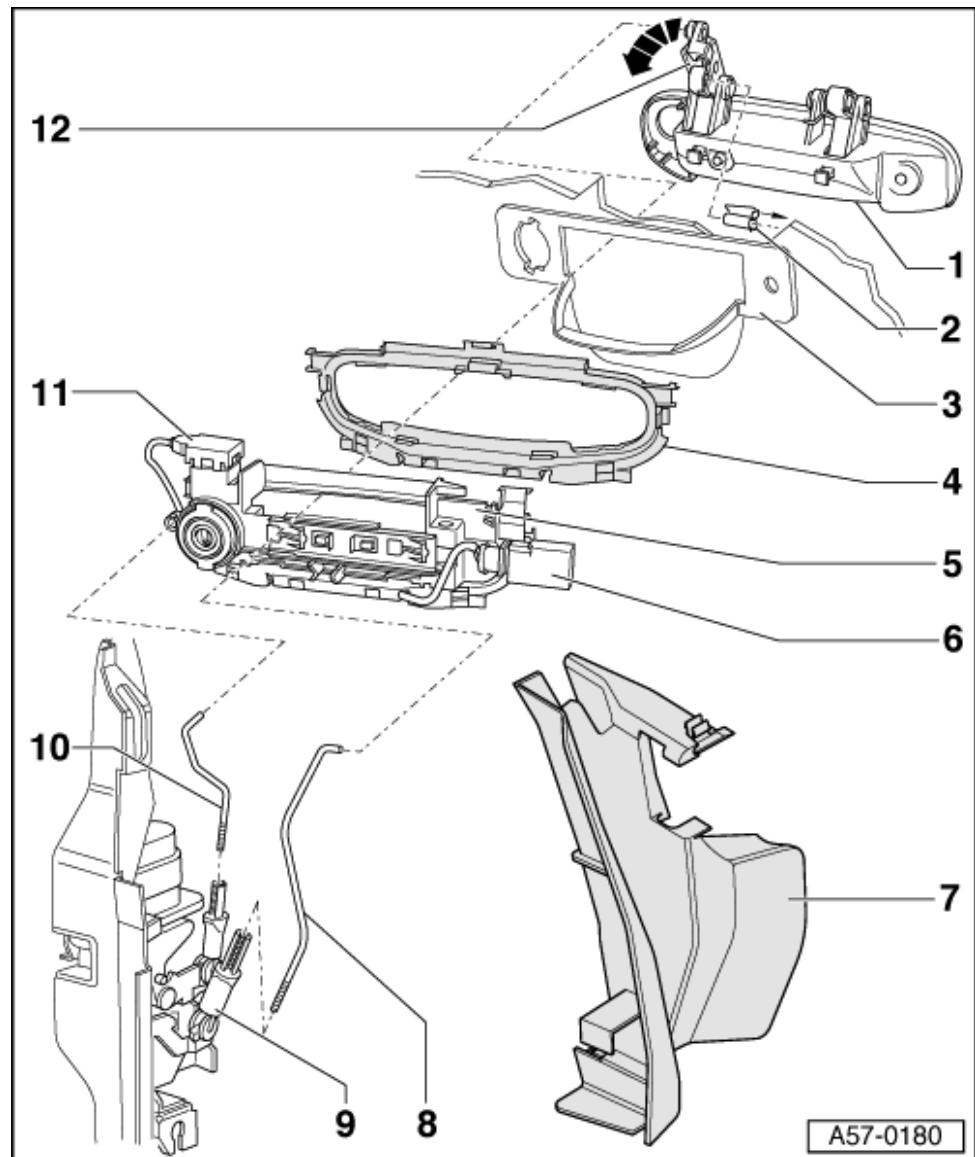
- ◆ To remove, first unclip at top, then remove from door lock to rear at bottom.

8. Operating rod

- ◆ Detach at clip -9- before removing door handle

9. Operating clip

- ◆ Installation => Page 57-33.



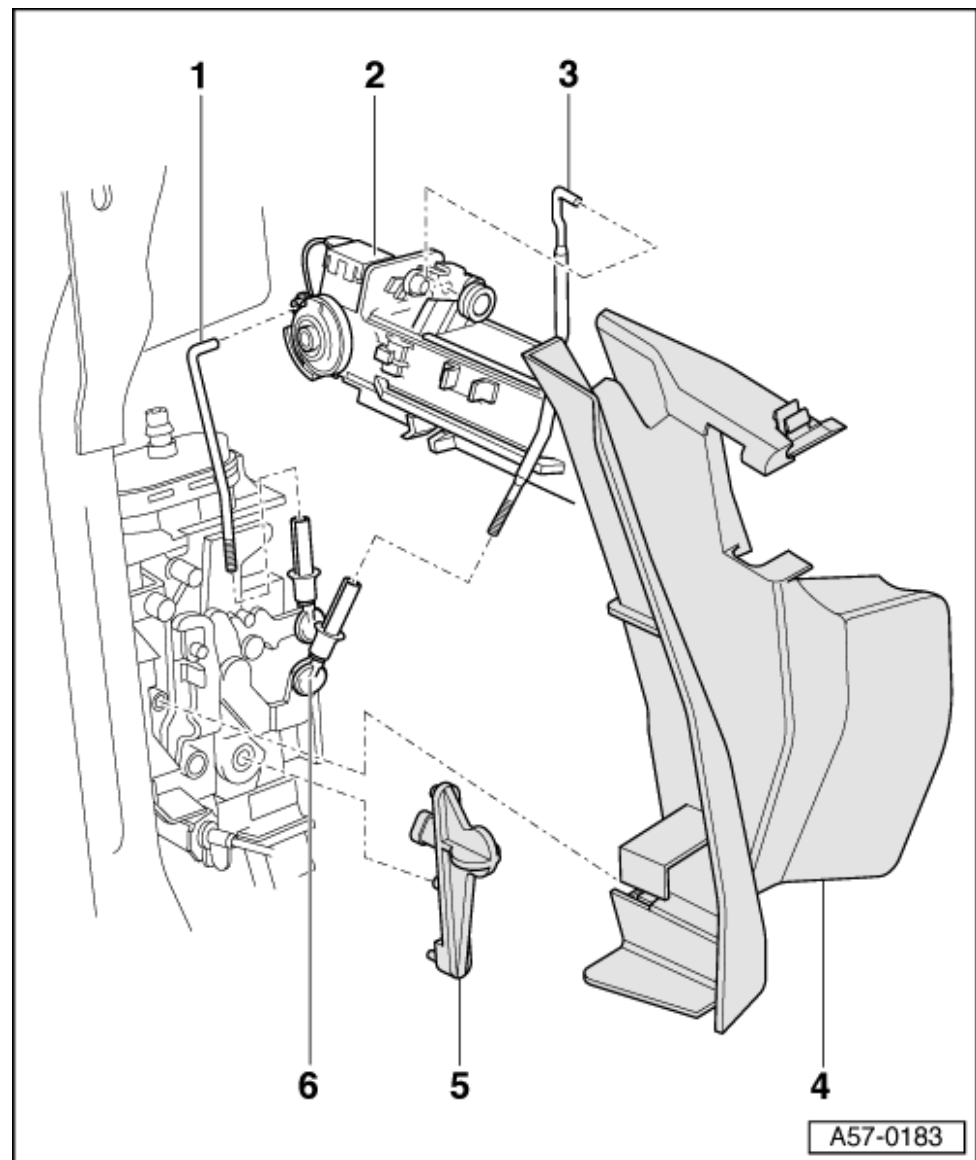
A57-0180

10. Lock cylinder securing rod

- ◆ Installation
=> Page 57-33

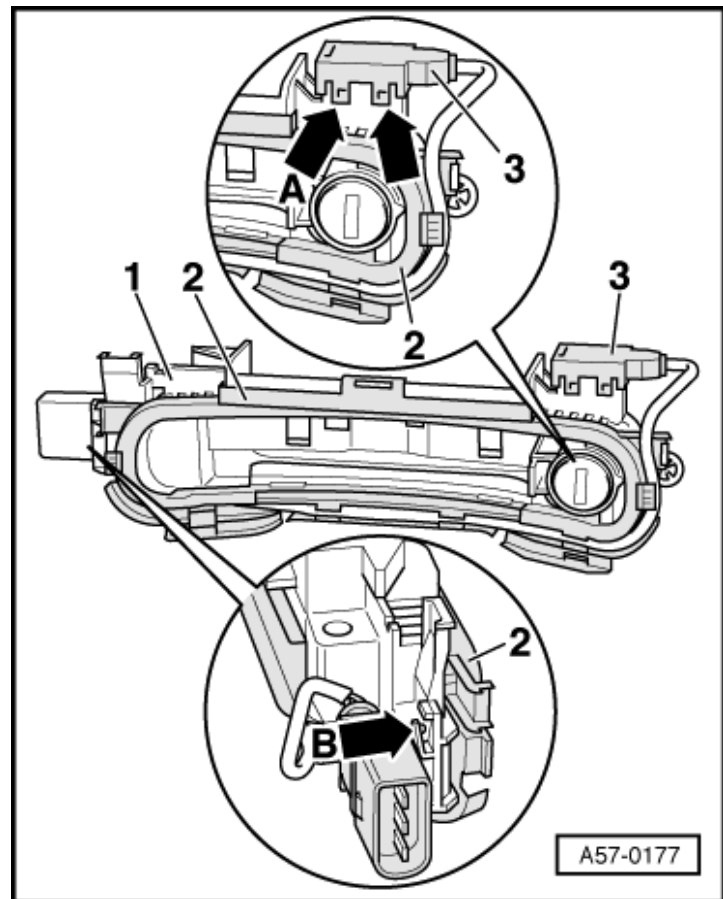
11. Microswitch

- ◆ Vehicles with anti-theft alarm only.
- ◆ Removing and installing
=> Fig. 1.

12. Hinged lever

→ Fig.1 Removing and installing microswitch

- Door handle mount -1- removed.
- Carefully release catches -arrows A- and detach microswitch -3- upwards.
- Push catch -arrow B- back and remove connector from mount by pushing upwards.
- Remove connector cable from seal -2-.
- Ensure when installing that the cable is fully inserted into seal as shown.



→ **Fig.2 Removing and installing door handle seal**

- Unclip and detach seal to remove.
- When installing, the seal must engage fully in mount -arrow- to guarantee absence of leaks.

