

Servicing windscreen washer system

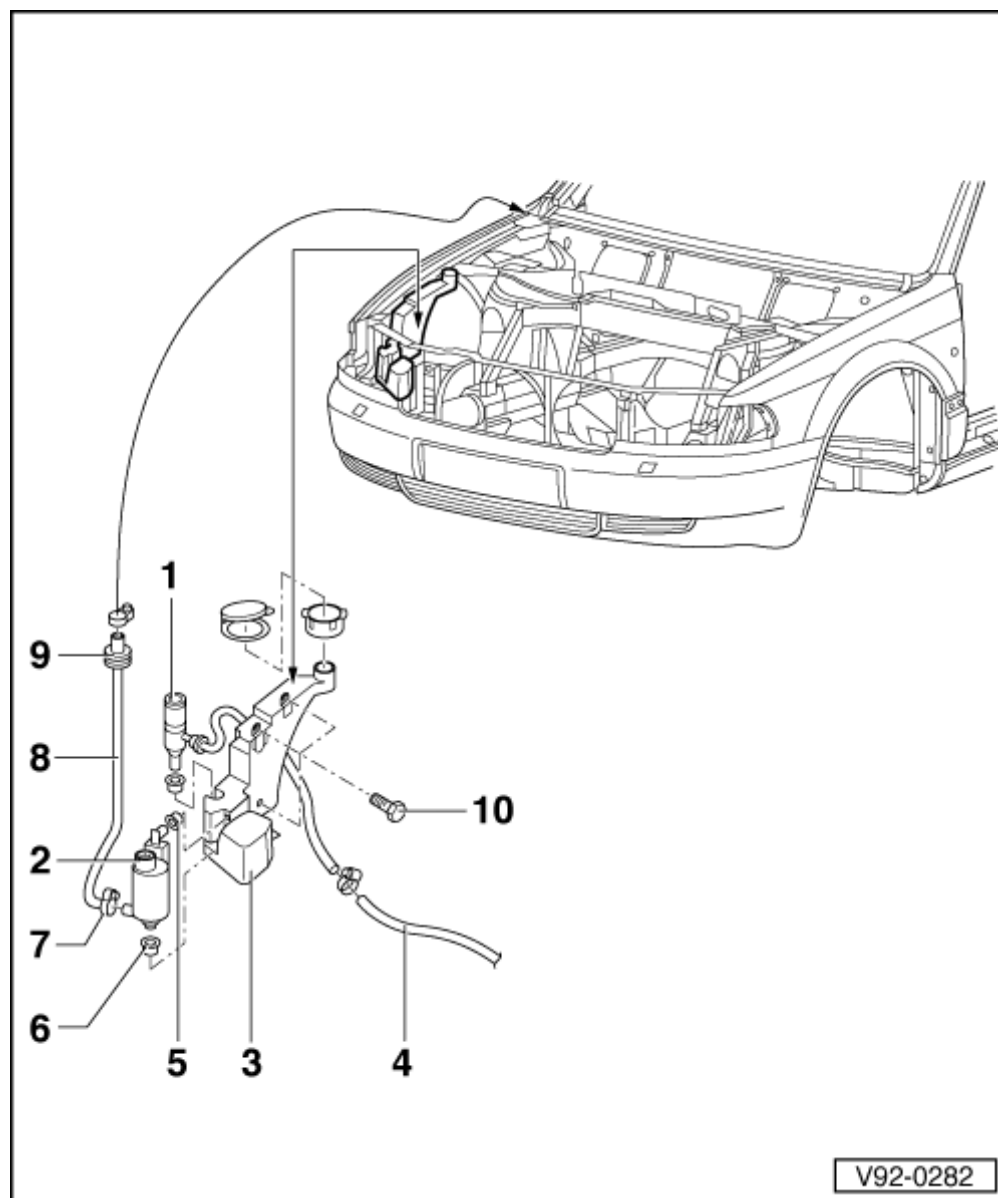
Removing and installing washer fluid container

Note:

The washer fluid container at front right of the engine compartment supplies water for both windscreen washer system and headlamp washer system.

Removing:

- – Remove cover over air cleaner in engine compartment and then remove air cleaner.
- – Unscrew securing bolts -10- (3 x 10 mm A/F) - 5 Nm.



- – Detach hose connections and electrical connections at pumps -1 and 2-.
- – Remove washer fluid container -3- from engine compartment.

Installing:

- – Install in reverse sequence to

removal.

