

Servicing headlights

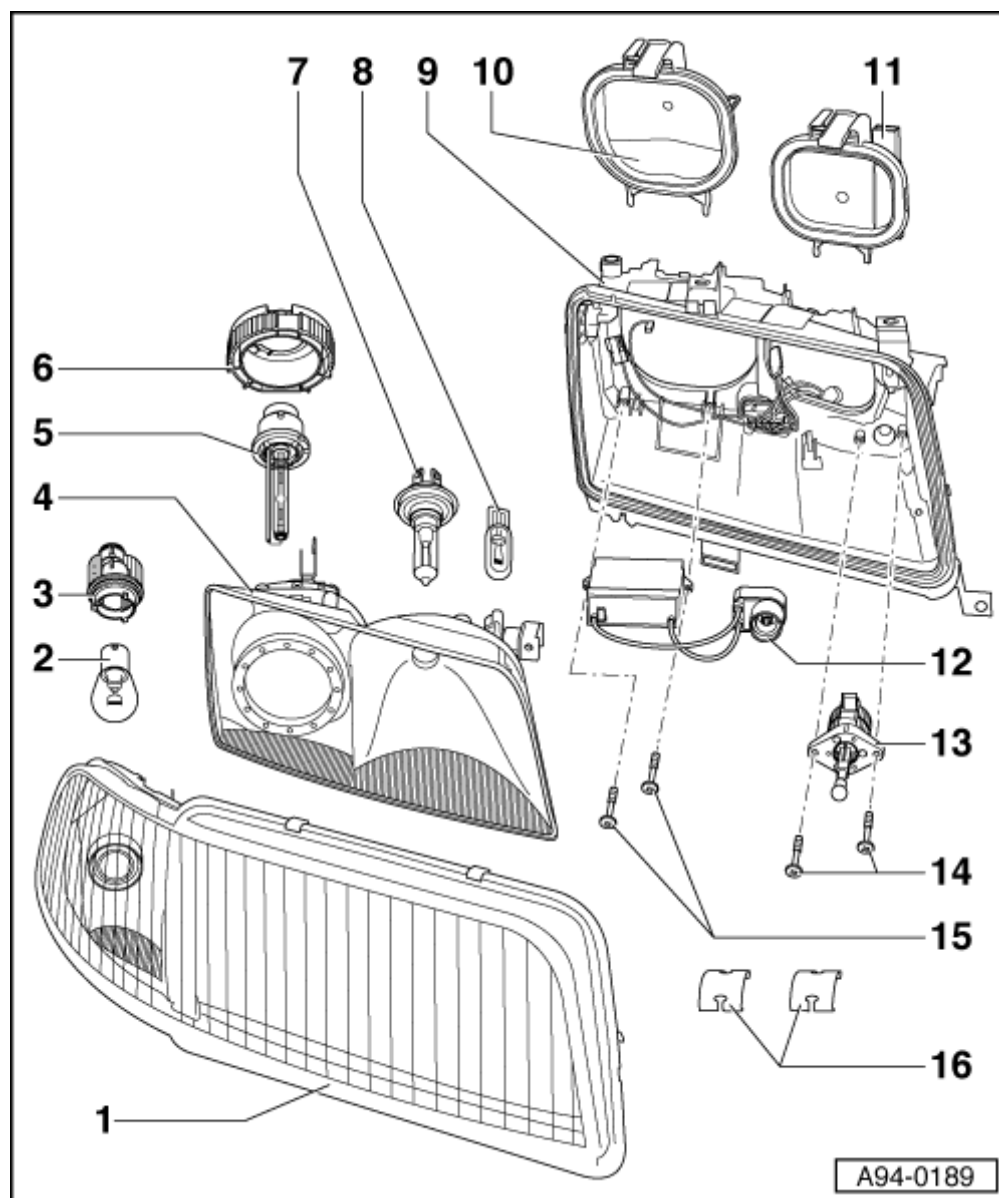
Removing and installing gas-discharge lamp starter unit -N195

Warning - High voltage!

Always disconnect the battery earth strap before working on parts of the gas-discharge headlights marked with yellow high-voltage warning symbols.

Removing

- - Remove headlight =>Page [94-9](#).
- - Detach rubber seal, this involves releasing retaining clip and securing elements.
- - Detach lens -1- by releasing the six fasteners -16-.



- - Remove reflector -4-. Turn screws for height/lateral adjustment until reflector can be taken out.
- - Open housing cover -10- and detach connector at gas discharge lamp by turning it

anti-
clockwise.

- – Unfasten the two screws -15- and take out gas discharge lamp starter unit -12-.

Installing

- – Installation is performed in the reverse sequence.
- – After installing perform headlight adjustment => Page [94-12](#).

