

Poly V-belt drive - exploded view



Note

- ◆ Before removing the poly V-belt, mark the direction of rotation with chalk or a felt pen. If the belt runs in the opposite direction when it is refitted, this can cause breakage.
- ◆ Check that the belt runs properly on the pulleys when installing.

1 - Poly V-belt

- Removing and installing
→ Chapter

2 - 22 Nm

3 - 45 Nm

4 - Alternator

- Removing and installing
→ Rep.
Gr.27

5 - 43 Nm

6 - 10 Nm

7 - Idler roller (top)

- For poly V-belt

8 - Bearing

- For idler roller
- Note installation position: Snug fit on bracket for torque reaction support

9 - 22 Nm

- Apply locking fluid when fitting
- Locking fluid → Parts catalogue

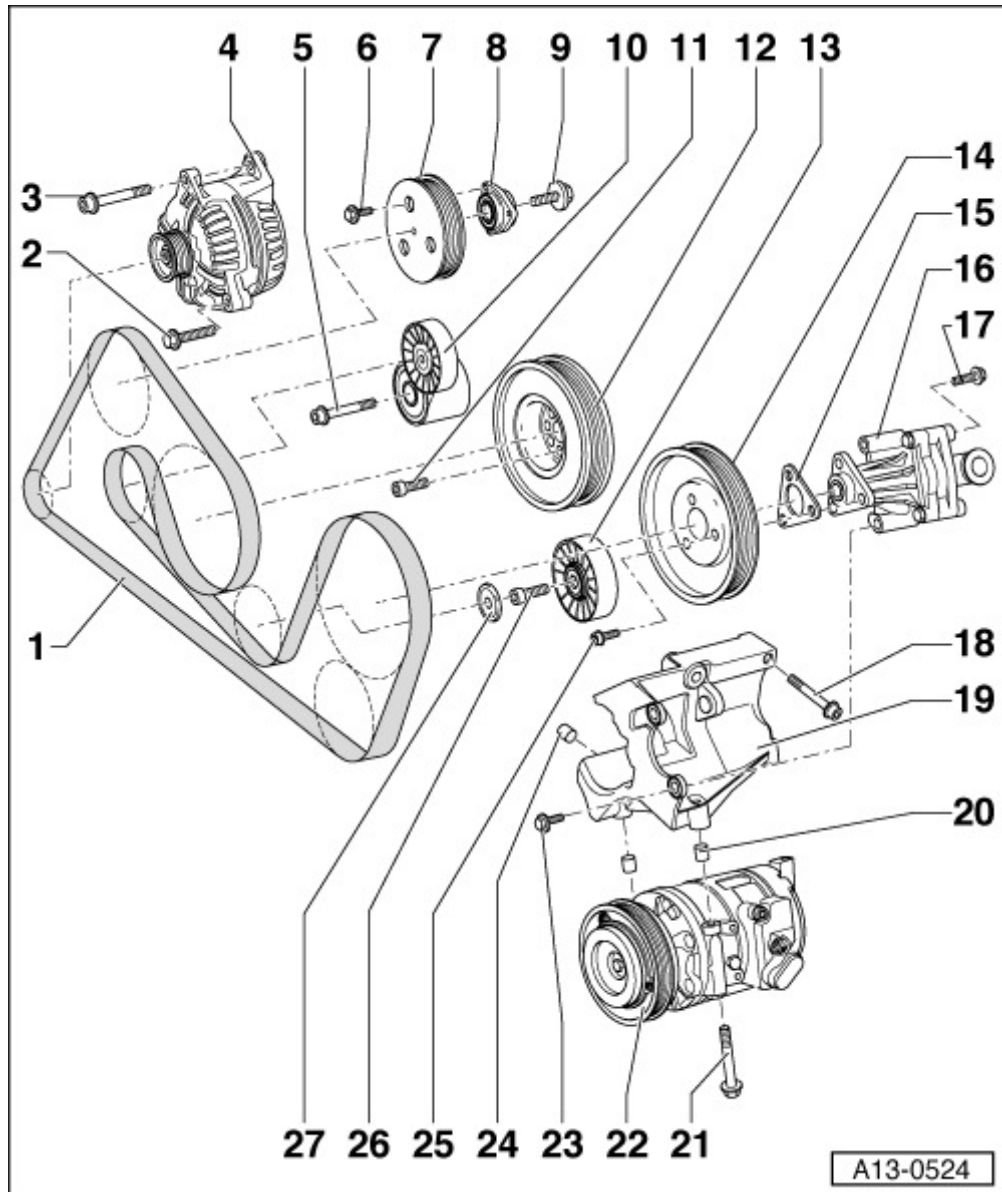
10 - Tensioner for poly V-belt

- Pivot with ring spanner to slacken poly V-belt → Chapter

11 - 22 Nm

12 - Vibration damper

- With pulley for poly V-belt



- ❑ Removing and installing
→ Chapter

13 - Idler roller (bottom)

- ❑ For poly V-belt

14 - Pulley

- ❑ For power steering pump
- ❑ Removing and installing → Fig.

15 - Shim

- ❑ Different thicknesses
- ❑ After renewing the power steering pump, the AC compressor or the bracket for power steering pump and AC compressor, determine thickness ⇒ and check alignment of poly V-belt
→ Chapter

16 - Power steering pump

- ❑ For power steering
- ❑ Removing and installing → Rep. Gr.48

17 - 22 Nm**18 - 40 Nm****19 - Bracket**

- ❑ For AC compressor and power steering pump
- ❑ Pay attention to dowel sleeves → Item when installing

20 - Dowel sleeve

- ❑ 2x
- ❑ Check for correct seating in bracket

21 - 22 Nm**22 - Air conditioner compressor**

- ❑ Pay attention to dowel sleeves → Item when installing

23 - 22 Nm**24 - Dowel sleeve**

- ❑ 2x
- ❑ Check for correct seating

25 - 22 Nm**26 - 23 Nm****27 - Cover**

- ❑ For idler roller

Removing and installing power steering pump pulley.

- Lock carrier in service position → Rep. Gr.50.
- Poly V-belt must be removed
→ Chapter.

- Use pin wrench -3212- to counterhold when slackening and tightening bolts - arrows-.
- ♦ Installation position: marking “vorne” (front) faces in direction of travel.
- ♦ Check alignment of poly V-belt
→ [Chapter](#).

