

Front door trims

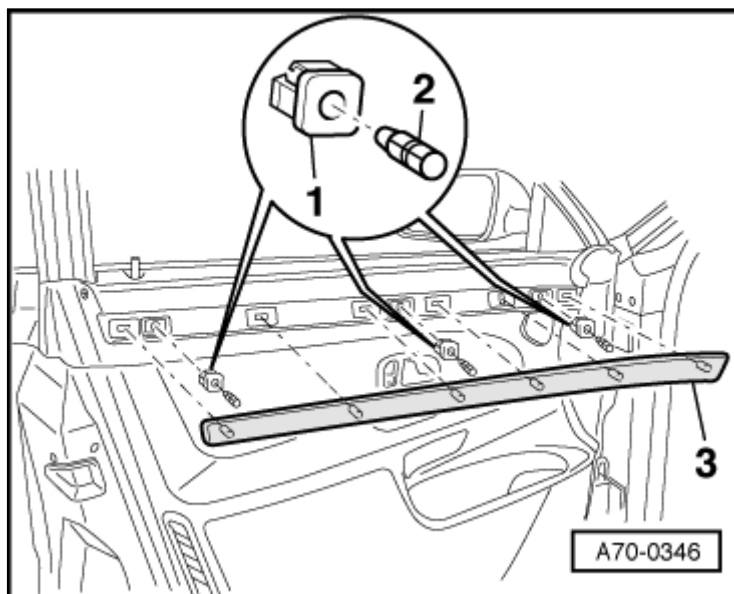
Removing and installing front door trim

Removing

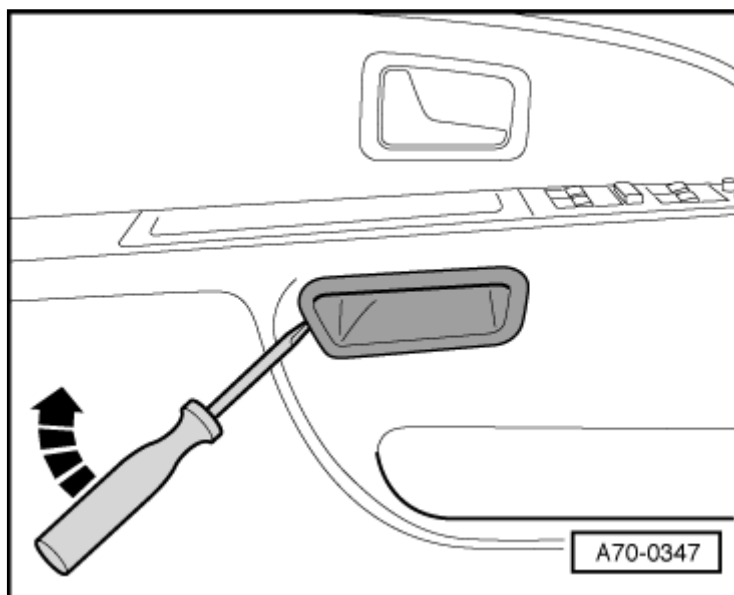
- Carefully lever cover strip -3- out of fasteners at door trim.
- Press pin -1- on expanding clips -2- in by about 4 mm and detach expanding clips.

Notes:

- Do not press pins completely out to remove door trim.
- Depending on date of manufacture cross-head screws may be fitted instead of expanding clips



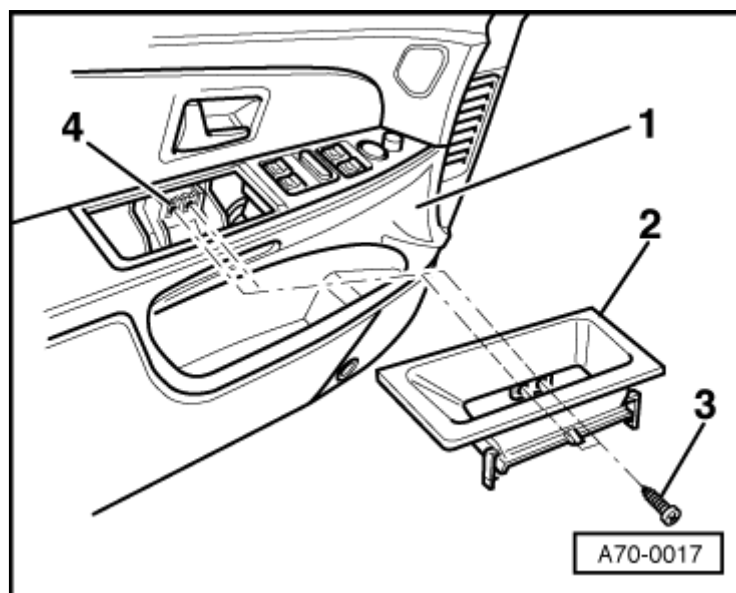
- Use blunt screwdriver to lever off bottom part of recessed handle moulding -arrow-.
- Take bottom part of recessed handle moulding out of door trim.



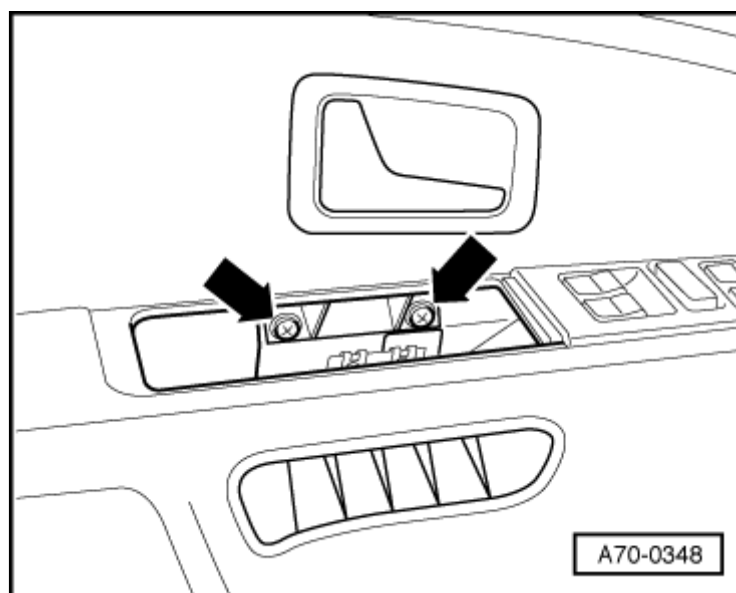
- Screw out bolts -3- for top part of recessed handle moulding -2-.
- Lift top part of recessed handle moulding out of door trim -1-.

Note:

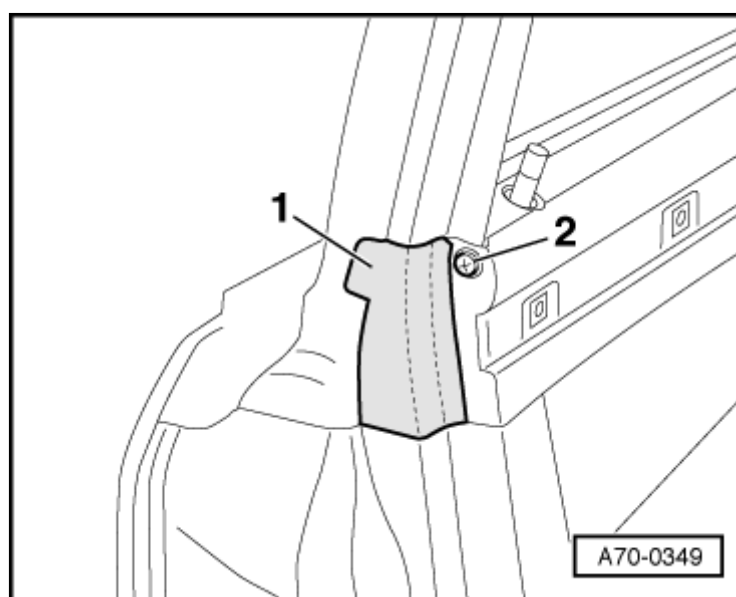
With one-piece top part of recessed handle moulding front section of top part (with switches) has to be additionally unclipped from door trim and connector detached.



- → Remove cross-head screws - arrows-.



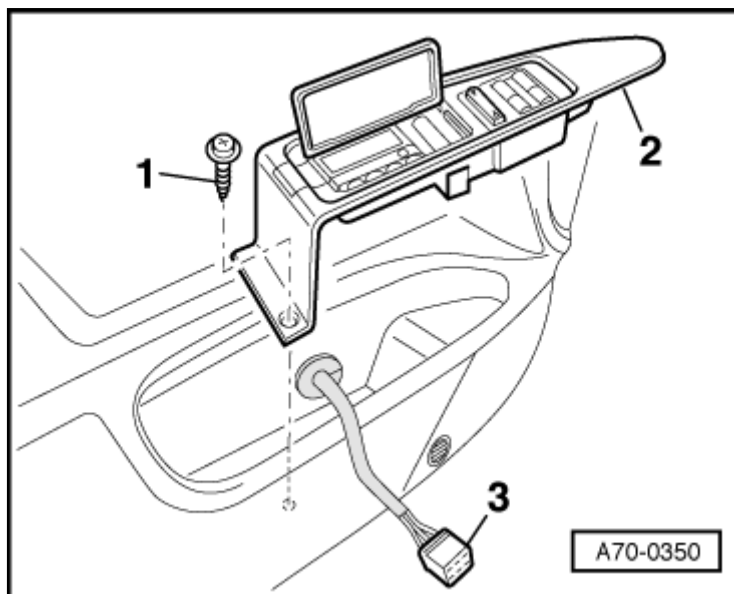
- → Screw out cross-head screw -2-.
- Detach bonding of rear filler piece -1- at window frame.



- → On vehicles with memory function

and/or auxiliary heater, screw out cross-head screw -1- of switch mount -2- at door trim.

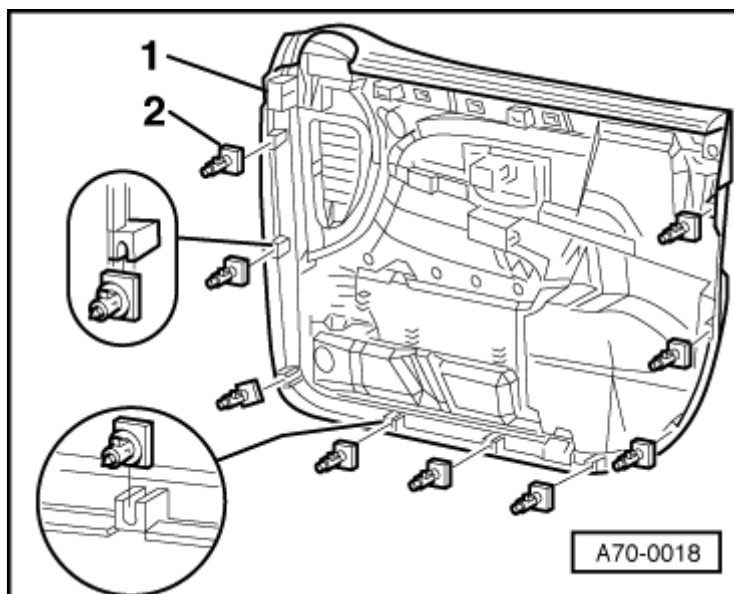
- Take out switch mount and detach connectors -3-.



- → Unclip door trim -1- from carrier for door components.

2 - Retaining clips for door trim

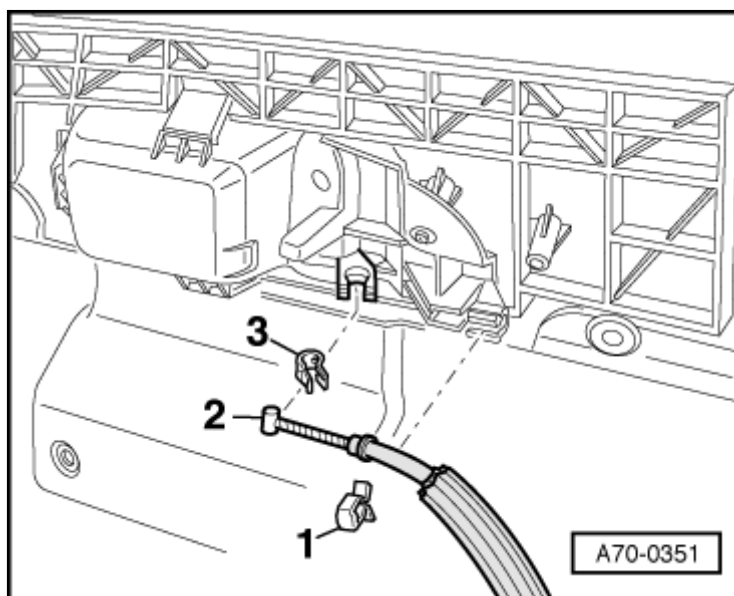
- Lift out door trim over locking knob.
- Tilt door trim and unplug connector from driver's inside locking mechanism switch.



- → Prise clip -1- off Bowden cable -2- of door opener.
- Detach nipple of Bowden cable with retaining clip -3- at door opener.

Note:

Take care not to lose Bowden cable retaining clip.



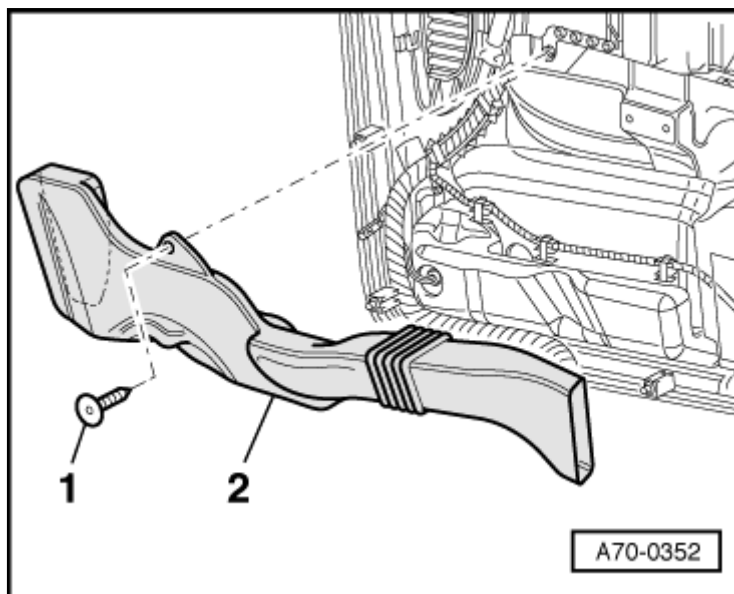
- → Unfasten clip -1- of air duct -2- at

door trim.

- Detach all connectors of wiring harness in door trim.
- Detach wiring harness fasteners.

Installing

Installation is carried out in the reverse order; note the following:



- → Ensure that all retaining clips -2- engage properly in carrier for door components.

