

## **Audi > A8/A8L > 2004-2008**

### **Body Interior**

### **72 - Removal and Installation**

.

## **Power Memory Front Seats**

- ⇒ [Seat](#)
- ⇒ [Front Seat Rail Cover](#)
- ⇒ [Rear Seat Rail Cover](#)
- ⇒ [Front Passenger Seat Stop](#)
- ⇒ [Front Backrest](#)
- ⇒ [Seat Pan](#)
- ⇒ [Side Trim, Sill Side](#)
- ⇒ [Side Trim, Tunnel Side](#)
- ⇒ [Front Trim](#)
- ⇒ [Seat Side Trim Bracket](#)
- ⇒ [Seat Adjustment Switch](#)
- ⇒ [Four-Way Lumbar Support Switch](#)
- ⇒ [Memory Seat/Steering Column Adjustment Control Module and Passenger Memory Seat Control Module](#)
- ⇒ [Connector Station](#)
- ⇒ [Seat with Faulty Forward/Back Adjustment Motor](#)
- ⇒ [Seat Lower Frame with Forward/Back Adjustment Motor](#)
- ⇒ [Seat Upper Frame](#)
- ⇒ [Seat Pan](#)
- ⇒ [Safety Ground Lock](#)

- ⇒ [Seat Height Adjustment Motor](#)
- ⇒ [Seat Angle Adjustment Motor](#)
- ⇒ [Seat Cushion Extension Motor](#)
- ⇒ [Backrest Adjustment Motor](#)
- ⇒ [Upper Backrest Cover](#)
- ⇒ [Lower Backrest Cover](#)
- ⇒ [Four-Way Lumbar Support](#)
- ⇒ [Lumbar Support Adjustment Motor](#)
- ⇒ [Headrest Adjustment Motor](#)
- ⇒ [Upper Backrest Adjustment Motor](#)
- ⇒ [Power Headrest](#)
- ⇒ [Headrest Adjustment Motor with Active Headrest Unit](#)
- ⇒ [Seat Pan Ventilation](#)
- ⇒ [Backrest Ventilation](#)
- ⇒ [Rear Footwell Lighting](#)
- ⇒ [Power Front Seat Wiring](#)

•

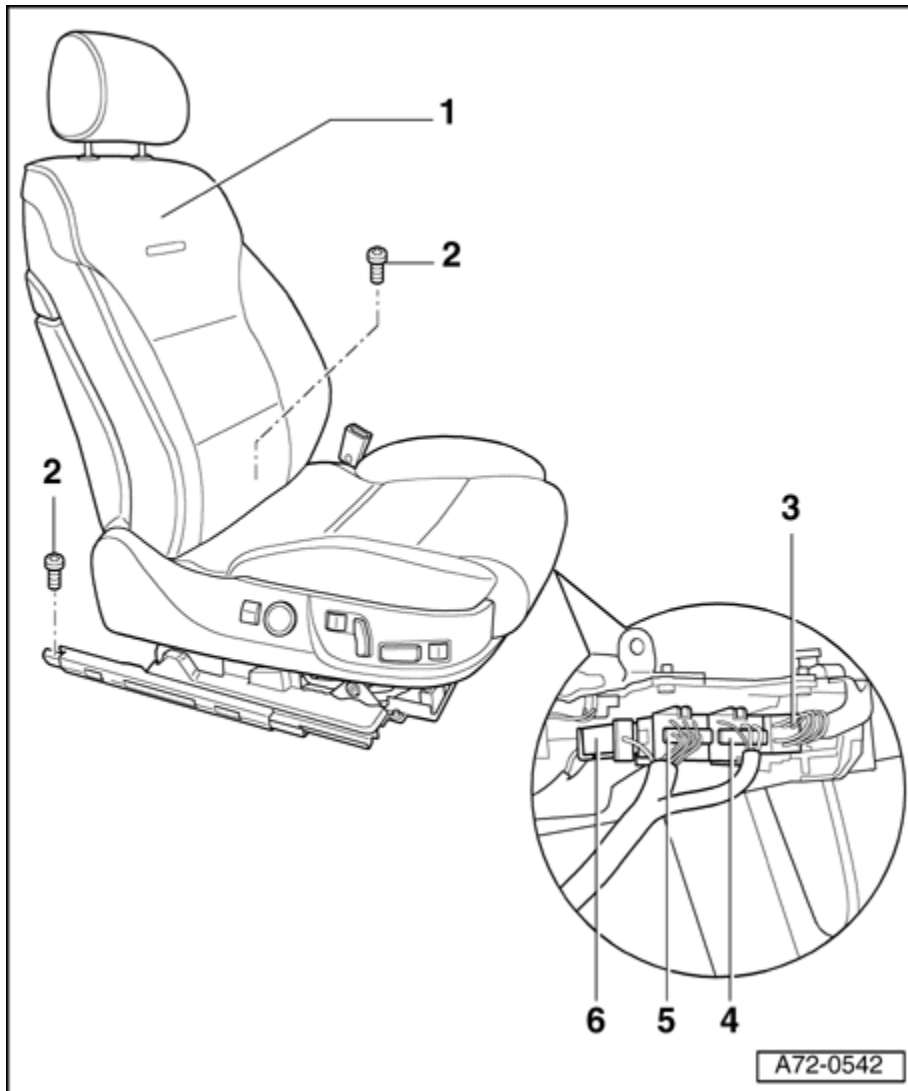
## Seat

### Note:

- ♦ *Before disconnecting battery: Obtain radio code.*
- ♦ *To remove the drivers seat: Move steering wheel all the way forward and up.*
- ♦ *If backrest covers are to be removed on the comfort seat, move backrest head adjustment forward.*
- ♦ *Move height adjustment and seat angle adjustment completely up and backrest to a 90 degree position.*

**CAUTION!**

**On vehicles equipped with Audi Telematics by OnStar, switch-off emergency (back-up) battery for Telematic/Telephone Control Module prior to disconnecting vehicle battery. Switch-on emergency (back-up) battery after reconnecting vehicle battery ⇒ Communication - Repair Group 91**

**1 - Front seat****♦ Removing**

- Remove anchorage point for outer floor assembly ⇒ [Outside Floor Assembly Anchorage Point](#) .

- Guide belt strap out of side panel.
- Remove front seat rail covers ⇒ [Front Seat Rail Cover](#) .
- Remove rear seat rail covers ⇒ [Rear Seat Rail Cover](#) .
- Push front seat - **1** - fully upward and to the rear.
- Remove rear bolts - **2** - (Qty. 2).
- Move seat forward.
- Remove front bolts - **2** - (Qty. 2).

**CAUTION!**

**Before removing seat: Disconnect the battery ground strap.**

- Tip front seat - **1** - back.

**Note:**

- ♦ Before disconnecting the ignition and ground wiring, discharge static electricity by touching the door striker pin.

**Note:**

- Disconnect airbag connector - **6** - ⇒ [Side Airbag, Disconnecting](#) .
- Disconnect power supply connector - **5** - .
- Disconnect seat heater connector - **4** - .
- Connect airbag adapter ⇒ [Airbag Adapter VAS 6229, Connecting](#) .
- With help from a second mechanic, lift front seat - **1** - out of vehicle.

♦ Installing

- Installation is reverse of removal.
- USA vehicles: make sure bump stop is fitted at front passengers seat ⇒ [Front Passenger Seat Stop](#) .

- Switch on ignition.

**CAUTION!**

**No one should be in vehicle when connecting battery.**

- Connect battery ground strap.

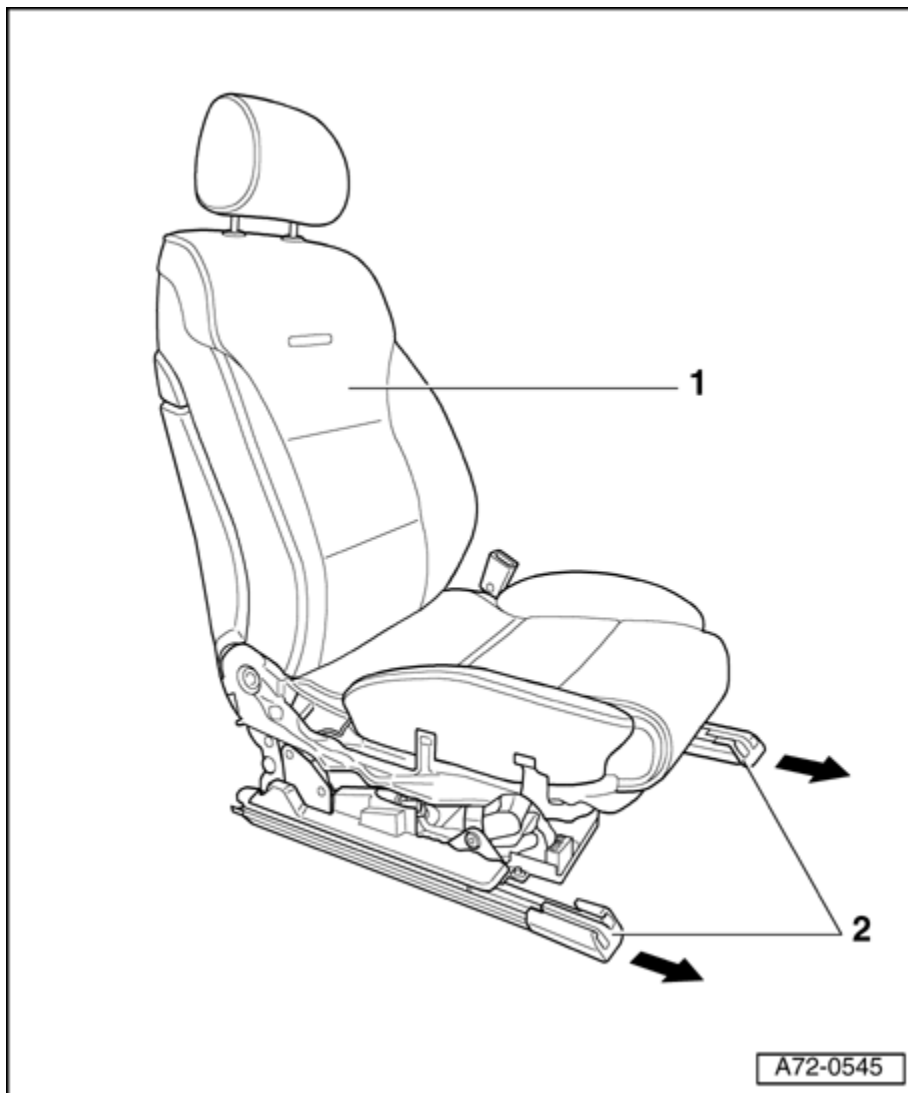
**2 - Screws (Qty. 4)**

- ♦ Tightening torque: 40 Nm

**3 - Connector (black) for the seat forward/back adjustment motor, seat height adjustment motor and seat angle adjustment motor emergency power supply****4 - Connector for heated seat (gray)****5 - Current supply connector (red)****6 - Connector for airbag (yellow)**

▪

**Front Seat Rail Cover**

**1 - Front seat****2 - Seat rail covers (Qty. 2)****♦ Removing**

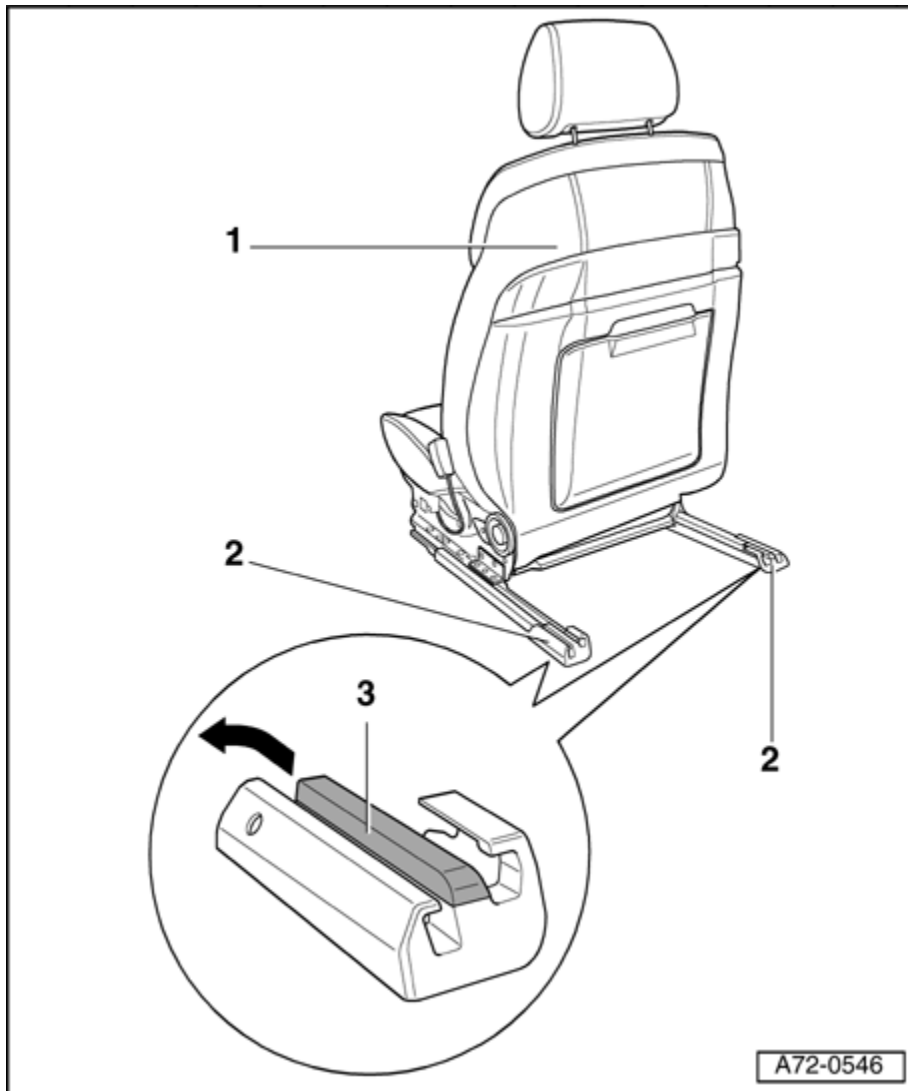
- Move front seat - **1** - fully to the rear.
- Pull off seat rail covers - **2** - (Qty. 2) in direction of arrow.

**♦ Installing**

- Installation is reverse of removal.

.

**Rear Seat Rail Cover**

**1 - Front seat****2 - Seat rail covers (Qty. 2)****♦ Removing**

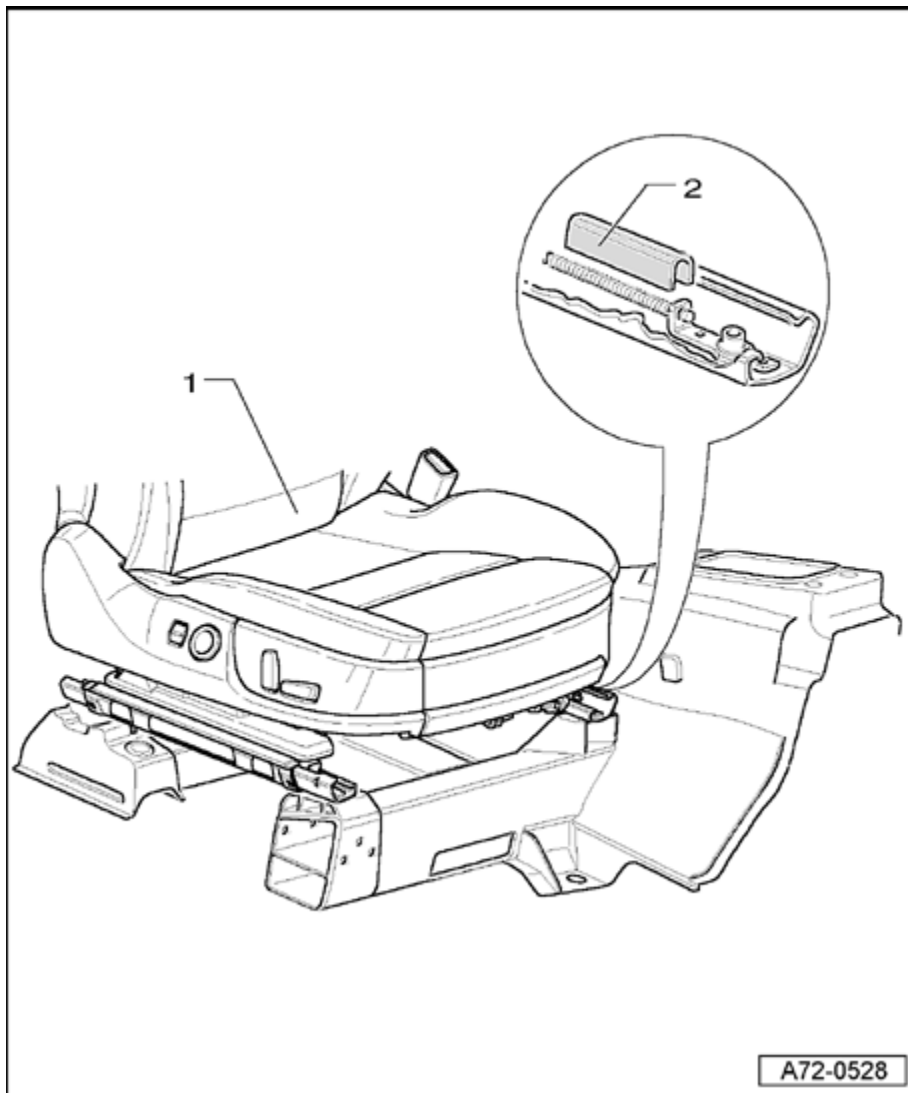
- Move front seat - **1** - fully to the front.
- Lift retaining tabs - **3** - in direction of arrow and pull off seat rail cover - **2** - .

**♦ Installing**

- Installation is reverse of removal.

**3 - Retaining tabs (Qty. 2)**

## Front Passenger Seat Stop



**1 - Front passengers seat**

**2 - Stop**

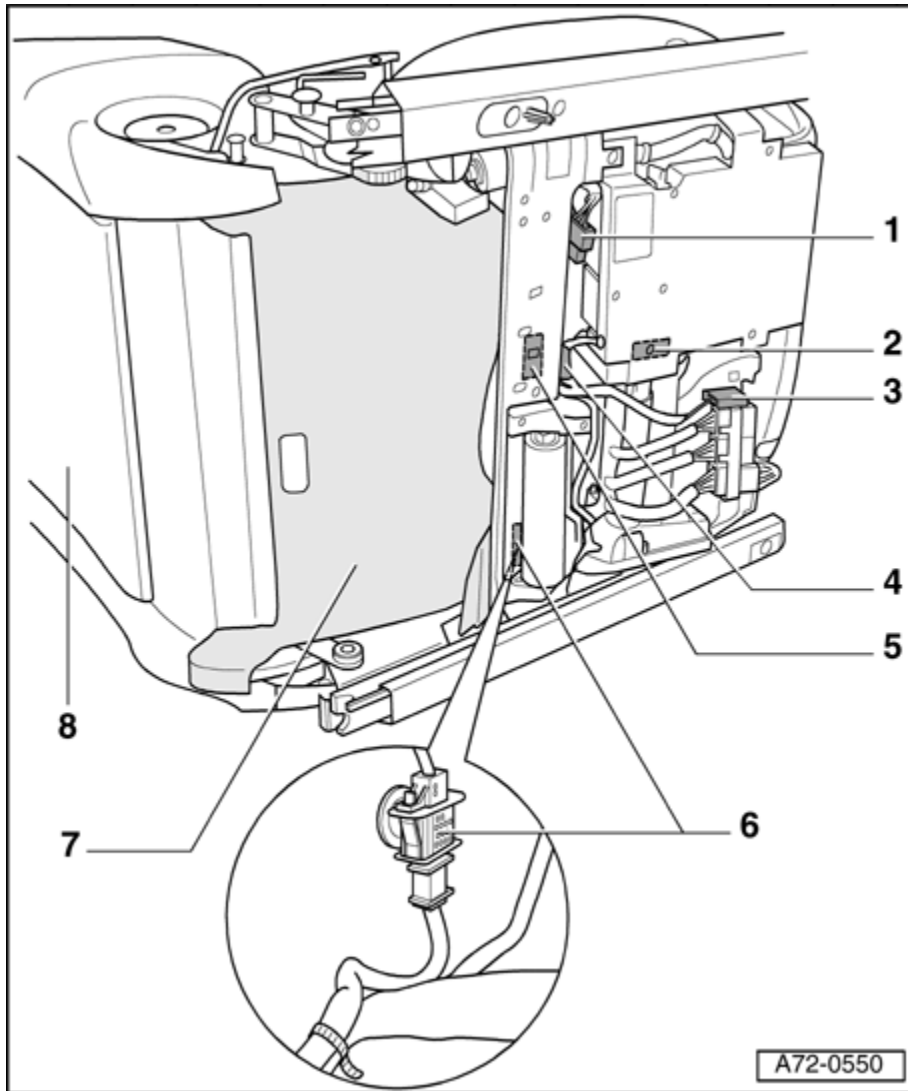
- ◆ USA only
- ◆ Installed for front passengers seat on tunnel side

## Front Backrest

**CAUTION!**



**Observe safety precautions for working on airbags** ⇒ [Airbag Safety Precautions](#) .



**1 - Connector**

**2 - Connector**

**3 - Harness connector of side airbag**

**4 - Clip**

**5 - Connector**

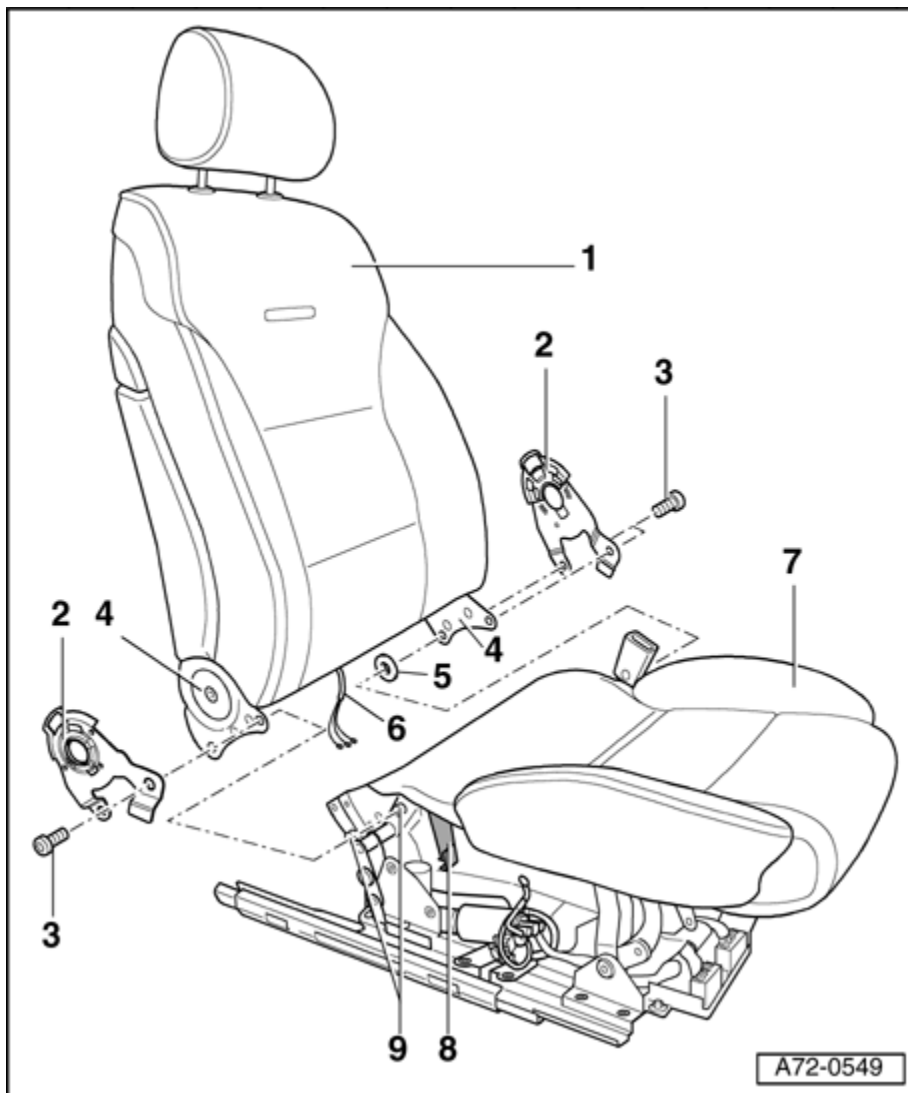
**6 - Connector**

## 7 - Protective mat

## 8 - Front backrest

### ♦ Removing

- Remove seat ⇒ [Seat](#) .
- Mount the fixture for seat repair VAS 6136 on the engine and transmission holder VAS 6095 .
- Attach the front seat to the fixture for seat repair VAS 6136 .
- Remove side trim on sill side ⇒ [Side Trim, Sill Side](#) .
- Remove side trim on tunnel side ⇒ [Side Trim, Tunnel Side](#) .
- Remove front trim ⇒ [Front Trim](#) .
- Remove bracket for seat side panels ⇒ [Seat Side Trim Bracket](#) .
- Pull off protective mat - **7** - .
- Disconnect connector - **6** - .
- Unclip harness connector - **5** - and disconnect harness connector - **5** - .
- Disengage cable harness at clip - **4** - .
- Disconnect connector - **1** - .
- Unclip harness connector - **2** - and disconnect harness connector - **2** - .
- Remove connector - **3** - .



### 1 - Backrest

- Disengage clamping strips - **8** - (Qty. 2).
- Remove bolts - **3** - (Qty. 4).
- Remove mounting trim panels - **2** - (Qty. 2).
- Pry off backrest mounting brackets - **4** - (Qty. 2) on guides - **9** - (Qty. 4).
- Tip backrest - **1** - forward on seat.
- Push cushion aside and carefully disconnect wiring harness - **2** - from seat pan - **8** - .
- Remove backrest - **1** - .

### ♦ Installing

- Position spacer - **5** - on tunnel side onto lower guide - **9** - so that the spacer stands flush with guide - **9** - .
- Always replace bolts - **3** - (Qty. 4).
- Cut threads in backrest frame before installing screws - **3** - (Qty. 4).
- Continue to install backrest - **1** - in reverse order of removal.
- For seats with seat memory: Perform a basic setting for backrest or seat after installing seat in vehicle.

## **2 - Anchor trim (Qty. 2)**

## **3 - Screws (Qty. 4)**

- ♦ Tightening torque: 34 Nm

## **4 - Backrest hinges (Qty. 2)**

## **5 - Spacer, tunnel side only**

## **6 - Cable harness**

## **7 - Seat pan**

## **8 - Fastening strips (Qty. 2)**

## **9 - Guides (Qty. 4)**

.

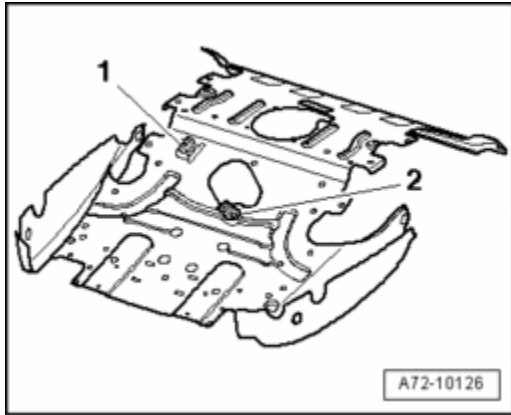
## **Seat Pan**

### **Note:**

- ♦ *The seat pan as genuine replacement part is supplied with a retaining clip and angle bracket for passenger occupant detection system for front passengers airbag deactivation (country versions). On vehicles without passenger occupant detection system for front passengers airbag deactivation (country versions), the components must be removed.*

### **Note:**

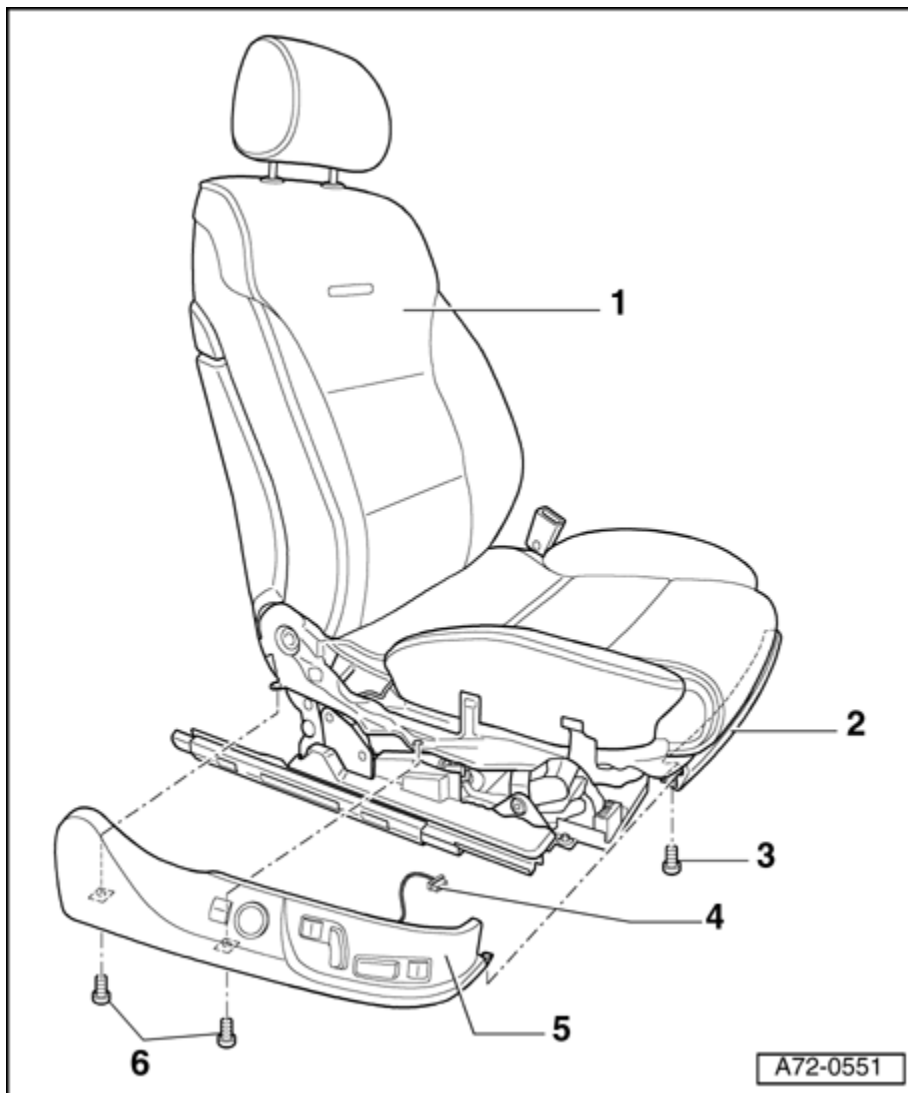
- ♦ *The seat pan is depicted from below and without further attachments.*
- Remove retaining clip - **1** - .



– Remove angle bracket - **2** - .

▪

## Side Trim, Sill Side



**1 - Front seat**

**2 - Front trim panel**

**3 - Screw**

**4 - Connector**

**5 - Side trim (sill side)**

♦ Removing

– Remove seat ⇒ [Seat](#) .

– Mount the fixture for seat repair VAS 6136 on the engine and transmission holder VAS 6095 .

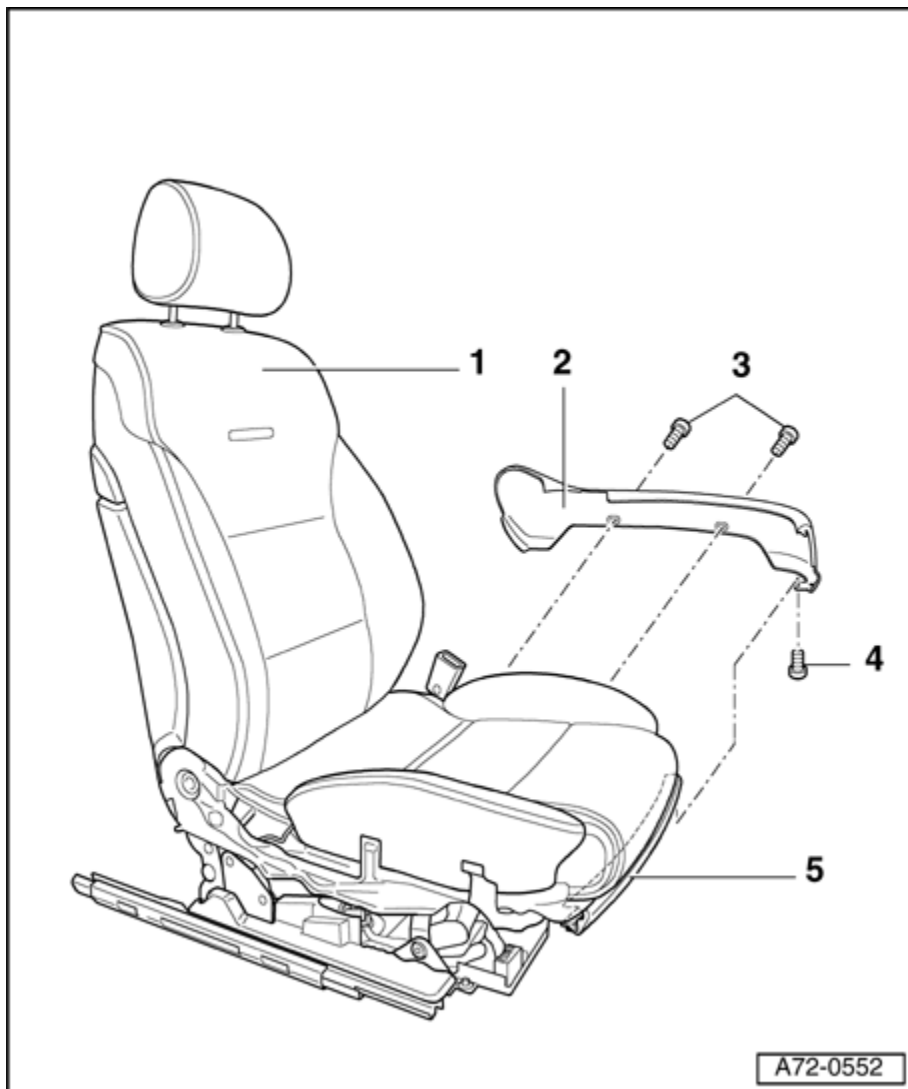
– Attach the front seat to the fixture for seat repair VAS 6136 .

- Remove bolts - **6** - (Qty. 2).
- Remove screw - **3** - .
- Disengage the side trim panels - **5** - at the front trim panel - **2** - .
- Pull off side panel - **5** - starting from switch side.
- Disconnect the connector - **4** - .

## **6 - Screws, (Qty. 2)**

.

## **Side Trim, Tunnel Side**



## 1 - Front seat

## 2 - Side trim (tunnel side)

### ♦ Removing

- Remove seat ⇒ [Seat](#) .
- Mount the fixture for seat repair VAS 6136 on the engine and transmission holder VAS 6095 .
- Attach the front seat to the fixture for seat repair VAS 6136 .
- Remove bolts - **3** - (Qty. 2).
- Remove screw - **4** - .
- Disengage the panels - **2** - at the front trim panel - **5** - .
- Remove side panel - **2** - toward rear.

## 3 - Screws, (Qty. 2)

## 4 - Screw

## 5 - Front trim panel

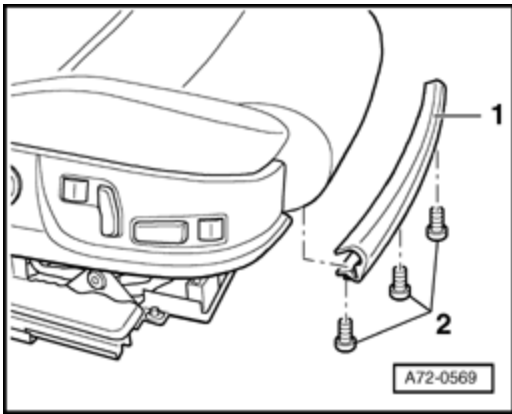
.

## Front Trim

### Removing

- Remove seat ⇒ [Seat](#) .
- Mount the fixture for seat repair VAS 6136 on the engine and transmission holder VAS 6095 .
- Attach the front seat to the fixture for seat repair VAS 6136 .





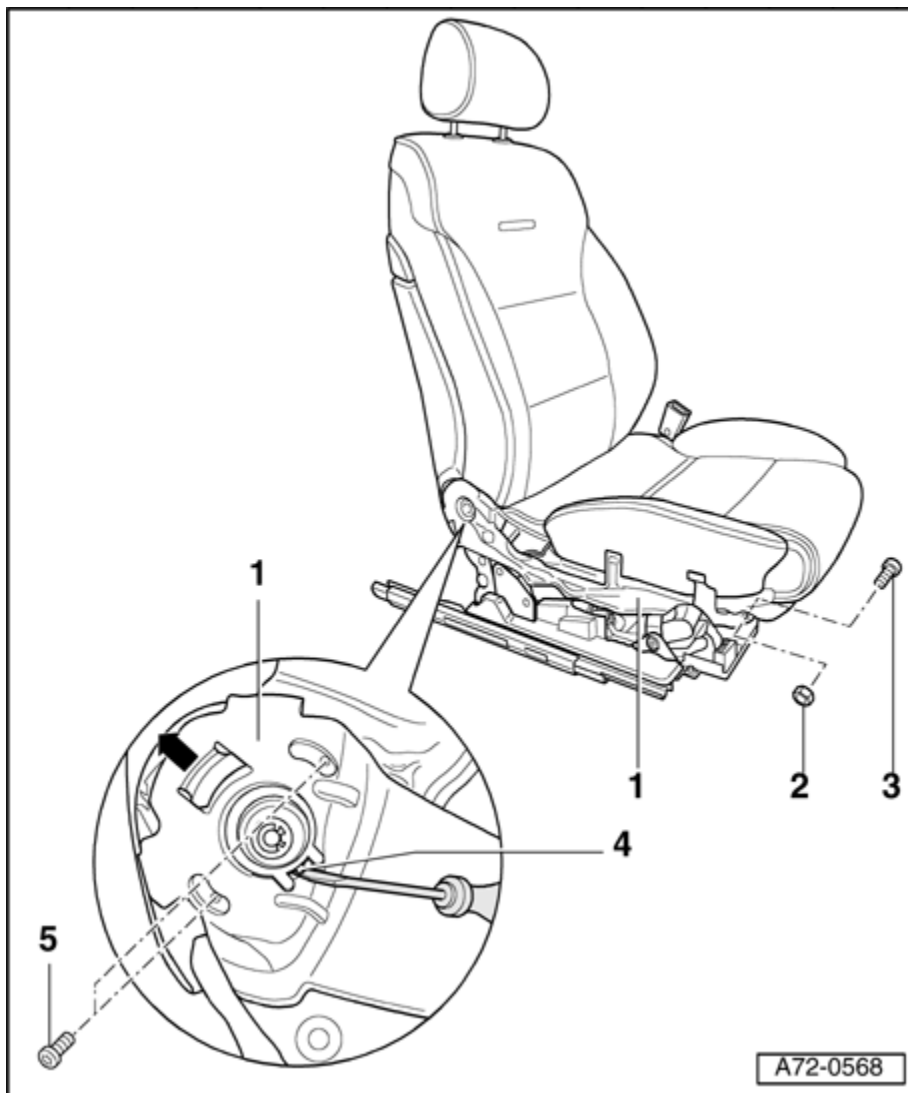
- Remove bolts - **2** - (Qty. 3).
- Remove panel - **1** - .

### **Installing**

- Install trim panel - **1** - in reverse order of removal.

▪

### **Seat Side Trim Bracket**



### 1 - Bracket for seat side panel

#### ♦ Removing

- Remove seat ⇒ [Seat](#) .
- Mount the fixture for seat repair VAS 6136 on the engine and transmission holder VAS 6095 .
- Attach the front seat to the fixture for seat repair VAS 6136 .
- Remove seat side trim on sill side ⇒ [Side Trim, Sill Side](#) .
- Remove seat side trim on tunnel side ⇒ [Side Trim, Tunnel Side](#) and ⇒ [Side Trim, Tunnel Side](#) .
- Remove front trim ⇒ [Front Trim](#) .

- Remove nuts - **2** - (Qty. 2).
- Remove bolts - **3** - (Qty. 2).
- Remove bolts - **5** - (Qty. 2).
- Using a screwdriver, push lug - **4** - in and disengage bracket - **1** - in direction of arrow.
- In the same way, disengage bracket - **1** - on opposite side and remove bracket - **1** - .

♦ Installing

- Install bracket for seat side trim - **1** - in reverse order of removal.

**2 - Nuts (Qty. 2)**

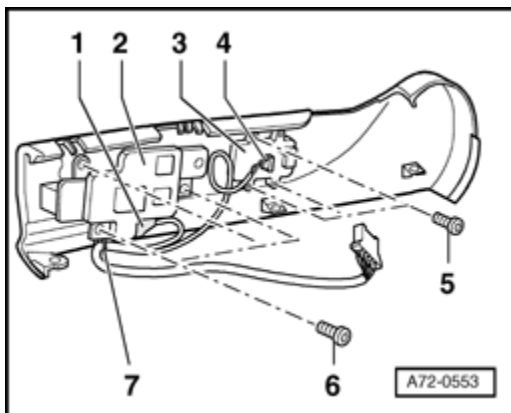
**3 - Screws, (Qty. 2)**

**4 - Tabs (Qty. 2)**

**5 - Screws (Qty. 4)**

.

## Seat Adjustment Switch

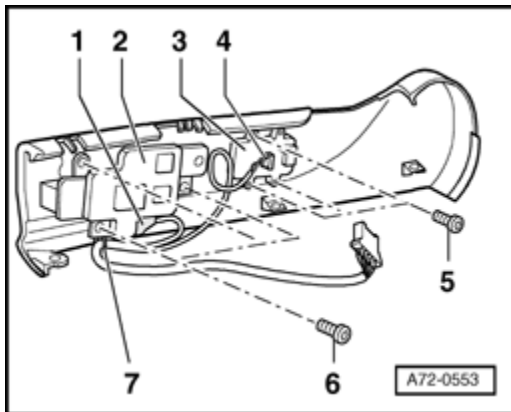


- Remove seat ⇒ [Seat](#) .
- Mount the fixture for seat repair VAS 6136 on the engine and transmission holder VAS 6095 .
- Attach the front seat to the fixture for seat repair VAS 6136 .
- Remove seat side trim on sill side ⇒ [Side Trim, Sill Side](#) .

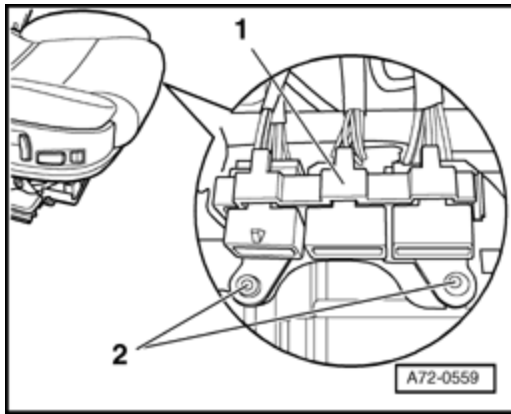
- Pull off switch controls for seat adjustment.
- Open cable tie - **7** - .
- Remove connector - **1** - .
- Remove bolts - **6** - (Qty. 3).
- ♦ Tightening torque: 1.5 Nm
- Remove seat adjustment switch - **2** - .

▪

## Four-Way Lumbar Support Switch



- Remove seat ⇒ [Seat](#) and ⇒ [Seat](#) .
- Mount the fixture for seat repair VAS 6136 on the engine and transmission holder VAS 6095 .
- Attach the front seat to the fixture for seat repair VAS 6136 .
- Remove seat side trim on sill side ⇒ [Side Trim, Sill Side](#) .



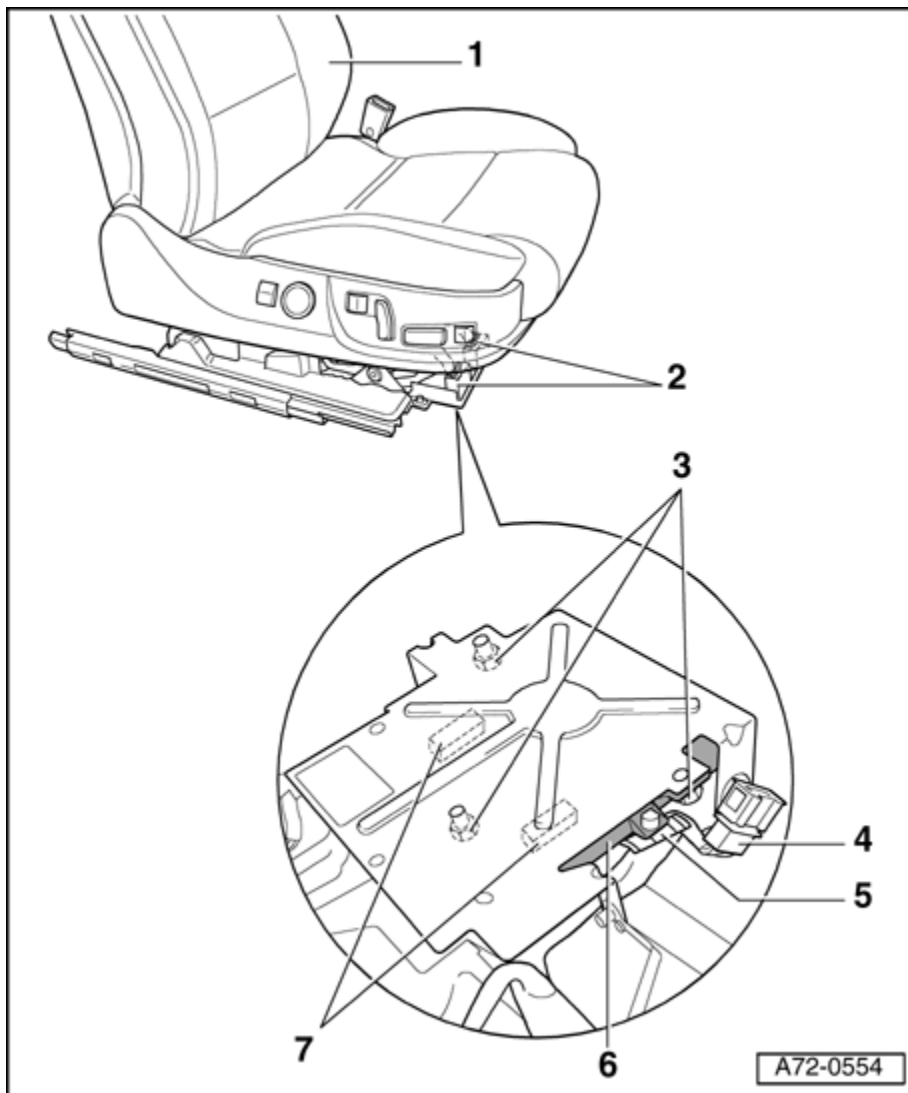
- Remove connector - **4** - .
- Remove bolts - **5** - (Qty. 3).
- ♦ Tightening torque: 0.4 Nm.
- Remove four-way lumbar support switch - **3** - .

.

## Memory Seat/Steering Column Adjustment Control Module and Passenger Memory Seat Control Module

### Note:

- ♦ *If possible: Push seat fully upward and to the rear.*
- ♦ *For the emergency power supply for the seat forward/back and seat height adjustment motors □ refer to ⇒ [Emergency Power Supply Connector Coupling, Pin Assignment](#) .*



**1 - Front seat**

**2 - Connector (Qty. 2)**

**3 - Nuts (Qty. 3)**

**4 - Connector**

**5 - Securing clips (Qty. 2)**

**6 - Control module**

♦ Removing

– Remove connector - **4** - .

– Disengage cable harness at left and right on mounting clips - **5** - (Qty. 2).

- Unscrew nuts - **3** - (Qty. 3) on inside of control module - **6** - .
- On the front side of control module - **6** - , disconnect connector - **2** - (Qty. 2).
- Lift out the control module - **6** - far enough that connectors - **7** - (Qty. 2) can be reached.
- Open securing clips (Qty. 2) and disconnect connectors - **7** - (Qty. 2).

#### ♦ Installing

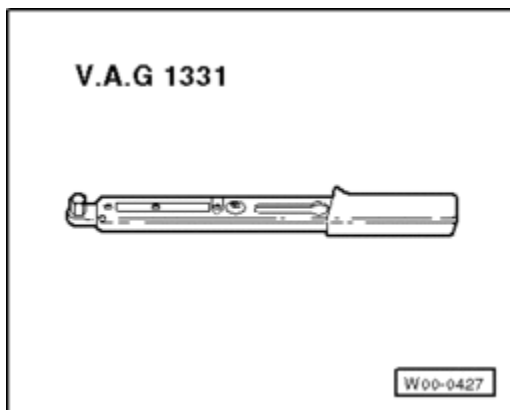
- Install control module - **6** - in reverse order of removal.

### 7 - Connector (Qty. 2)

.

## Connector Station

### Removing



- Remove bolts - **2** - (Qty. 2).
- Remove coupling station - **1** - .

### Installing

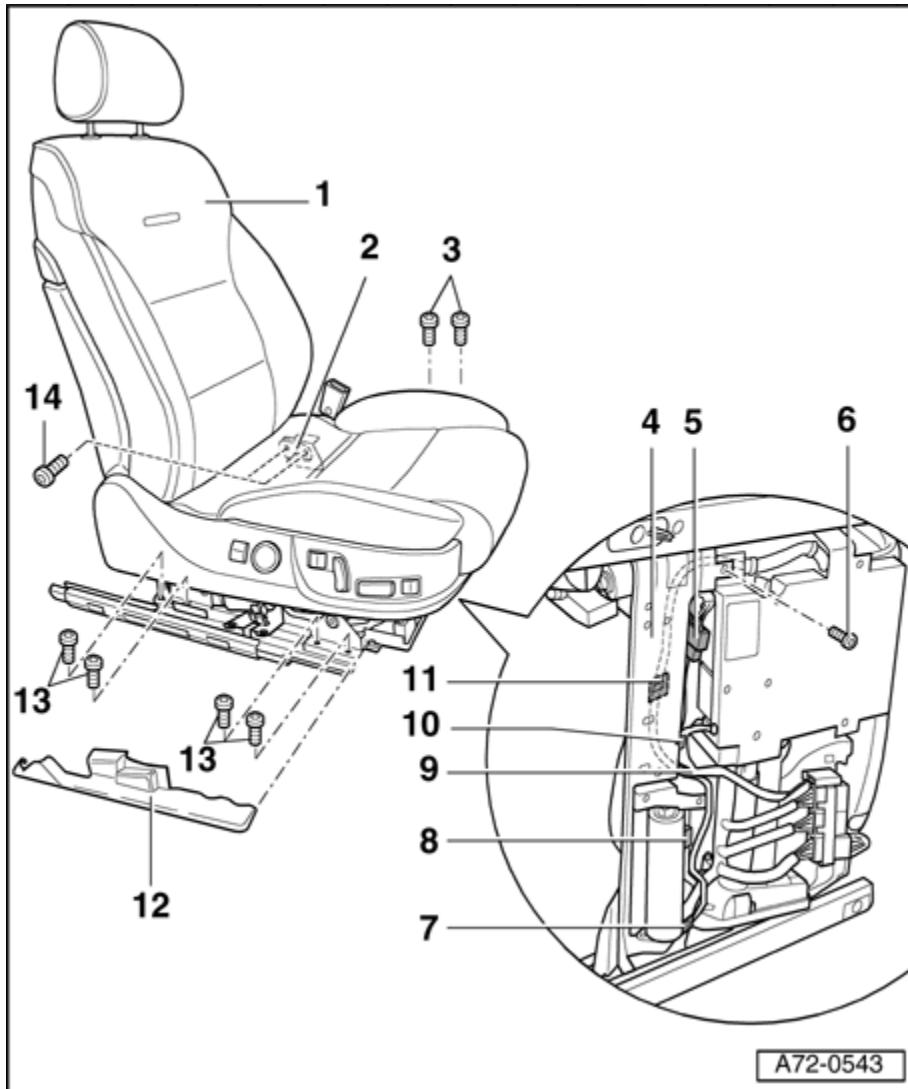
- Install coupling station - **1** - in reverse order of removal.

.

## Seat with Faulty Forward/Back Adjustment Motor

**Note:**

- ♦ *If possible: Tilt seat up.*
- ♦ *To remove the drivers seat: Move steering wheel all the way forward and up.*

**1 - Front seat**♦ **Removing**

- Remove panel - **12** - .
- Remove bolts - **13** - (Qty. 4).
- Fold seat - **1** - toward front.
- Remove bolts - **14** - (Qty. 2).



- Remove screw - **6** - .
- Unclip harness connector - **5** - from retaining plate - **4** - .
- Unclip harness connector - **11** - from retaining plate - **4** - .
- Disengage cable harness - **9** - at clips - **10** - and - **7** - .
- Disconnect the connector - **8** - on the seat forward/back adjustment motor.
- With a second technician, remove backrest with seat pan from vehicle.

♦ Installing

**CAUTION!**

**Ensure function of the safety Ground (GND) lock ⇒ [Safety Ground Lock](#) .**

- Install front seat - **1** - in reverse order of removal.

**2 - Safety Ground (GND) lock**

**3 - Screws, (Qty. 2)**

- ♦ Tightening torque: 20 Nm.

**4 - Seat forward/back adjustment motor retaining plate**

**5 - Connector**

**6 - Screw**

**7 - Clip**

**8 - Seat forward/back adjustment motor connector**

**9 - Cable harness**

**10 - Clip**

**11 - Connector**

**12 - Trim**

**13 - Screws (Qty. 4)**

- 

This diagram illustrates the exploded view of a window blind assembly. The components are labeled with numbers 1 through 8:

- 1**: Points to the left horizontal rail.
- 2**: Points to the left vertical support bracket.
- 3**: Points to the central pivot mechanism.
- 4**: Points to the right vertical support bracket.
- 5**: Points to the right horizontal rail.
- 6**: Points to the central pivot mechanism.
- 7**: Points to the right horizontal rail.
- 8**: Points to the screws used to secure the brackets and rails.

- x-ebahn:///C:/Program%20Files/eBahn/data/AUDI-D-D3-BD02.ebn/AUDI/D/D3/Repair... 12/31/2013

#### 4 - Screws, (Qty. 2)

- ♦ Tightening torque: 20 Nm

#### 5 - Motor

- ♦ Removing

- Remove the seat with the malfunctioning seat forward/back adjustment motor ⇒ [Seat with Faulty Forward/Back Adjustment Motor](#) .
- Remove bolts - **4** - (Qty. 2).
- Remove holding plate of safety Ground (GND) lock - **3** - .
- Remove bolts - **8** - (Qty. 2).
- Remove bolts - **2** - (Qty. 2).
- Disengage the seat forward/back adjustment motor - **5** - from the shafts - **1** - and - **6** - .
- Using a cordless drill and a long shaft, move both seat rails by sliding until the concealed bolts - **8** - (Qty. 2) are visible.
- Remove bolts - **8** - (Qty. 2).
- Replace the lower seat frame with the seat forward/back adjustment motor - **7** - .

- ♦ Installing

#### CAUTION!

**Ensure function of the safety Ground (GND) lock ⇒ [Safety Ground Lock](#) .**

- Install the lower frame with the seat forward/back adjustment motor - **7** - in reverse order of removal.

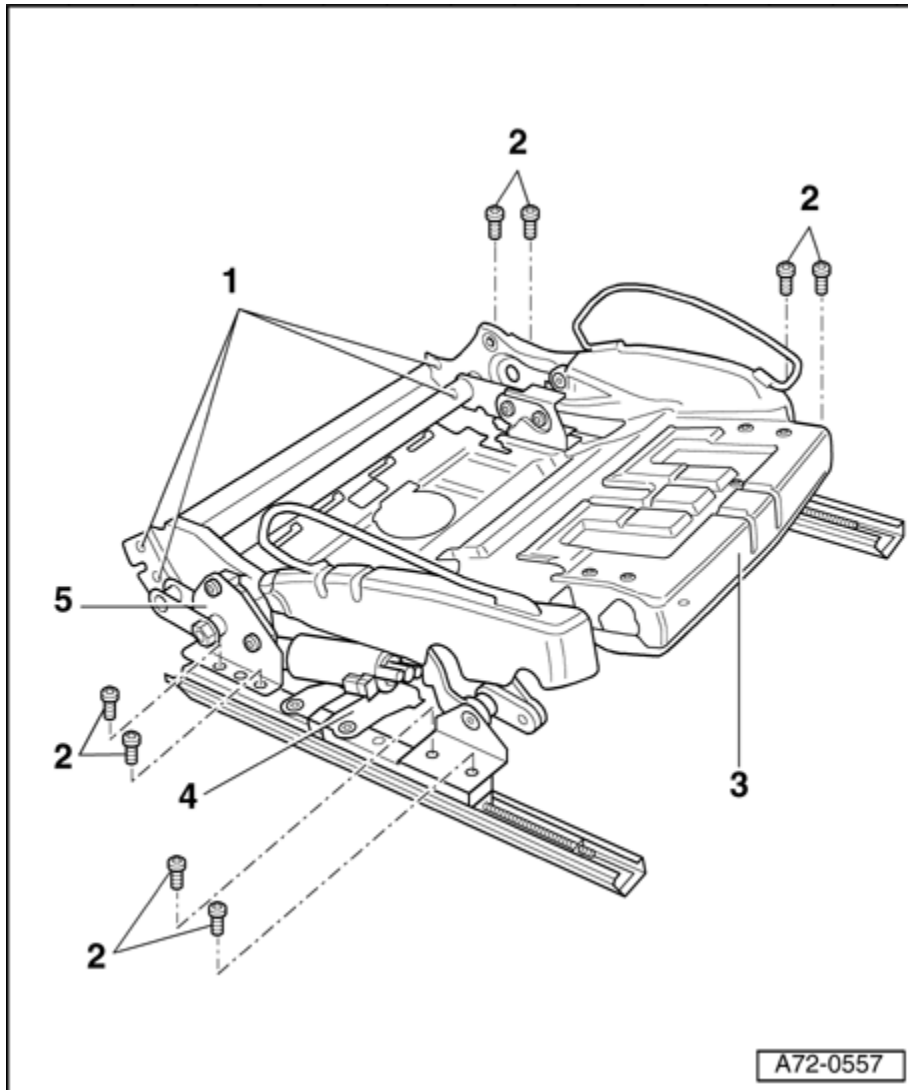
#### 6 - Shaft

#### 7 - Lower seat frame with seat forward/back adjustment motor

#### 8 - Screws (Qty. 4)

- ♦ Tightening torque: 40 Nm.

## Seat Upper Frame



**1 - Rivets (Qty. 4)**

**2 - Bolts (Qty. 8)**

♦ Tightening torque: 20 Nm

**3 - Seat pan**

**4 - Lower seat pan frame**

**5 - Seat pan upper frame with seat height adjustment motor**

### ♦ Removing

- Remove seat ⇒ [Seat](#) .
- Mount the fixture for seat repair VAS 6136 on the engine and transmission holder VAS 6095 .
- Attach the front seat to the fixture for seat repair VAS 6136 .
- Remove side trim on sill side ⇒ [Side Trim, Sill Side](#) .
- Remove side trim on tunnel side ⇒ [Side Trim, Tunnel Side](#) .
- Remove front trim ⇒ [Front Trim](#) .
- Remove bracket for seat side panels ⇒ [Seat Side Trim Bracket](#) .
- Remove the backrest ⇒ [Front Backrest](#) .
- Remove cover and padding from seat pan ⇒ [Front Seat Cushion and Upholstery, Power Memory Seats](#) .
- Remove control module ⇒ [Memory Seat/Steering Column Adjustment Control Module and Passenger Memory Seat Control Module](#) .
- Remove coupling holder ⇒ [Connector Station](#) .
- Remove belt buckle ⇒ [Belt Latch](#) .
- Drill open rivets - **1** - (Qty. 4).
- Remove bolts - **2** - (Qty. 8).
- Disengage cable harness and harness connectors from seat pan and motors.
- Replace upper frame of seat pan - **5** - .

### ♦ Installing

- Install upper seat pan frame - **5** - in reverse order of removal.

## Seat Pan

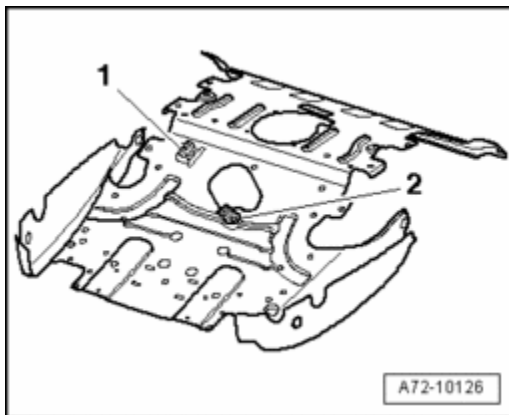
### Note:

- ♦ *The seat pan as genuine replacement part is supplied with a retaining clip and angle bracket for passenger occupant detection system for front passengers airbag deactivation (country versions). On vehicles without passenger occupant detection system for front passengers airbag deactivation (country versions), the components must be removed.*

**Note:**

- ♦ *The seat pan is depicted from below and without further attachments.*

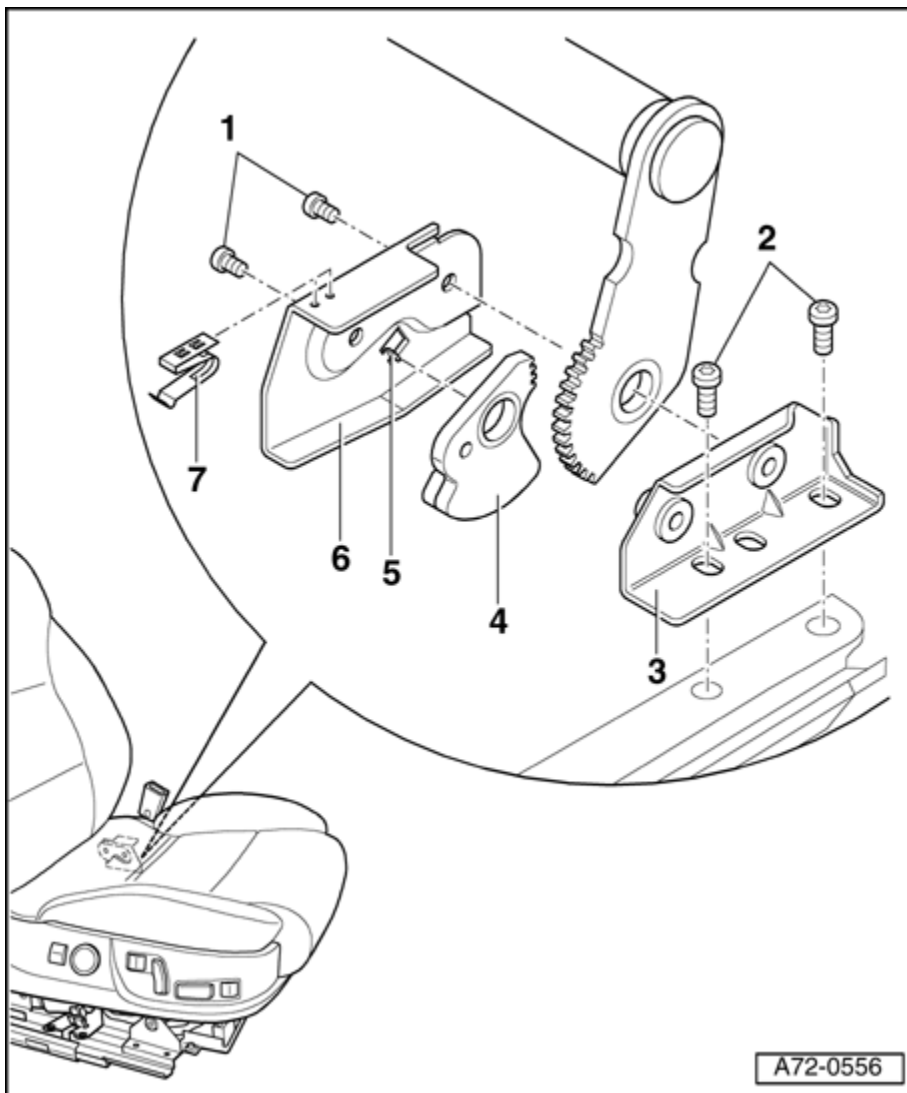
- Remove retaining clip - **1** - .



- Remove angle bracket - **2** - .

▪

**Safety Ground Lock**



**1 - Screws, (Qty. 2)**

- ♦ Tightening torque: 19 Nm.

**2 - Screws, (Qty. 2)**

- ♦ Tightening torque: 20 Nm.

**3 - Retaining plate**

**4 - Ground (GND) lock**

- ♦ Removing

- Remove seat ⇒ [Seat](#) .

- Mount the fixture for seat repair VAS 6136 on the engine and transmission holder VAS 6095 .

- Attach the front seat to the fixture for seat repair VAS 6136 .
- Remove bolts - **1** - (Qty. 2).
- Remove holding plate - **6** - and Ground (GND) lock - **4** - .
- Complete removal: Unscrew bolts - **2** - (Qty. 2) and remove holding plate - **3** - .

♦ Installing

- If completely removed: Bolt holding plate - **3** - on with bolts - **2** - (Qty. 2).
- Ensure that spring - **7** - is engaged into holding plate - **6** - .
- Insert Ground (GND) lock - **4** - flush to stop - **5** - and to spring - **7** - .
- Bolt holding plate - **6** - and Ground (GND) lock - **4** - on with bolts - **1** - (Qty. 2).

**5 - Stop**

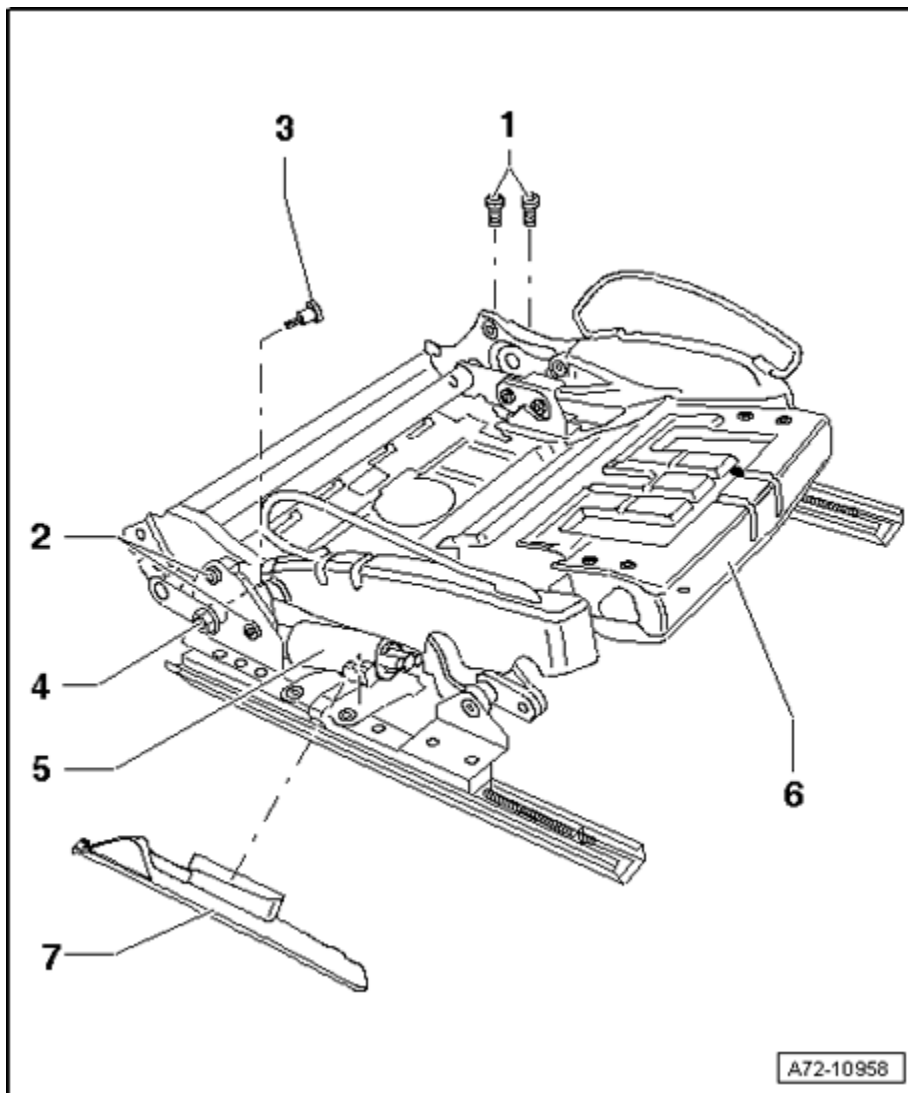
**6 - Retaining plate**

**7 - Spring**

.

**Seat Height Adjustment Motor**



**1 - Screw**

♦ Quantity: 2

♦ 20 Nm

**2 - Screw**

♦ Quantity: 2

♦ 18 Nm

**3 - Shoulder pin**

♦ 25 Nm

**4 - Nut**

♦ 25 Nm

## 5 - Seat height adjustment motor

♦ Removing

- Remove seat ⇒ [Seat](#) .
- Mount the fixture for seat repair VAS 6136 on the engine and transmission holder VAS 6095 .
- Attach the front seat to the fixture for seat repair VAS 6136 .
- Remove side trim on sill side ⇒ [Side Trim, Sill Side](#) .
- Remove side trim on tunnel side ⇒ [Side Trim, Tunnel Side](#) .
- Remove the cover - **7** - .
- Remove the bolts - **1** - (Qty. 2) for securing the seat upper frame to the lower frame.
- Remove the bolts - **2** - (Qty. 2).
- Remove the shoulder pin - **3** - and the nut - **4** - .
- Tip the seat upper frame - **6** - forward.

### CAUTION!

**Injury can result if the seat upper frame tips back. Secure the seat upper frame against tipping back.**

- Loosen the electrical connector on the seat height adjustment motor and remove the motor.
- ♦ Installing ⇒ [Replacing the motor](#)
- Position the motor - **1** - with the pins - **A** - (Qty. 2) in the corresponding mount.
- Tighten the motor.
- Tilt the seat upper frame down and guide the toothed segment - **3** - into the seat height adjustment motor.

### CAUTION!

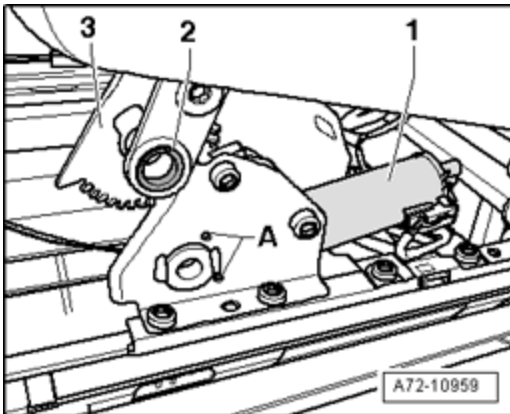
**Do not damage the bearing bushing - 2 - when insertign the nut and the shoulder pin.**

- Insert the nut.
- Tighten the shoulder pin.
- Tighten the bolts connecting the seat upper frame to the lower frame.
- Finish the rest of the procedure.

## 6 - Seat upper frame

## 7 - Cover

▪

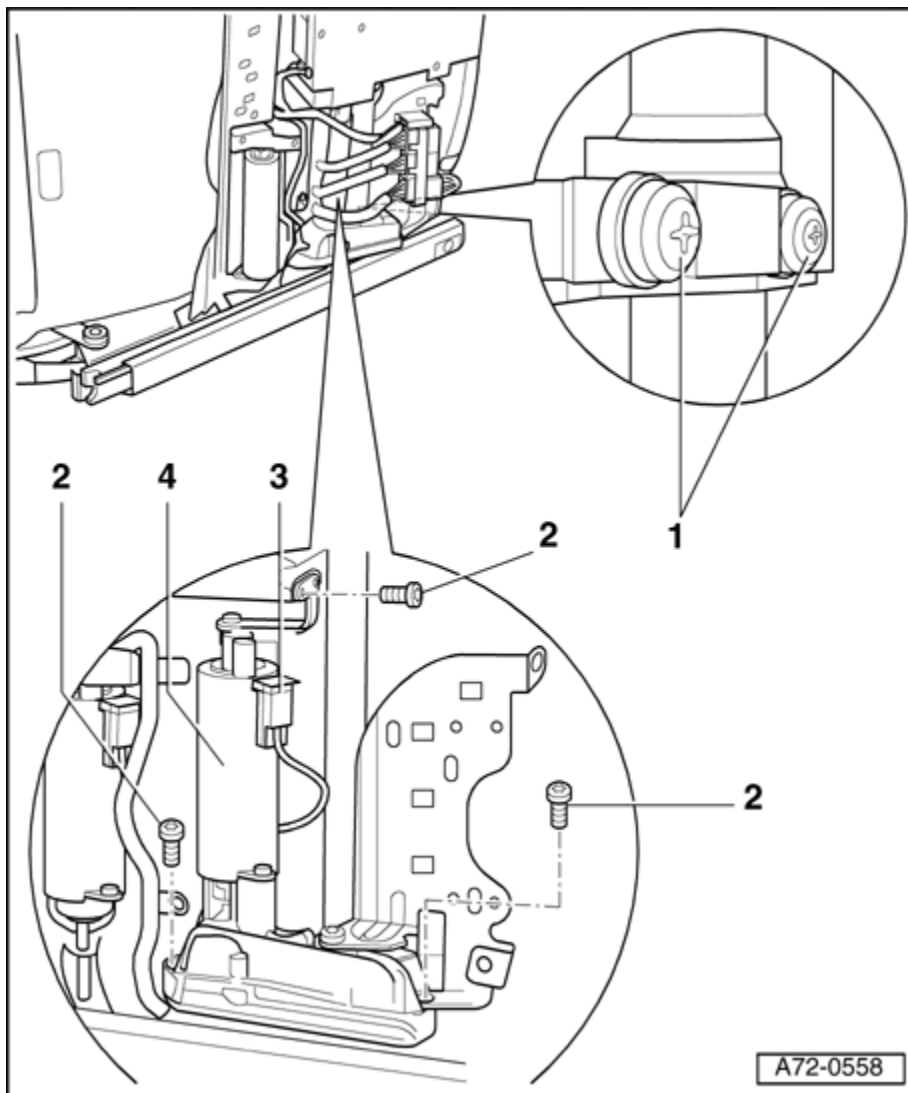


## Replacing the motor

Tightening torque: ⇒ [Seat Height Adjustment Motor](#)

▪

## Seat Angle Adjustment Motor

**1 - Screws, (Qty. 2)**

- ♦ Tightening torque: 5 Nm

**2 - Bolts (Qty. 3)**

- ♦ Tightening torque: 10 Nm

**3 - Connector****4 - Seat angle adjustment motor**

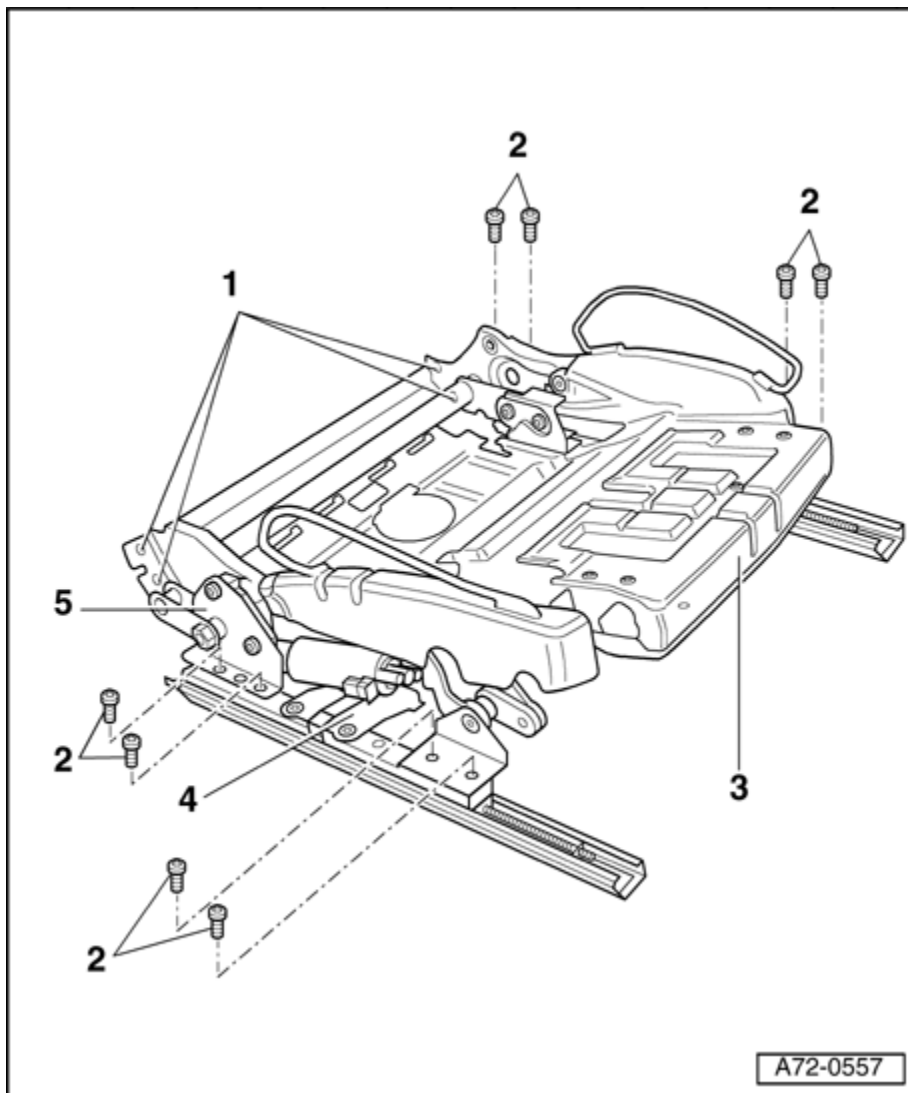
- ♦ Removing
  - Remove seat ⇒ [Seat](#) .
  - Mount the fixture for seat repair VAS 6136 on the engine and transmission holder VAS 6095 .

- Attach the front seat to the fixture for seat repair VAS 6136 .
- Remove coupling holder ⇒ [Connector Station](#) .
- Remove connector - **3** - .
- Remove bolts - **2** - (Qty. 3).
- Remove bolts - **1** - (Qty. 2).
- Remove the seat angle adjustment motor - **4** - .
- ♦ Installing
- Installation is reverse of removal.

## Seat Cushion Extension Motor

### Note:

- ♦ *If motor is malfunctioning, seat pan - **3** - must be replaced.*



**1 - Rivets (Qty. 4)**

**2 - Bolts (Qty. 8)**

**3 - Seat pan with seat cushion extension motor**

♦ Removing

– Remove seat ⇒ [Seat](#) .

– Mount the fixture for seat repair VAS 6136 on the engine and transmission holder VAS 6095 .

– Attach the front seat to the fixture for seat repair VAS 6136 .

– Remove side trim on sill side ⇒ [Side Trim, Sill Side](#) .

– Remove side trim on tunnel side ⇒ [Side Trim, Tunnel Side](#) .

- Remove front trim ⇒ [Front Trim](#) .
- Remove bracket for seat side panels ⇒ [Seat Side Trim Bracket](#) .
- Remove the backrest ⇒ [Front Backrest](#) .
- Remove cover and padding from seat pan ⇒ [Front Seat Cushion and Upholstery, Power Memory Seats](#) .
- Remove belt buckle ⇒ [Belt Latch](#) .
- Disengage cable harness and harness connectors from seat pan and seat cushion extension motor.
- Drill open rivets - **1** - (Qty. 4).
- Replace seat pan with seat cushion extension motor - **3** - .

#### ♦ Installing

- Installation is reverse of removal.

### **4 - Lower seat pan frame**

### **5 - Seat pan upper frame**

.

## **Backrest Adjustment Motor**

### **Removing**

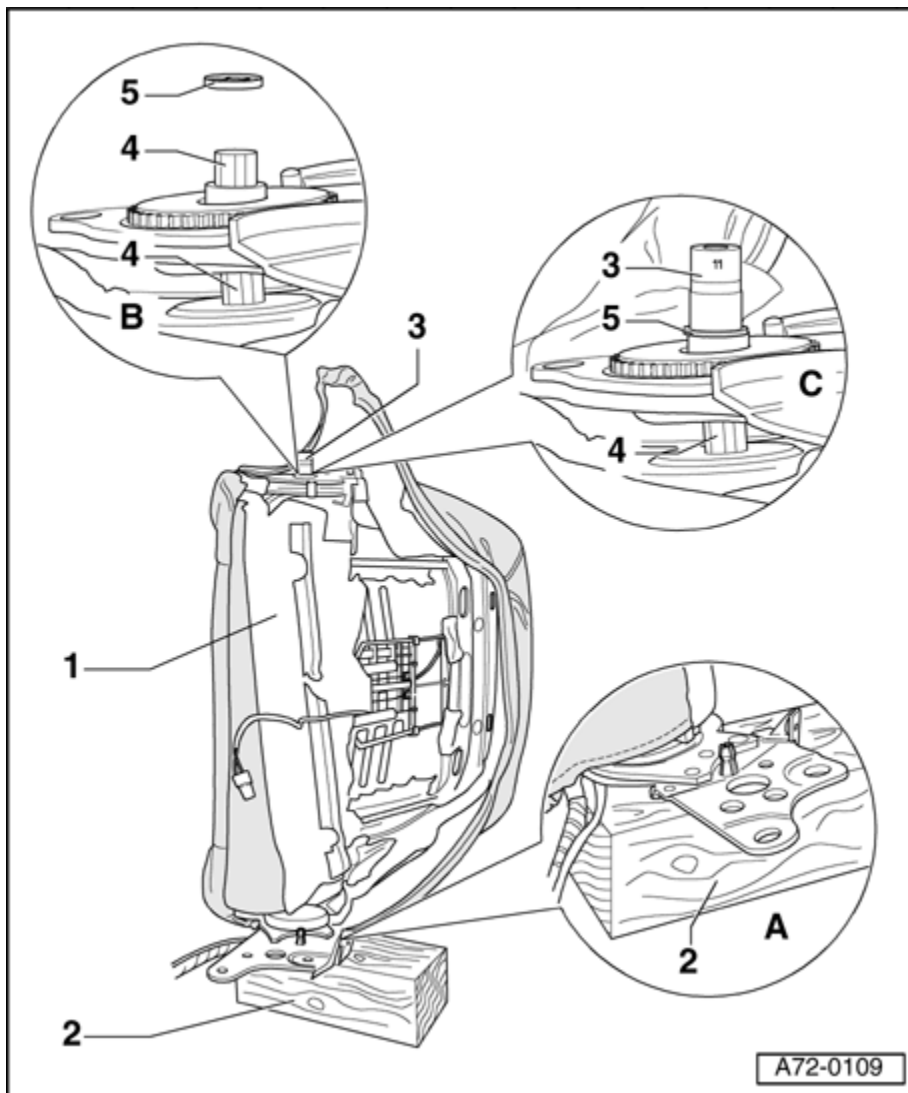
- Remove seat ⇒ [Seat](#) .
- Mount the fixture for seat repair VAS 6136 on the engine and transmission holder VAS 6095 .
- Attach the front seat to the fixture for seat repair VAS 6136 .
- Remove side trim on sill side ⇒ [Side Trim, Sill Side](#) .
- Remove side trim on tunnel side ⇒ [Side Trim, Tunnel Side](#) .
- Remove front trim ⇒ [Front Trim](#) .
- Remove bracket for seat side panels ⇒ [Seat Side Trim Bracket](#) .

- Remove top backrest cover ⇒ [Upper Backrest Cover](#) .
- Remove bottom backrest cover ⇒ [Lower Backrest Cover](#) .
- Remove bolt from motor for backrest adjustment ⇒ [Removing mount for motor for backrest adjustment](#) .
- Pry off spring washer - **5** - (illustration - **B** - ) on the side of backrest motor using a screwdriver.
- Tap shaft - **4** - through the side of the backrest frame using a hammer and drift punch.
- Pull out shaft - **4** - just far enough out of backrest frame - **1** - until motor for backrest adjustment comes out.

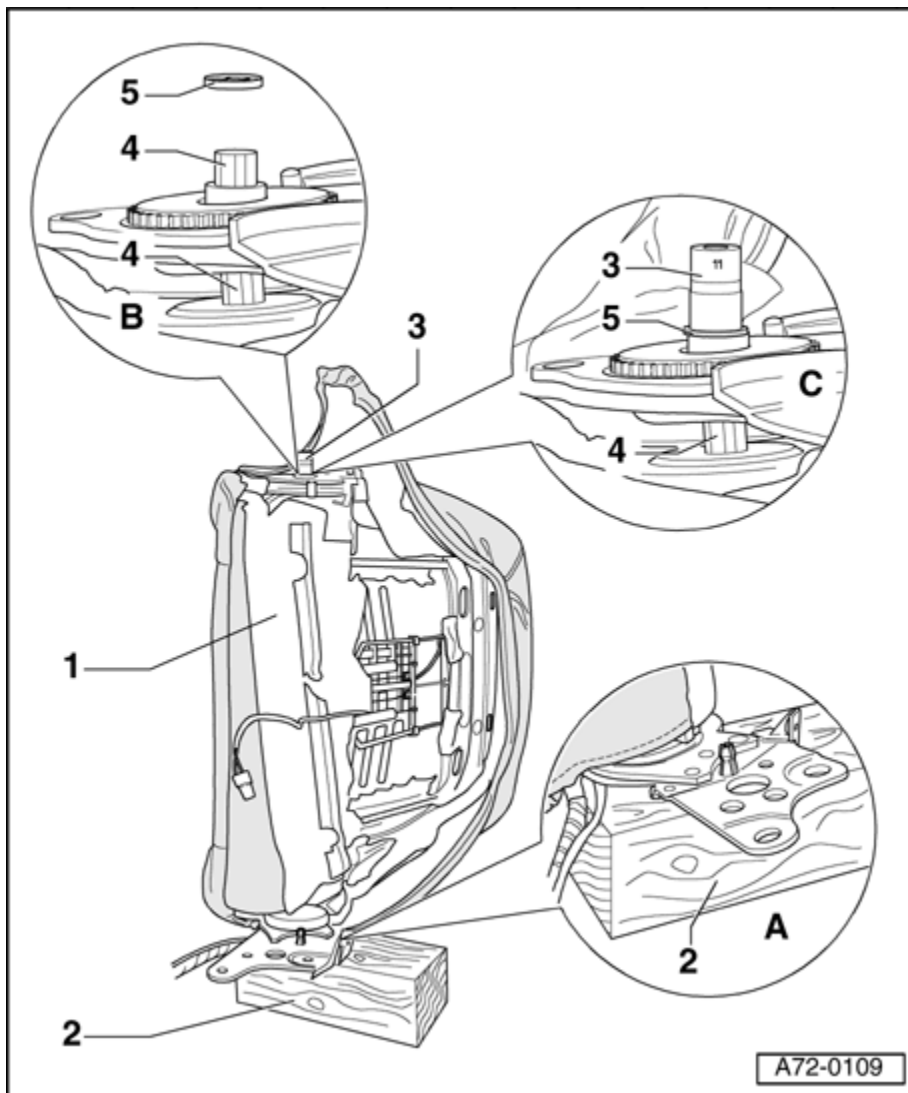
## Installing

- Adapt the splines of new motor for backrest adjustment ⇒ [Preparing backrest adjustment motor](#) .
- Slide shaft - **4** - through motor for backrest adjustment and through backrest frame - **1** - .
- Set seat aside.
- Place a wood block - **2** - beneath shaft - **4** - (illustration - **A** - ) on opposite side of motor for backrest adjustment.
- Tap spring washer - **5** - onto shaft - **4** - using a socket wrench 11mm insert (illustration - **C** - ).
- Install screw on backrest adjustment motor and connect connector.





- For seats with seat memory: After installing seat, perform a basic setting for backrest or seat.



**1 - Backrest frame**

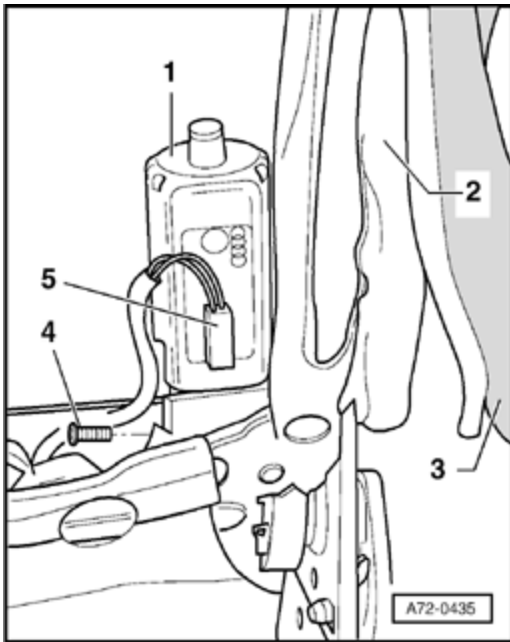
**2 - Wood block**

**3 - Socket 11mm**

**4 - Shaft**

**5 - Spring washer**

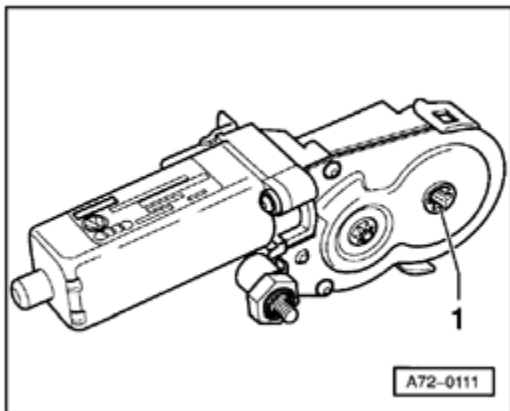
.



### Removing mount for motor for backrest adjustment

- Disconnect connector - 5 - .
- Remove cover - 3 - and anti-crush fleece - 2 - to side.
- Remove screw - 4 - .

▪

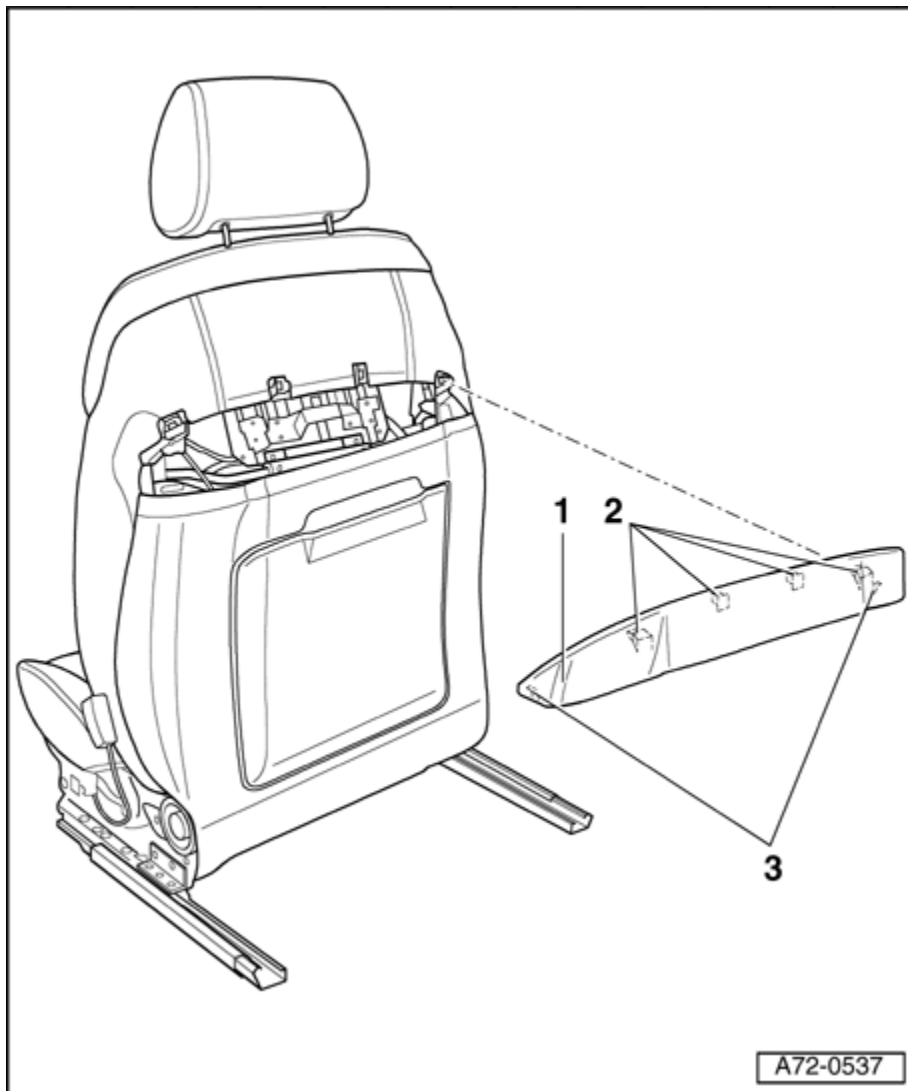


### Preparing backrest adjustment motor

- Using a screwdriver, turn the locating element of splines - 1 - so it aligns with shaft of backrest frame.

▪

## Upper Backrest Cover



### 1 - Top backrest panel

#### ♦ Removing

- Move upper backrest completely forward.
- Release clips - **2** - (Qty. 4). Insert a flat screwdriver into clip and turn it clockwise until clip releases.
- Disengage backrest cover - **1** - upward from brackets - **3** - (Qty. 2).

#### ♦ Installing

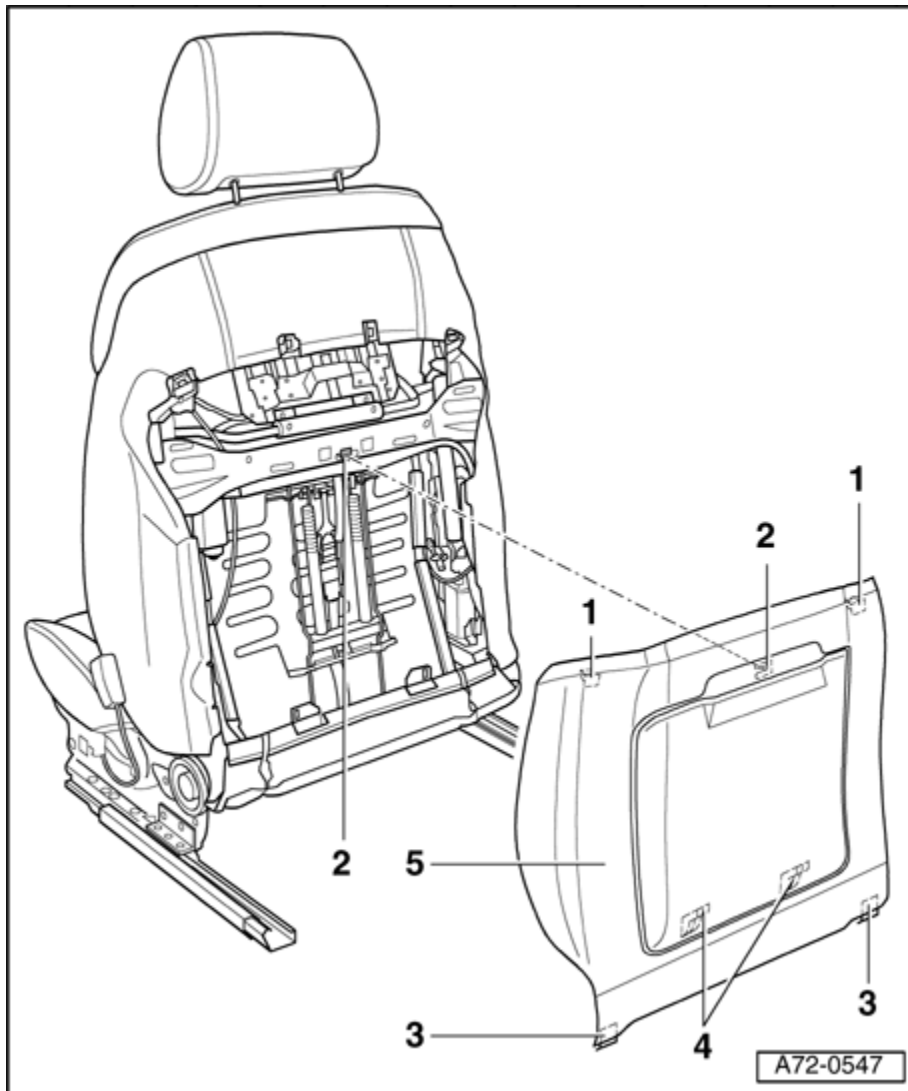
- Install top backrest panel - **1** - in reverse order of removal.

**2 - Clips (Qty. 4)**

**3 - Retainers (Qty. 2)**

▪

## Lower Backrest Cover



**1 - Clips (Qty. 2)**

**2 - Clip**

**3 - Retainers (Qty. 2)**

**4 - Retainers (Qty. 2)**

## 5 - Lower backrest panel

### ♦ Removing

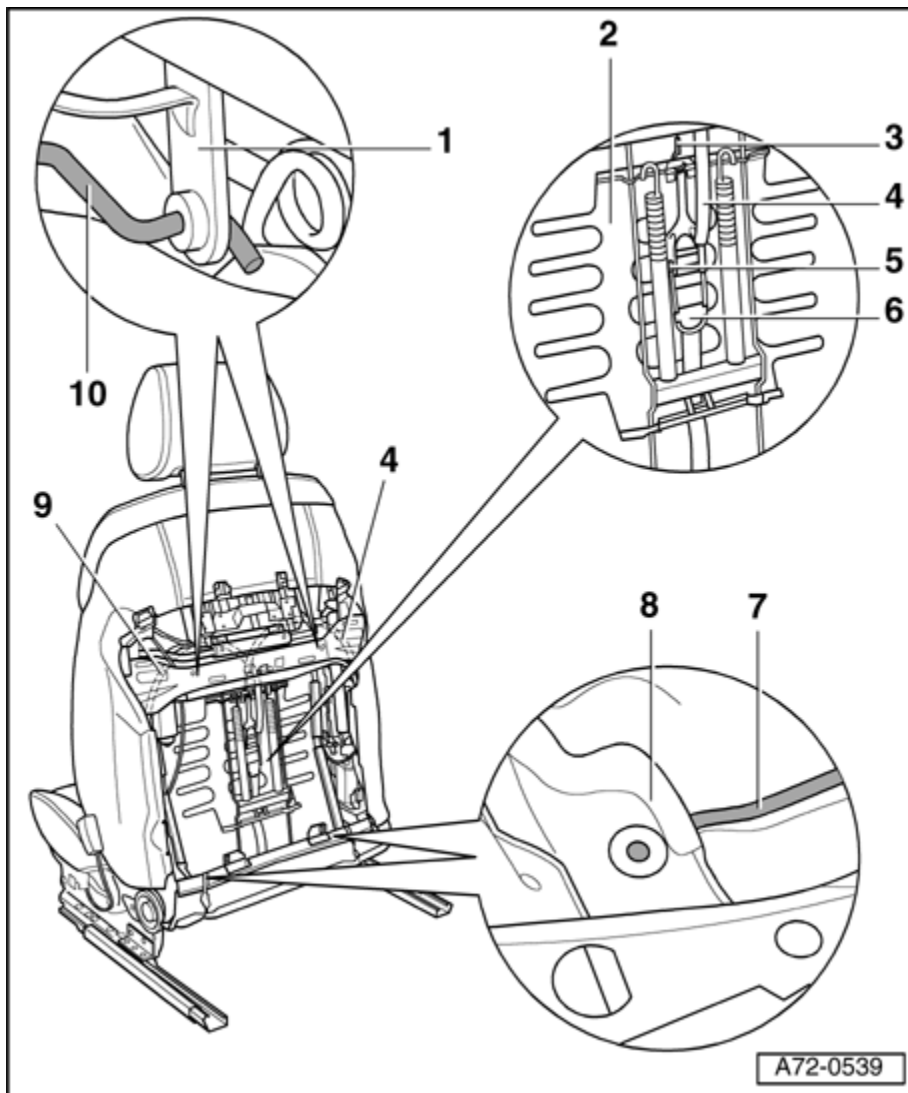
- Remove top backrest cover ⇒ [Upper Backrest Cover](#) .
- Release clips - **1** - (Qty. 2): Insert a flat screwdriver into clip and turn it clockwise until clip releases.
- Release clip - **2** - : Insert a flat screwdriver into clip and turn it clockwise until clip disengages to the first detent.
- Use the flat screwdriver to slide clip - **2** - toward left until backrest panel - **5** - disengages.
- Disengage backrest cover - **5** - upward from brackets - **3** - (Qty. 2) and - **4** - (Qty. 2).

### ♦ Installing

- If damaged, replace clips - **1** - (Qty. 2) and - **2** - .
- Guide clip - **2** - into clip holder.
- Install backrest panel in reverse order of removal.

.

## Four-Way Lumbar Support



### 1 - Retainers (Qty. 2)

### 2 - Four-way lumbar support

#### ◆ Removing

- Remove seat ⇒ [Seat](#) .
- Mount the fixture for seat repair VAS 6136 on the engine and transmission holder VAS 6095 .
- Attach the front seat to the fixture for seat repair VAS 6136 .
- Remove top backrest cover ⇒ [Upper Backrest Cover](#) .
- Remove bottom backrest cover ⇒ [Lower Backrest Cover](#) .
- Disengage the bracket - **7** - at bottom on left and right sides from the backrest frame -

**8 - .**

- Disengage retainer - **10** - at top on left and right sides from brackets - **1** - (Qty. 2).
- Disengage release for lumbar adjustment - **9** - at hook - **3** - .
- Disengage cable for lumbar support adjustment - **4** - at retaining pins - **5** - and at relay pulley - **6** - .
- Remove four-way lumbar support - **2** - .

♦ Installing

- Installation is reverse of removal.

**3 - Hook**

**4 - Lumbar support height adjustment release**

**5 - Retaining pins**

**6 - Idler pulley**

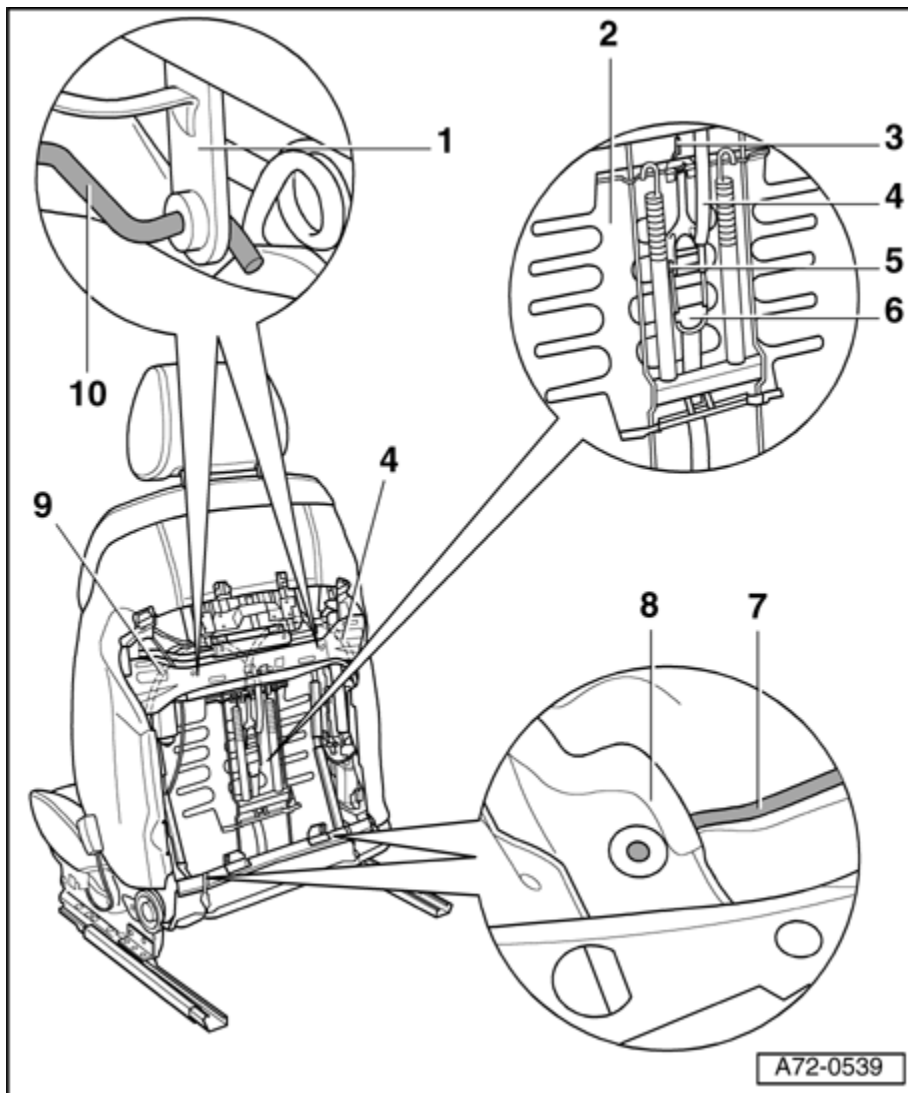
**7 - Retainer**

**8 - Backrest frame**

**9 - Lumbar support adjustment release**

**10 - Retainer**

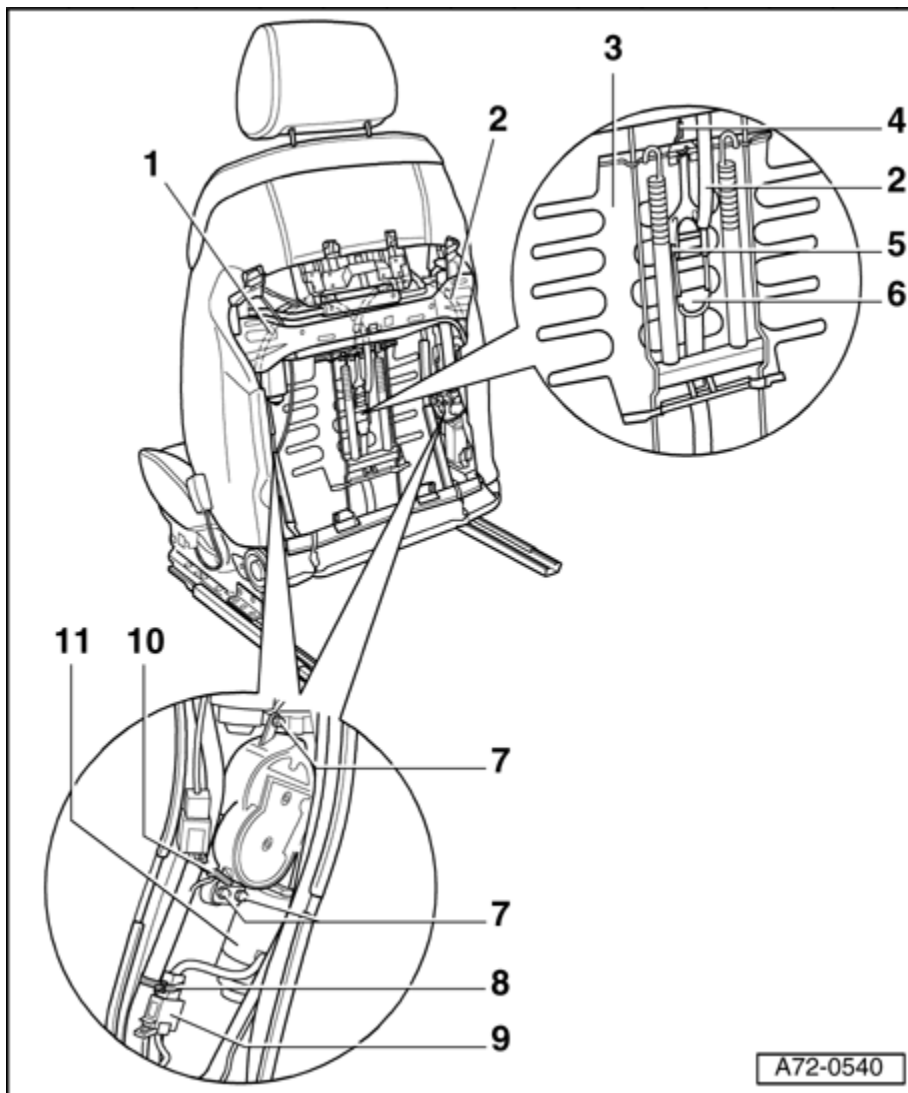




## Lumbar Support Adjustment Motor

### Note:

- ♦ On the front passengers seat depicted here, the motor for lumbar height adjustment is located on the right side and the motor for lumbar support adjustment is located on the left side.



**1 - Lumbar support adjustment release**

**2 - Lumbar support height adjustment release**

**3 - Four-way lumbar support**

**4 - Hook**

**5 - Retaining pins**

**6 - Idler pulley**

**7 - Cap nuts (Qty. 3)**

**8 - Cable tie**

**9 - Connector**

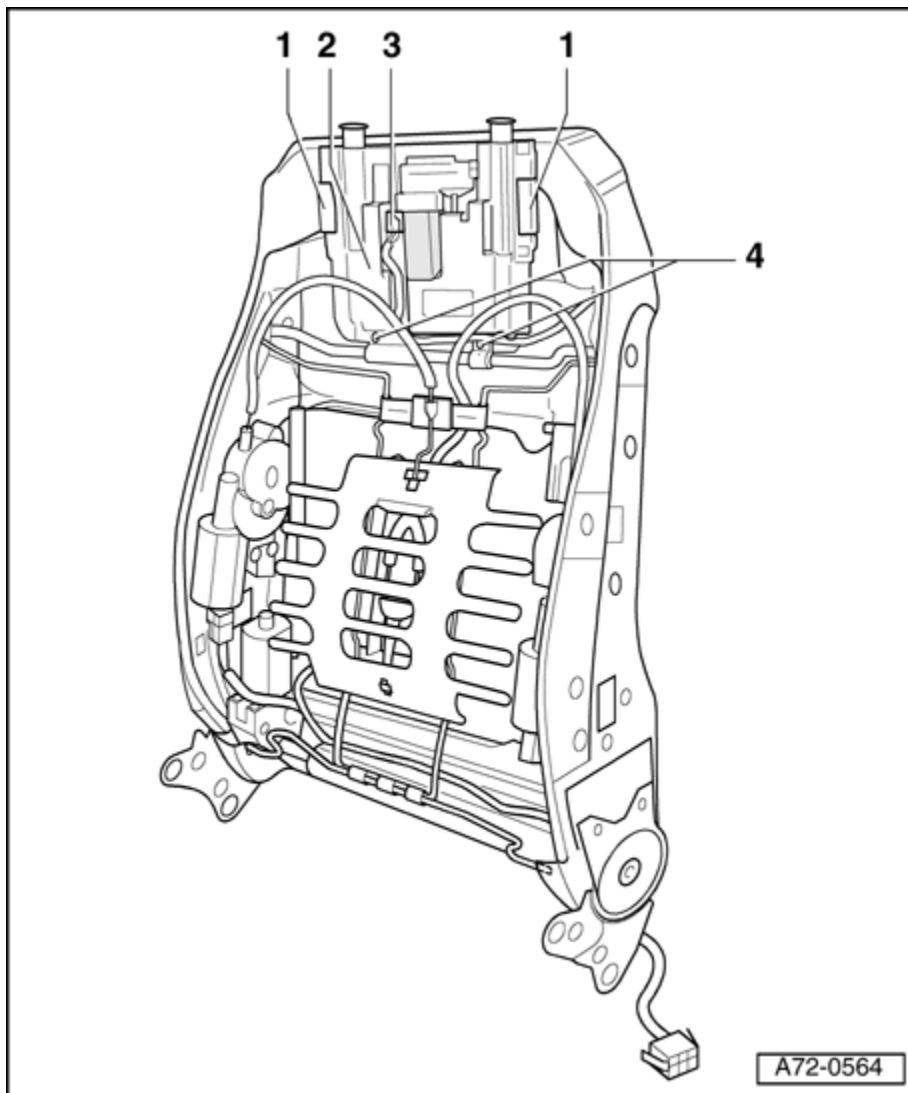
## 10 - Cable tie

## 11 - Lumbar support adjustment motors (Qty. 2)

- ♦ Remove seat ⇒ [Seat](#) .
- ♦ Mount the fixture for seat repair VAS 6136 on the engine and transmission holder VAS 6095 .
- ♦ Attach the front seat to the fixture for seat repair VAS 6136 .
- ♦ Remove top backrest cover ⇒ [Upper Backrest Cover](#) .
- ♦ Remove bottom backrest cover ⇒ [Lower Backrest Cover](#) .
- ♦ Open cable ties - **8** - and - **10** - .
- ♦ Disconnect connector - **9** - .
- ♦ Unscrew cap nuts - **7** - (Qty. 3).
- ♦ Remove motor on opposite side the same way.
- ♦ Disengage cable for lumbar height adjustment - **1** - at hook - **4** - .
- ♦ Disengage cable for lumbar support adjustment - **2** - at retaining pins - **5** - and at relay pulley - **6** - .
- ♦ Remove motors for lumbar support (Qty. 2).
- ♦ Installing
- ♦ Install motors for lumbar adjustment - **11** - in reverse order of removal.

▪

## Headrest Adjustment Motor



### 1 - Retainers (Qty. 2)

### 2 - Holding plate with headrest adjustment motor

#### ♦ Removing

- Remove headrest ⇒ [Power Headrest](#) .
- Remove seat ⇒ [Seat](#) .
- Mount the fixture for seat repair VAS 6136 on the engine and transmission holder VAS 6095 .
- Attach the front seat to the fixture for seat repair VAS 6136 .
- Remove side trim on sill side ⇒ [Side Trim, Sill Side](#) .
- Remove side trim on tunnel side ⇒ [Side Trim, Tunnel Side](#) .

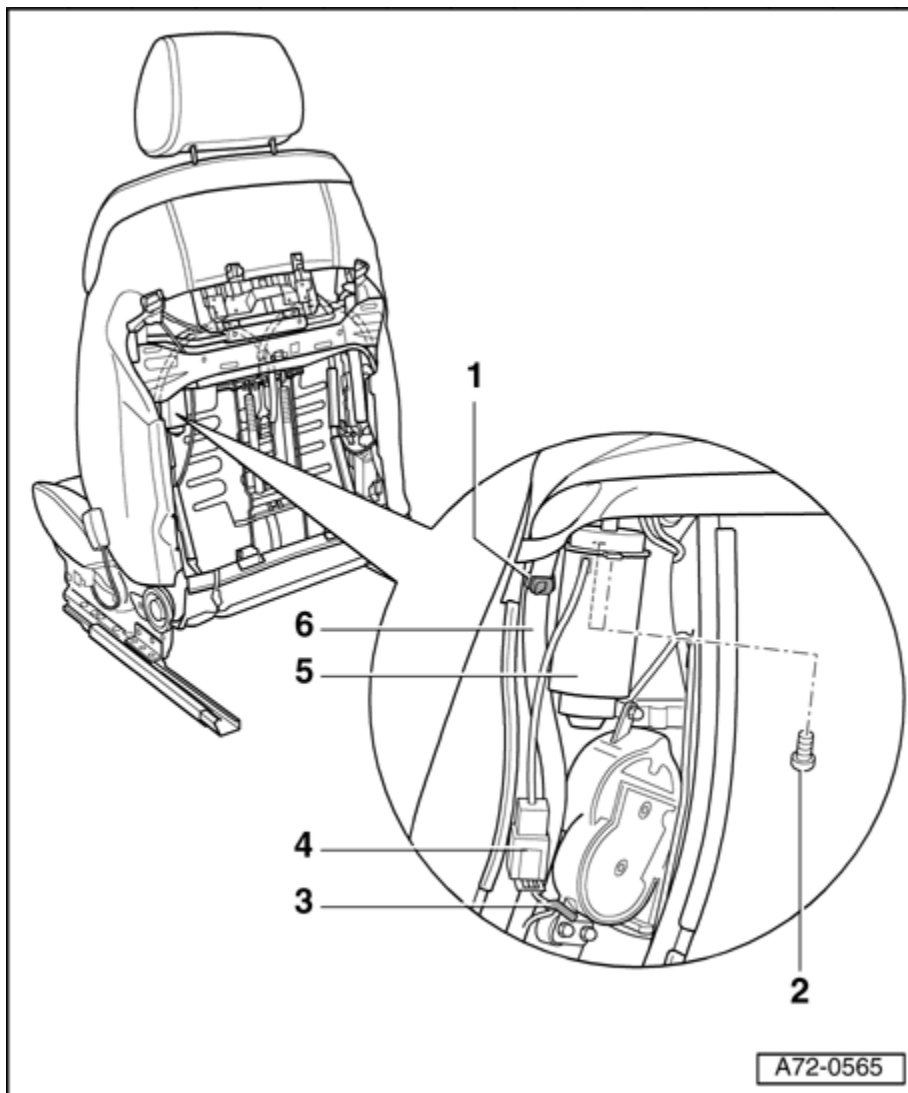
- Remove front trim ⇒ [Front Trim](#) .
- Remove bracket for seat side panels ⇒ [Seat Side Trim Bracket](#) .
- Remove the backrest ⇒ [Front Backrest](#) .
- Remove top backrest cover ⇒ [Upper Backrest Cover](#) .
- Remove bottom backrest cover ⇒ [Lower Backrest Cover](#) .
- Remove headrest guides ⇒ [Headrest Guides, Comfort Seat](#) .
- Remove cover and padding from backrest ⇒ [Front Seat Cushion and Upholstery, Power Memory Seats](#) .
- Remove connector - **3** - .
- Disengage cable harness from holding plate with headrest adjustment motor - **2** - .
- Drill out rivets - **4** - (Qty. 2).
- Slide out retaining plate with headrest adjustment motor - **2** - upward from brackets - **1** - (Qty. 2).
- Replace holding plate with headrest adjustment motor - **2** - .
- ♦ Installing
- Install holding plate with headrest adjustment motor - **2** - in reverse order of removal.

### **3 - Connector**

### **4 - Rivets (Qty. 2)**

.

## **Upper Backrest Adjustment Motor**



**1 - Cable tie**

**2 - Screws, (Qty. 2)**

**3 - Cable tie**

**4 - Connector**

**5 - Upper backrest adjustment motor**

♦ Removing

– Remove seat ⇒ [Seat](#) .

– Mount the fixture for seat repair VAS 6136 on the engine and transmission holder VAS 6095 .

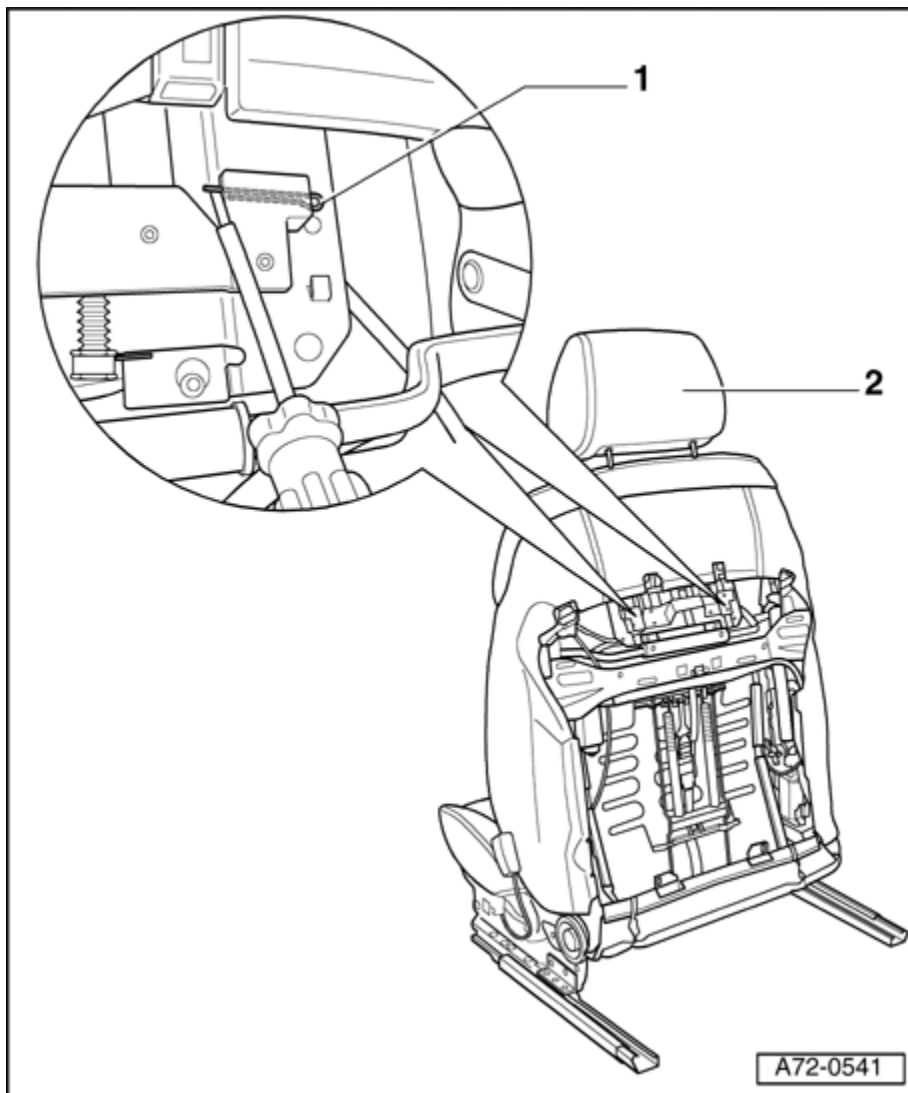
– Attach the front seat to the fixture for seat repair VAS 6136 .

- Remove top backrest cover ⇒ [Upper Backrest Cover](#) .
- Remove bottom backrest cover ⇒ [Lower Backrest Cover](#) .
- Open cable tie - **3** - .
- Remove connector - **4** - .
- Unclip cable tie - **1** - from backrest frame.
- Pull cable harness - **6** - aside.
- Remove bolts - **2** - (Qty. 2).
- Remove upper backrest adjustment motor - **5** - downward.
- ♦ Installing
- Install upper headrest adjustment motor - **5** - in reverse order of removal.

## **6 - Cable harness**

.

## **Power Headrest**



### 1 - Clamps (Qty. 2)

### 2 - Headrest

#### ♦ Removing

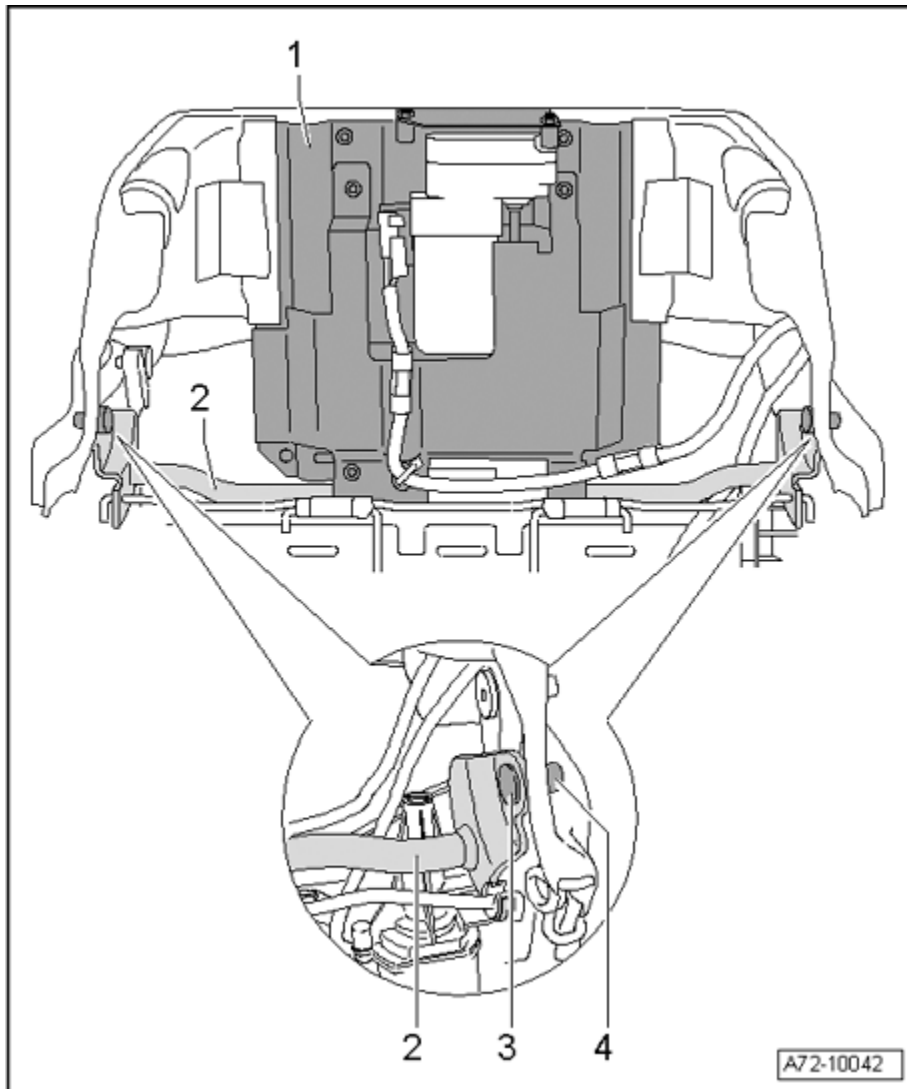
- Remove top backrest cover ⇒ [Upper Backrest Cover](#) .
- Remove bottom backrest cover ⇒ [Lower Backrest Cover](#) .
- Pull the clips - **1** - (Qty. 2) on the open side back using a screwdriver.
- Move the backrest back.
- Pull out headrest - **2** - upward.

#### ♦ Installing



- Install headrest - **2** - in reverse order of removal.
- Electric headrests with memory: To readapt the headrest stop positions, drive headrest once completely downward and upward.

## Headrest Adjustment Motor with Active Headrest Unit



### 1 - Headrest adjustment motor with active headrest unit

- Remove seat ⇒ [Seat](#) .
- Mount the fixture for seat repair VAS 6136 on the engine and transmission holder VAS 6095 .

- Attach the front seat to the fixture for seat repair VAS 6136 .
- Remove top backrest cover ⇒ [Upper Backrest Cover](#) .
- Remove bottom backrest cover ⇒ [Lower Backrest Cover](#) .
- Remove backrest upholstery ⇒ [Front Seat Cushion and Upholstery, Power Memory Seats](#) .
- Using a drill, remove rivet - **3** - and spacer sleeve - **4** - on left and right sides.
- Disconnect harness connectors and wire on headrest adjustment motor - **1** - .
- Pull out headrest adjustment motor with active headrest unit - **1** - and shaft - **2** - downward.

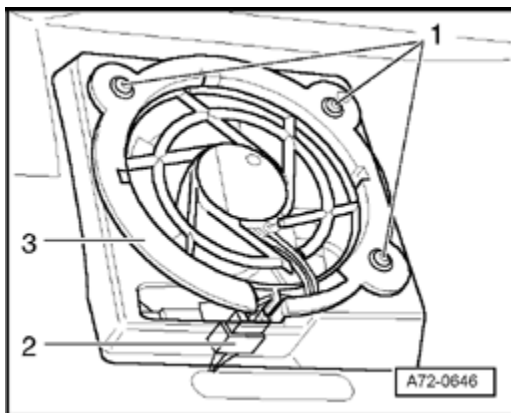
## **2 - Shaft for active headrest unit**

## **3 - Rivet**

## **4 - Spacer sleeve**

.

## **Seat Pan Ventilation**



## **Removing**

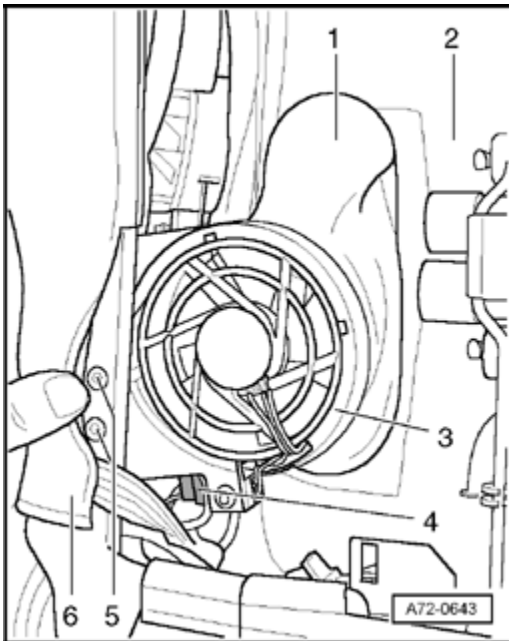
- Remove seat ⇒ [Seat](#) .
- Mount the fixture for seat repair VAS 6136 on the engine and transmission holder VAS 6095 .
- Attach the front seat to the fixture for seat repair VAS 6136 .

- Remove connector - **2** - .
- Remove bolts - **1** - (Qty. 3). 0.5 Nm.
- Remove seat ventilation - **3** - .

### Installing

- Install seat ventilation - **3** - in reverse order of removal.
- .

### Backrest Ventilation



### Note:

- ♦ Rubber guide - **1** - is sewn onto upholstery - **2** - . If rubber guide is malfunctioning, the upholstery must be replaced.

### Removing

- Remove seat ⇒ [Seat](#) .
- Mount the fixture for seat repair VAS 6136 on the engine and transmission holder VAS 6095 .
- Attach the front seat to the fixture for seat repair VAS 6136 .

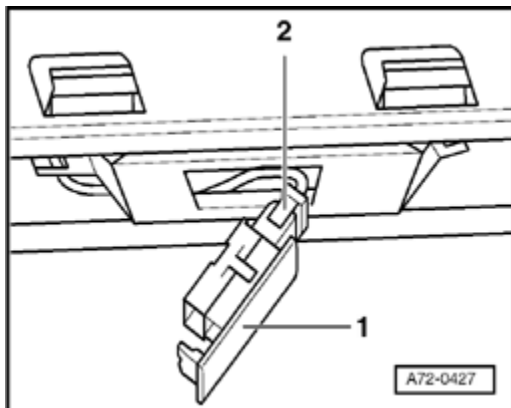
- Remove top backrest cover ⇒ [Upper Backrest Cover](#) .
- Remove bottom backrest cover ⇒ [Lower Backrest Cover](#) .
- Remove connector - **4** - .
- Push cover - **6** - aside.
- Drill out rivets - **5** - (Qty. 2).
- Remove seat ventilation - **3** - .

### Installing

- Install seat ventilation - **3** - in reverse order of removal.

.

### Rear Footwell Lighting



- Press out rear footwell light - **1** - from rear.
- Remove connector - **2** - .

.

### Power Front Seat Wiring

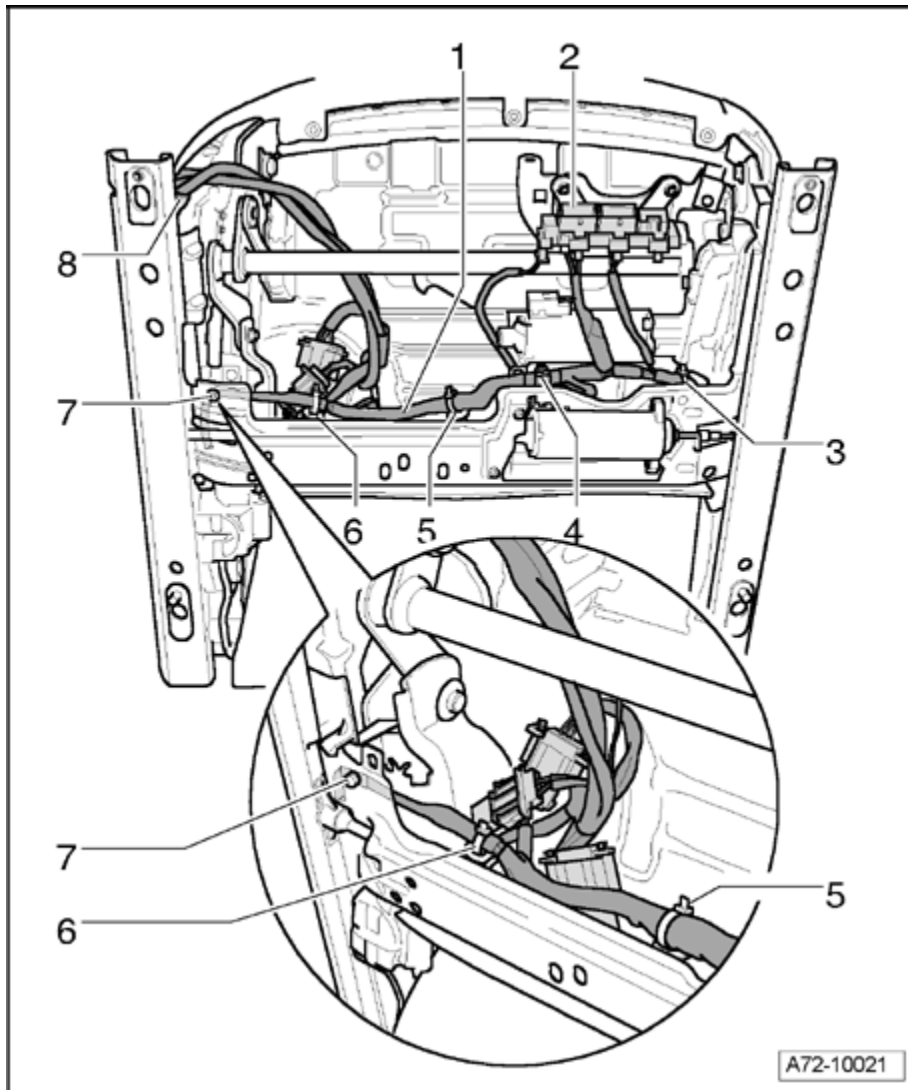
#### Standard Seat Wiring

#### Note:

- ♦ *Front passengers seat is depicted, drivers seat is arranged symmetrically.*

- ♦ Cable routing and wiring mounts on seat must be performed according to the illustration to prevent damage to the cable harness.

### Wiring on right side



**1 - Cable harness**

**2 - Connector strip**

**3 - Locating clip**

- ♦ Locating clip - **3** - must always be inserted from below.

- ♦ In the event the locating clip - **3** - is missing it must be installed otherwise the cable may wear through on the seat frame.

**4 - Spiral clip**

**5 - Locating clip**

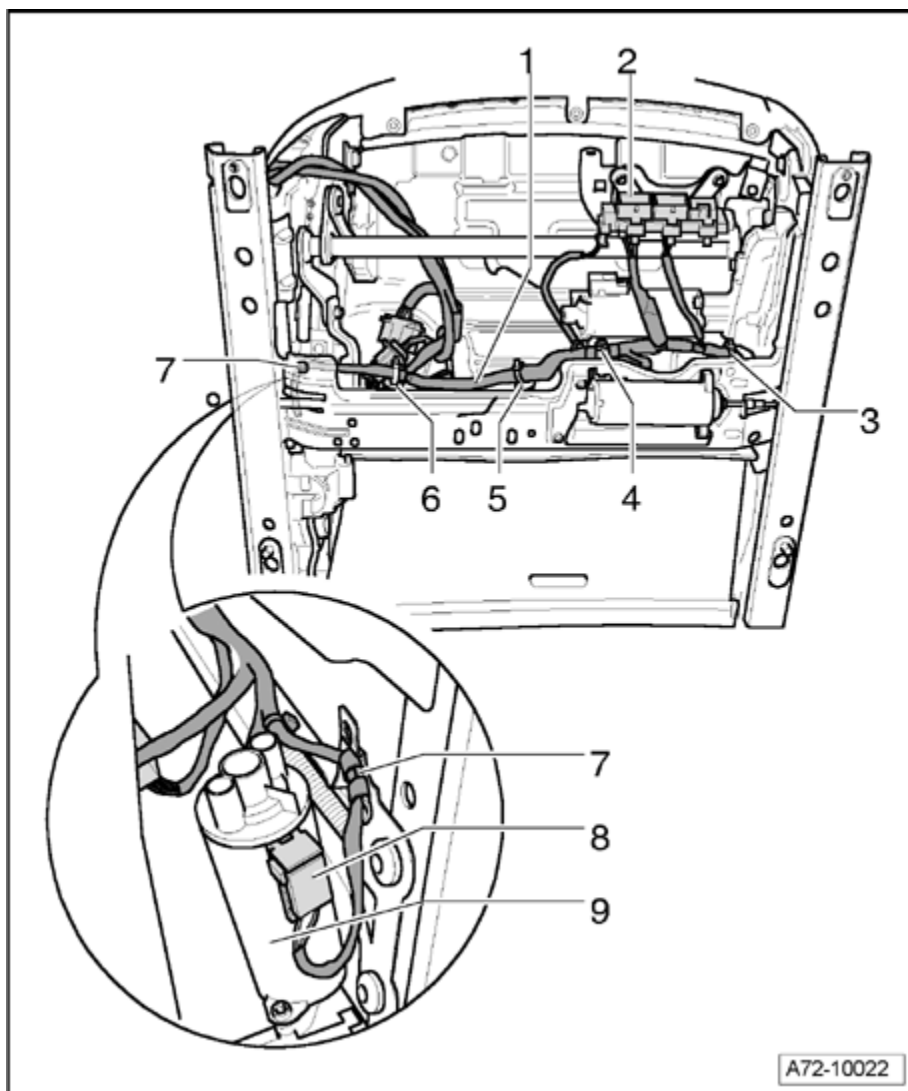
- ♦ For mounting on center crossmember

**6 - Locating clip**

- ♦ For mounting on outer crossmember

**7 - Locating clip****8 - Locating clip****Wiring on right side from outside****Note:**

- ♦ *Magnified area shows the view from the side*



**1 - Cable harness****2 - Connector strip****3 - Locating clip**

- ♦ Locating clip - **3** - must always be inserted from below.
- ♦ In the event the locating clip - **3** - is missing it must be installed otherwise the cable may wear through on the seat frame.

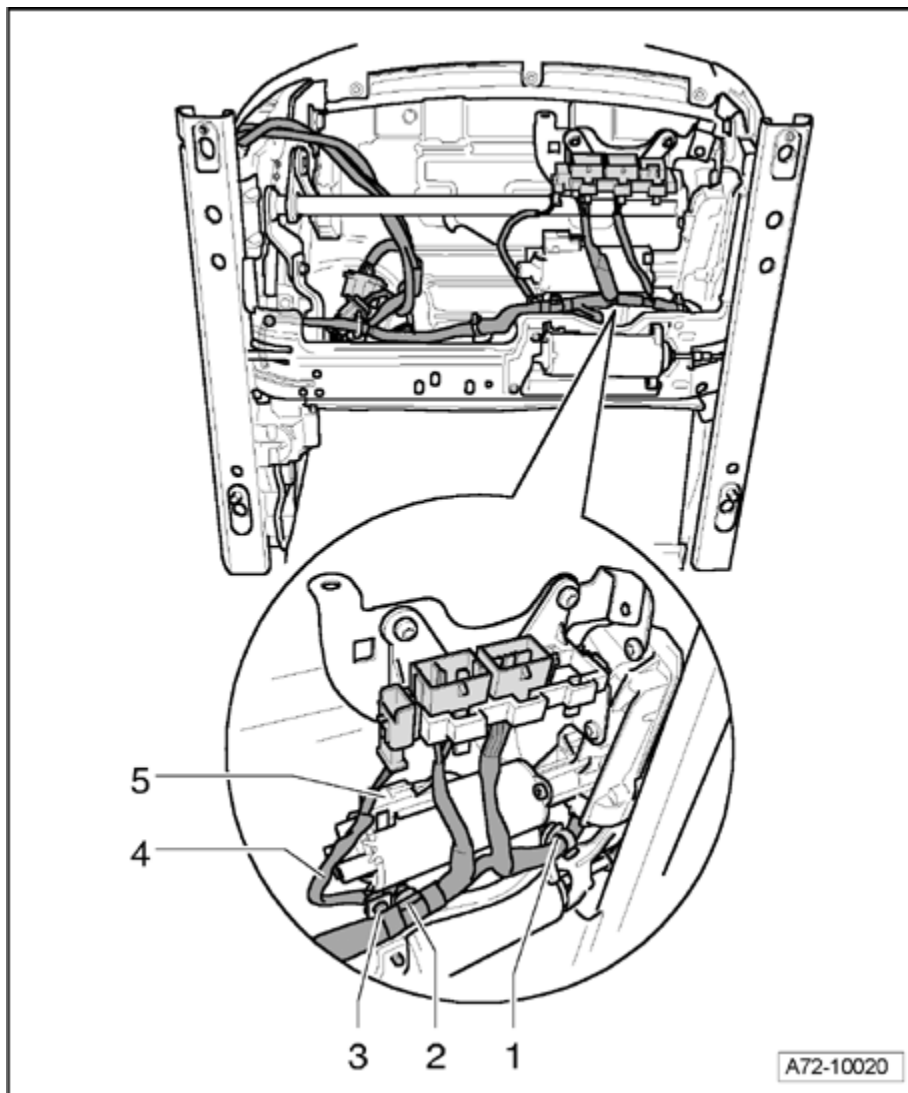
**4 - Spiral clip****5 - Locating clip**

- ♦ For mounting on center crossmember

**6 - Locating clip**

- ♦ For mounting on outer crossmember

**7 - Locating clip for wiring of seat height adjustment motor****8 - Harness connector of seat height adjustment motor****9 - Seat height adjustment motor****Wiring on connector strip**



**1 - Locating clip**

**2 - Spiral clip**

**3 - Locating clip of airbag wire**

**4 - Airbag cable**

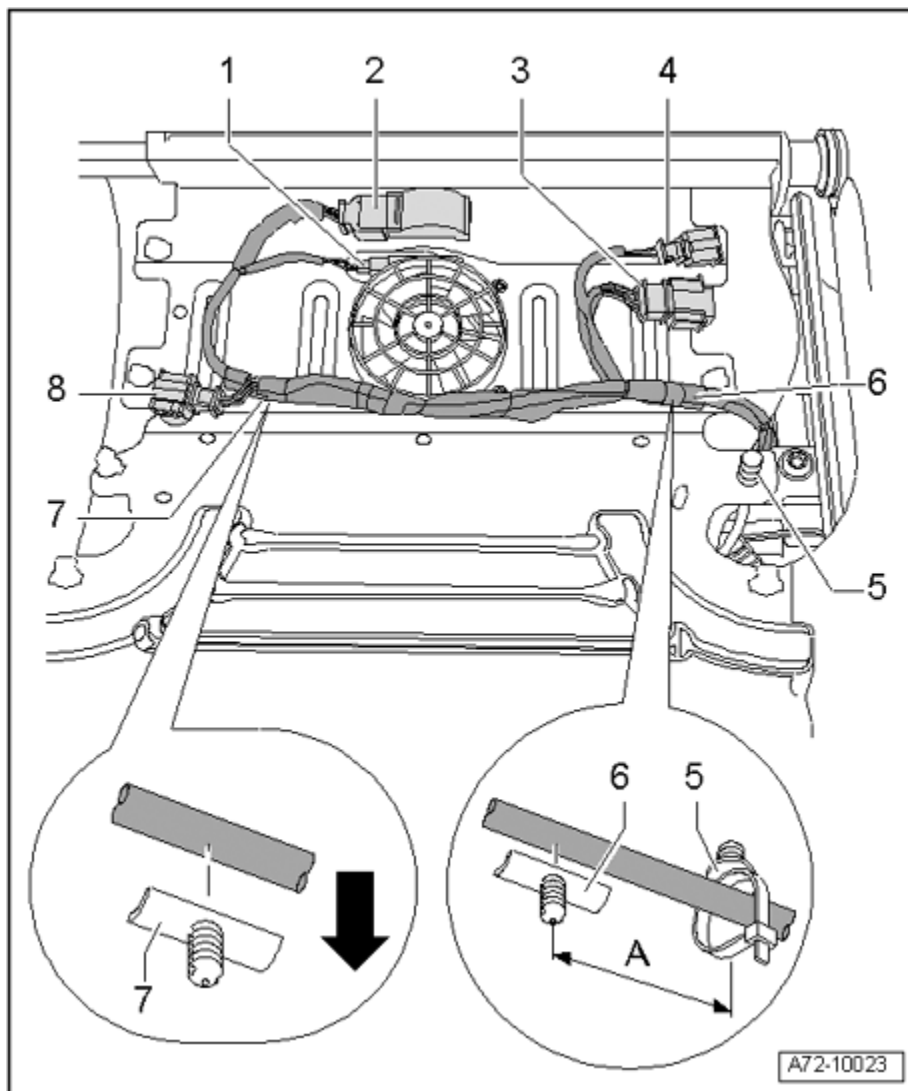
**5 - Seat angle adjustment motor connector**

**Top seat pan wiring**

**Note:**

♦ *Depicted without cover and upholstery in the illustration.*





**1 - Seat ventilator harness connector (3-pin)**

**2 - Harness connector for rear footwell light**

**3 - Harness connector (8-pin) to backrest**

**4 - Harness connector (2-pin) to backrest heater**

**5 - Locating clip**

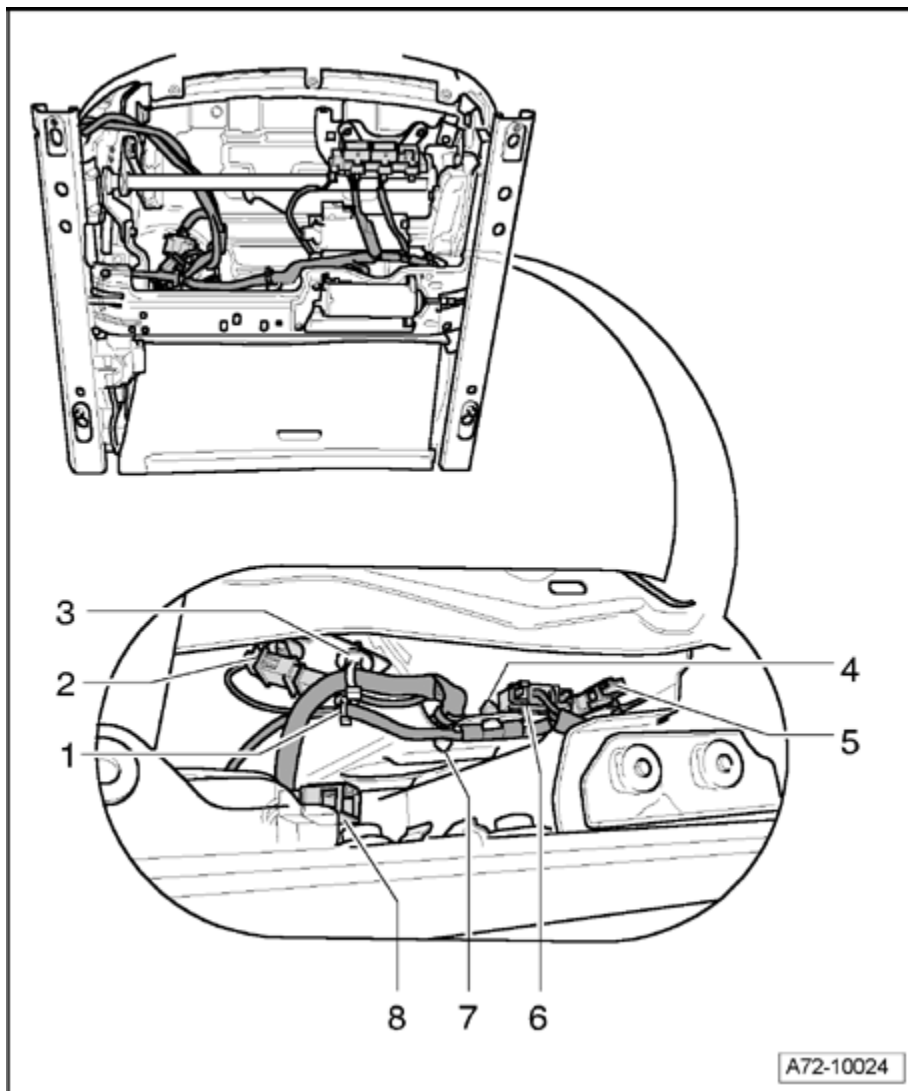
- ♦ Locating clip - 5 - must always be inserted from below.
- ♦ In the event the locating clip - 5 - is missing it must be installed otherwise the cable may wear through on the seat frame.
- ♦ A missing securing clip - 5 - must be installed 80 mm (dimension - A - ) from the center spiral clip - 6 - .

**Note:**

- ♦ *On new seat wiring, locating clip - 5 - must be the first to be inserted.*

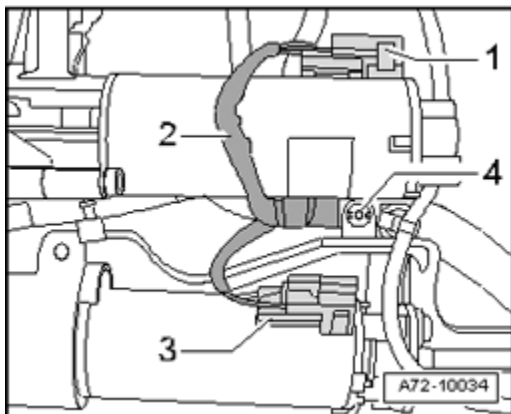
**6 - Left spiral clips****7 - Right spiral clips****8 - Harness connector (2-pin) to seat heater****Wiring on left side from outside****Note:**

- ♦ *Magnified area shows the view from the side*

**1 - Locating clip**

**2 - Harness connector (1-pin) for airbag Ground (GND)****3 - Locating clip**

- ♦ Locating clip - **3** - must always be inserted from below.
- ♦ In the event the locating clip - **3** - is missing it must be installed otherwise the cable may wear through on the seat frame.

**4 - Spiral clip****5 - Harness connector (2-pin) to backrest heater****6 - Harness connector (8-pin) to backrest****7 - Spiral clip****8 - Harness connector for belt buckle****Wiring for seat pan motors**

1 - Seat angle adjustment motor connector

2 - Seat angle adjustment motor wiring

- ♦ The wire - **2** - must be routed above the seat angle adjustment motor.
- ♦ Wire - **2** - is the longer wire.

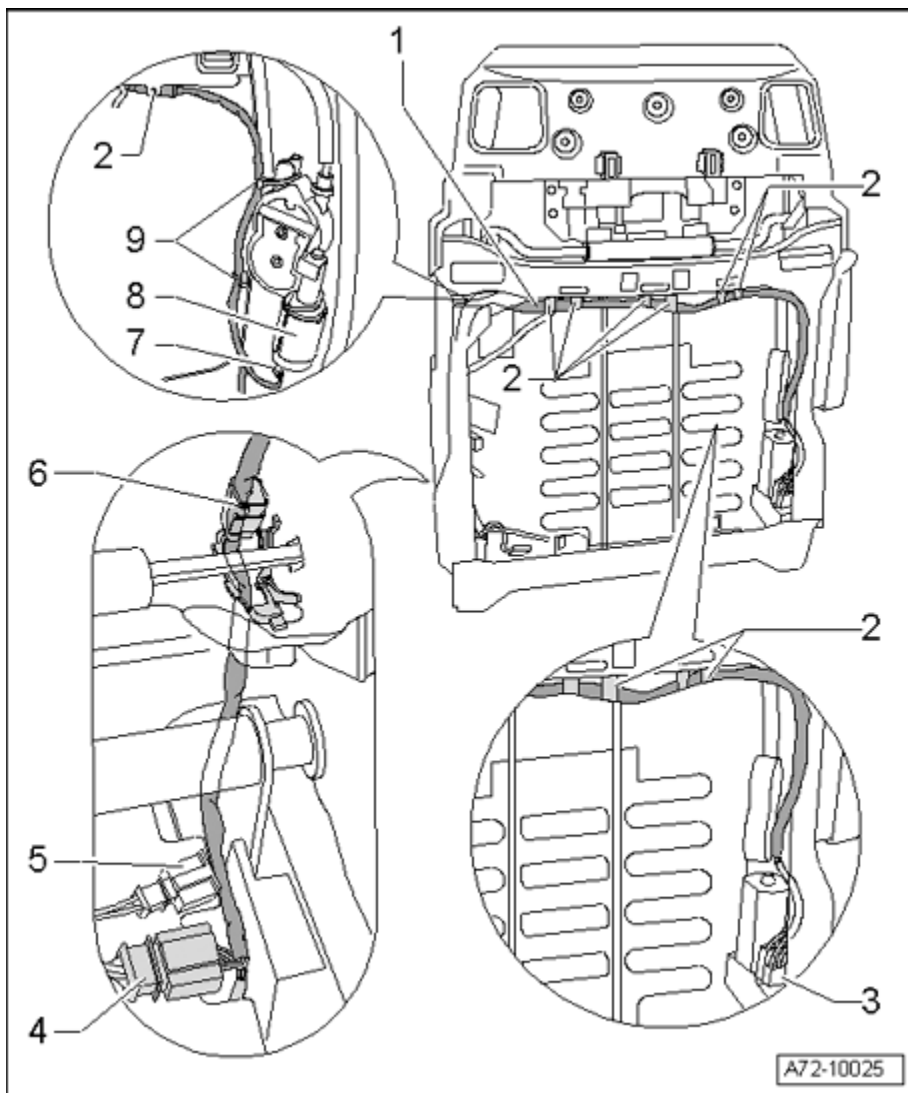
3 - Seat forward/back adjustment motor connector

4 - Spiral clip

**Backrest wiring**

**Note:**

♦ Top magnified area depicts view from the front.



**1 - Backrest cable harness**

**2 - Locating clip (Qty. 6)**

**3 - Harness connector for backrest adjustment motor**

**4 - Harness connector (8-pin) to backrest**

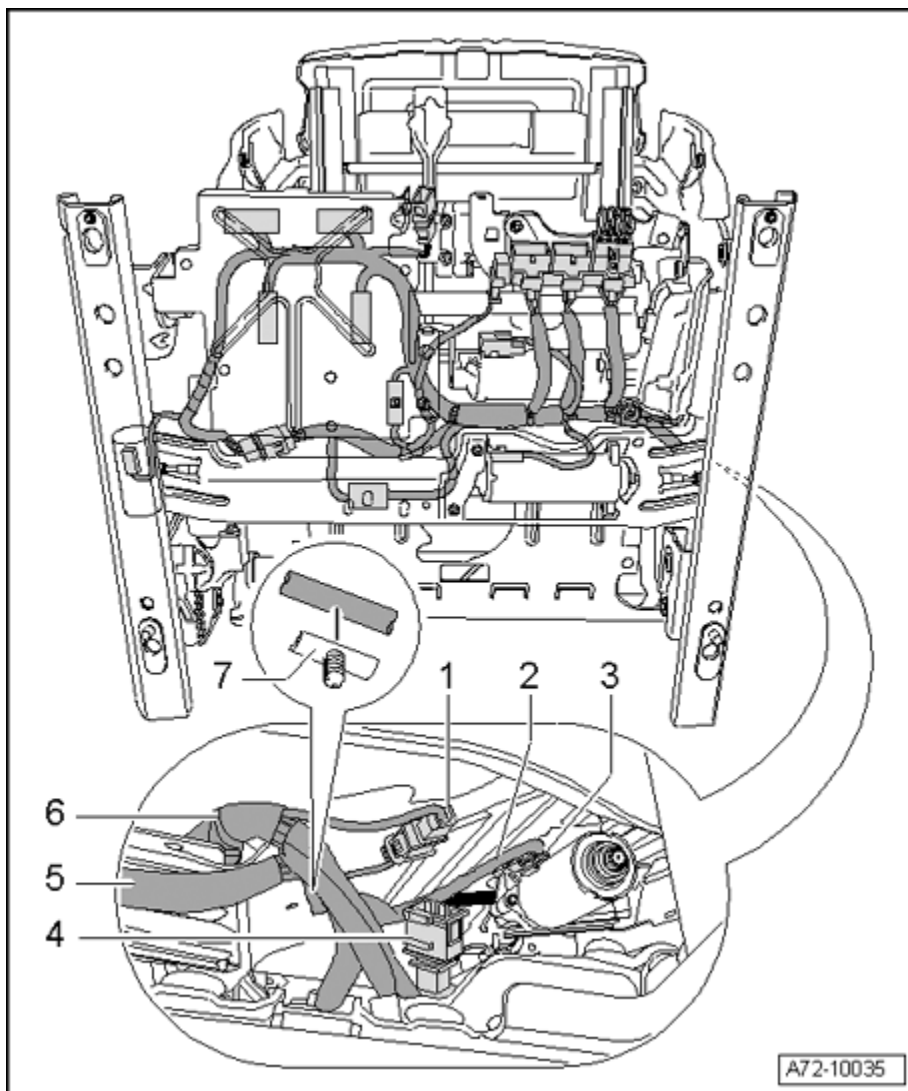
**5 - Harness connector (2-pin) to backrest heater**

**6 - Cable guide**

**7 - Harness connector for lumbar height motor**

**8 - Lumbar height motor****9 - Cable ties (Qty. 2)****Comfort Seat Wiring****Note:**

- ♦ *Front passengers seat is depicted, drivers seat is arranged symmetrically.*
- ♦ *Cable routing and wiring mounts on seat must be performed according to the illustration to prevent damage to the cable harness.*

**Wiring on left side****1 - Harness connector (1-pin) for airbag Ground (GND)**

**2 - Wire to seat depth adjustment motor**

**3 - Harness connector on seat depth adjustment motor**

**4 - Harness connector to belt buckle**

**5 - Backrest cable harness**

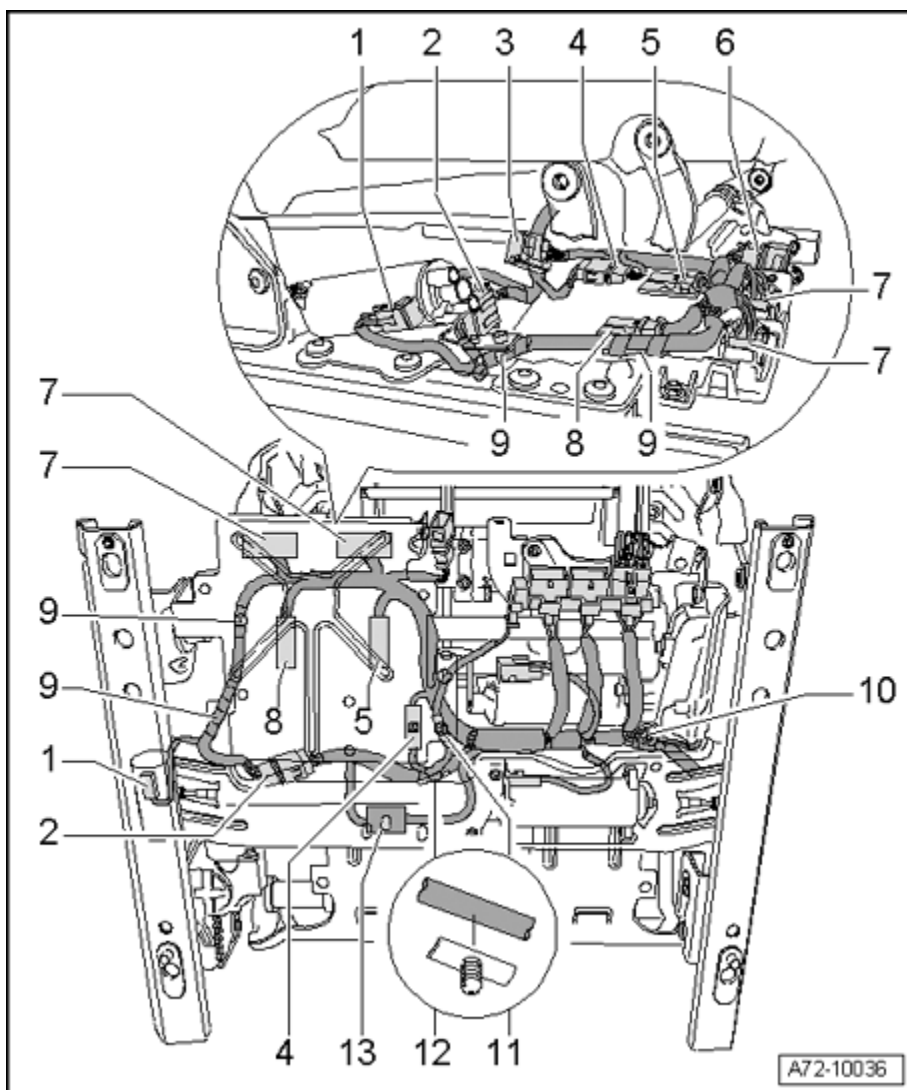
**6 - Seat cable harness**

**7 - Spiral clip**

**Wiring on right side from outside (memory control module)**

**Note:**

♦ *Magnified area shows the view from the side*



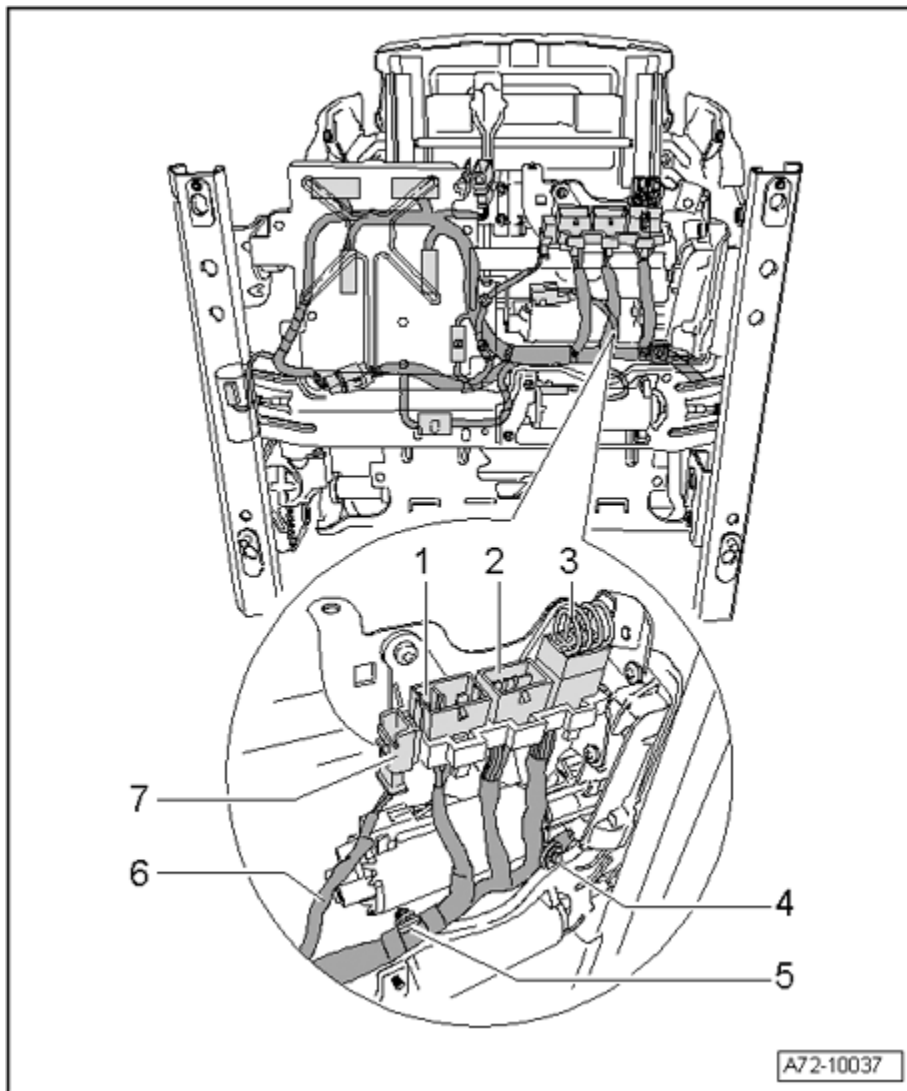
- 1 - Harness connector at seat height adjustment motor**
- 2 - Seat to backrest interface (12-pin, power connector)**
- 3 - Harness connector (12-pin; brown) to seat heater control module**
- 4 - Seat to backrest interface (12-pin, signal connector)**
- 5 - Harness connector (32-pin; blue; signal connector) to memory control module**
- 6 - Harness connector (12-pin) to switch unit on seat panel**
- 7 - Harness connector (12-pin; power connector; Qty. 2) to memory control module**
- 8 - Harness connector (32-pin; gray; signal connector) to memory control module**
- 9 - Spiral clip**
- 10 - Locating clip**

**Note:**

♦ *Must be inserted from above!*

- 11 - Spiral clip for side airbag wire**
- 12 - Spiral clip for backrest cable harness**
- 13 - Backrest heating connector**

**Wiring on connector strip**



**1 - Seat to body interface (17-pin, brown)**

**2 - Seat to body interface (17-pin, gray)**

**3 - Bridge for emergency power supply**

♦ For seat height adjustment and seat forward/back adjustment

**4 - Locating clip**

**Note:**

♦ *Must be inserted from above!*

**5 - Spiral clip**

**Note:**



♦ *Must be inserted from below!*

## 6 - Cable to side airbag

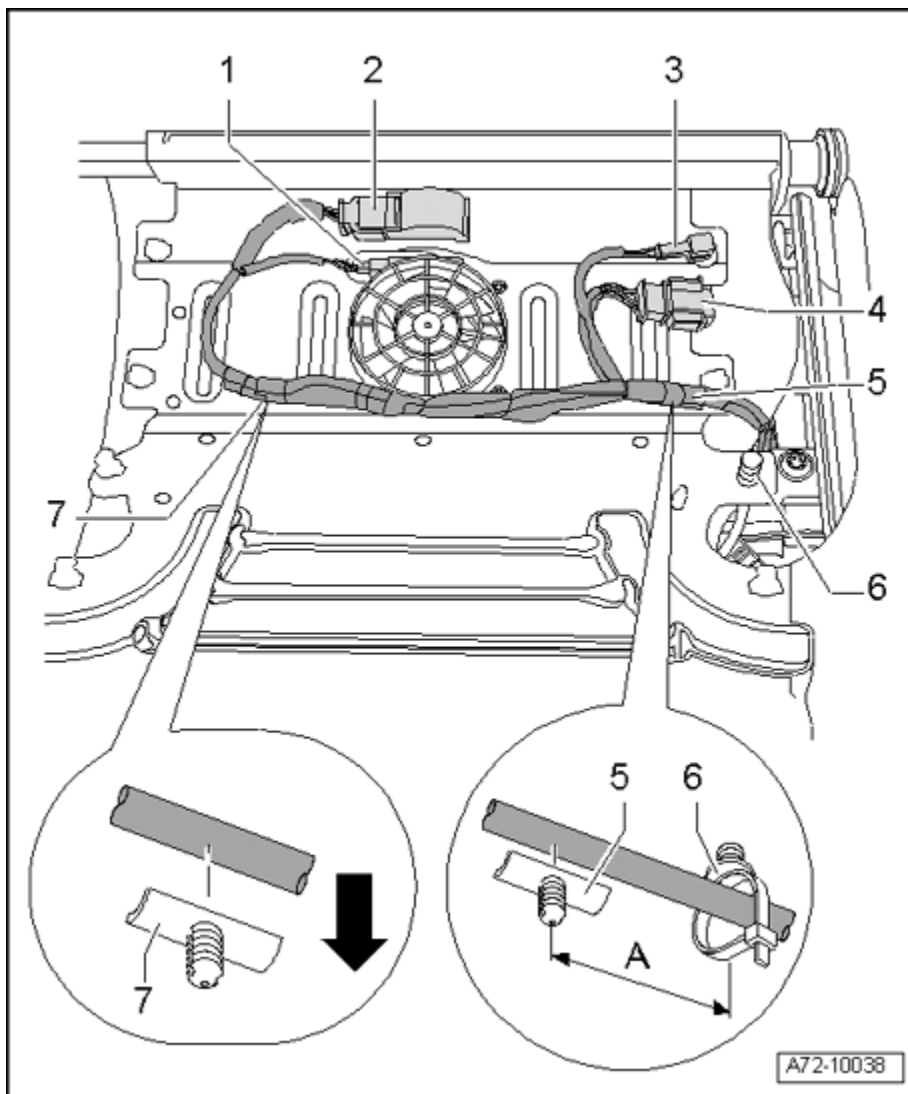
♦ Separate wire does not belong to the seat cable harness

## 7 - Harness connector for side airbag wire

### Top seat pan wiring

#### Note:

♦ *Depicted without cover and upholstery in the illustration.*



1 - Seat ventilator harness connector (3-pin)

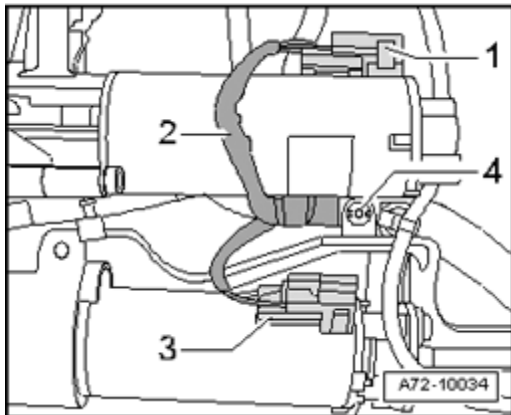
2 - Harness connector for rear footwell light

**3 - Harness connector (2-pin) to passenger occupant detection system****4 - Harness connector (8-pin) to seat heater****5 - Left spiral clip****6 - Locating clip**

- ♦ Locating clip - **6** - must always be inserted from below.
- ♦ In the event the locating clip - **6** - is missing it must be installed otherwise the cable may wear through on the seat frame.
- ♦ A missing securing clip - **6** - must be installed 80 mm (dimension - **A** - ) from the center spiral clip - **5** - .

**Note:**

- ♦ *On new seat wiring, locating clip - **6** - must be the first to be inserted.*

**7 - Right spiral clip****Wiring for seat pan motors**

1 - Seat angle adjustment motor connector

2 - Seat angle adjustment motor wiring

- ♦ The wire - **2** - must be routed above the seat angle adjustment motor.
- ♦ Wire - **2** - is the longer wire.

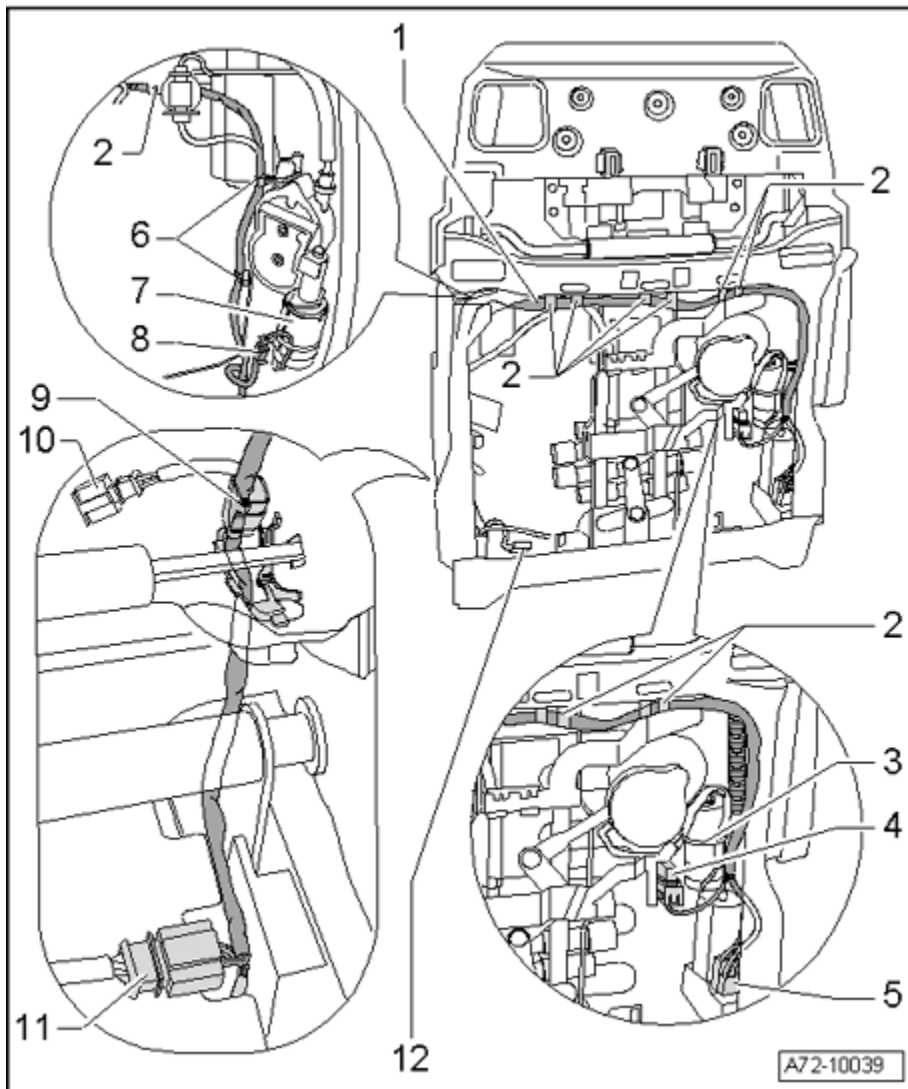
3 - Seat forward/back adjustment motor connector

4 - Spiral clip

## Backrest wiring

### Note:

♦ Top magnified area depicts view from the front.



**1 - Backrest cable harness**

**2 - Locating clip (Qty. 6)**

**3 - Massage function motor**

**4 - Harness connector for massage function motor**

**5 - Harness connector for backrest adjustment motor**

**6 - Cable ties for wire fasteners (Qty. 2)**

**7 - Harness connector for lumbar height motor**

**8 - Lumbar height motor**

**9 - Cable guide**

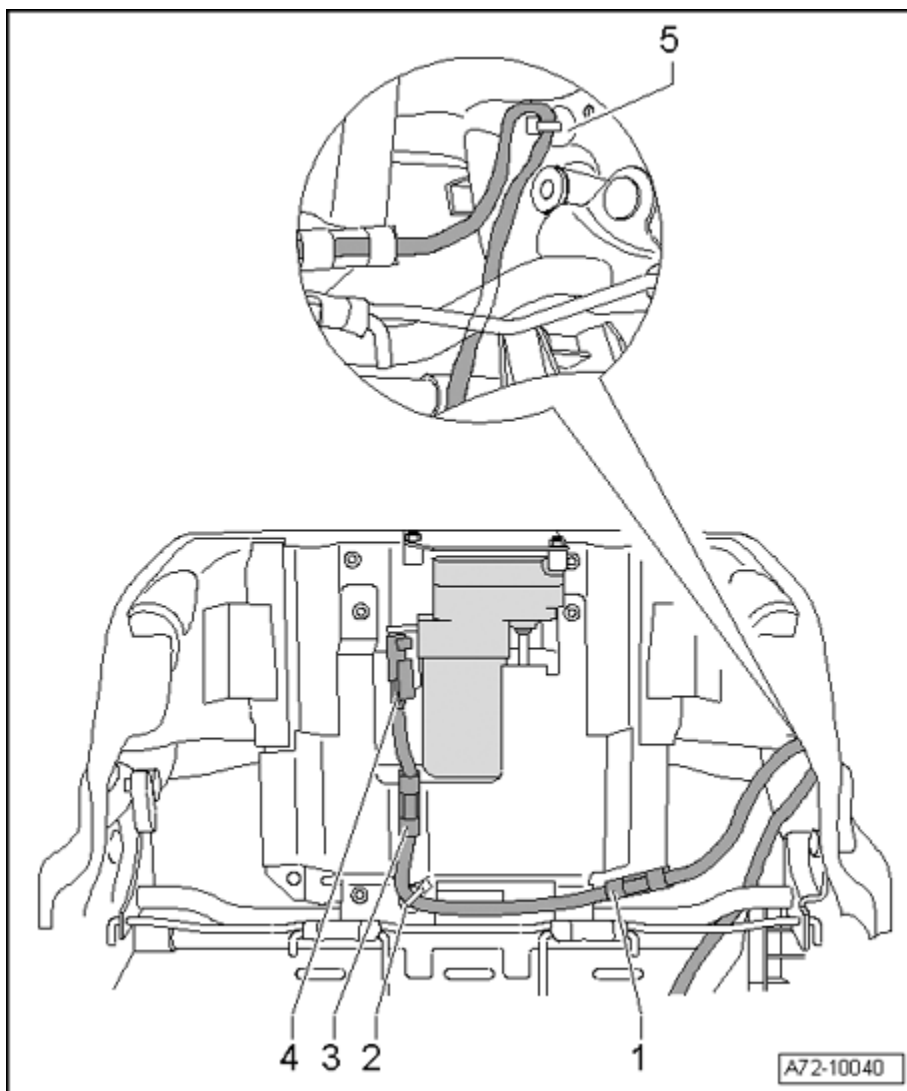
♦ Wire must be routed through cable guide - 7 - and behind backrest adjustment shaft.

**10 - Harness connector (2-pin) to backrest heater**

**11 - Harness connector (8-pin) to seat heater**

**12 - Harness connector (3-pin) to backrest ventilator**

**Headrest motor wiring**



**1 - Spiral clip**

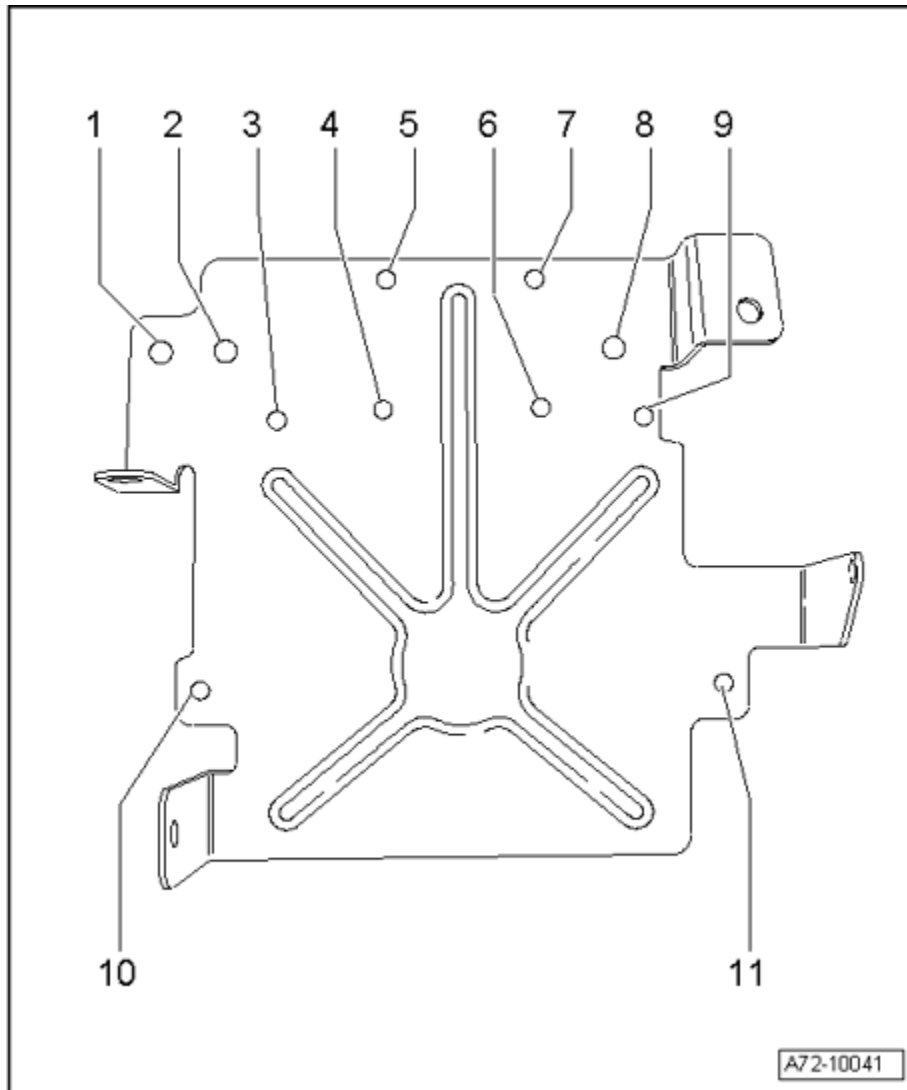
**2 - Locating clip**

**3 - Spiral clip**

**4 - Harness connector to headrest adjustment motor**

**5 - Locating clip**

**Mounting points on retaining plate for memory control module**



**1 - Mounting point for side airbag**

**2 - Mounting point for harness connector to right seat backrest**

**3 - Mounting point for seat ventilation control module of left seat**

**4 - Mounting point for memory control module**

- 5 - Mounting point for seat ventilation control module of right seat**
- 6 - Mounting point for memory control module of left seat**
- 7 - Mounting point for seat ventilation control module of left seat**
- 8 - Mounting point for harness connector to left seat backrest**
- 9 - Mounting point for seat ventilation control module of right seat**
- 10 - Mounting point for memory control module of left and right seat**
- 11 - Mounting point for memory control module of left and right seat**

*Copyright © 2008 Audi of America, Inc. and Bentley Publishers. All rights reserved. Last processed:*